

# MILLET®



Spring Summer 2027

# MILLET®

## CONTENTS

---

22	TRILOGY	28	MILLET	54	EQUIPMENT
23	MEN'S APPAREL	29	MEN'S APPAREL	55	BACKPACKS
25	WOMEN'S APPAREL	41	WOMEN'S APPAREL	64	SLEEPING BAGS
26	BACKPACKS	50	HEADWEAR	67	FOOTWEAR
27	SLEEPING BAGS	53	GLOVES	68	CLIMBING SHOES
27	FOOTWEAR	53	SOCKS	70	ACCESSORIES



**OUT OF LOVE FOR THE MOUNTAINS, MILLET BUILDS A SENSE OF FAMILY WITH ITS COMMUNITIES BY GUIDING THEM TOWARD UPLIFTING ADVENTURES AND TAKES ACTION TO PRESERVE THESE SPACES OF FREEDOM.**

This «raison d'être» has guided us every day for over 100 years, ever since Hermance and Marc founded the company. In a world undergoing profound transformation -demographic, climatic, political, and economic-, it shapes and supports each of our actions, enabling everyone to live their dream in the mountains for the next 100 years.

Millet embodies a closeness to nature, to life, and a sincere connection to the mountains.

It is a social bond, bringing women and men together, like rope teams of mountaineers rising as one.GERIM

It is, finally, a conviction: the mountains make us happy.

As such, Chamonix, a unique place in the world that lives to the rhythm of the mountains all year round, remains our historical anchor and our open-air laboratory.

In 2027, the brand is accelerating, adapting, and expanding its reach.

**Acceleration:** we are strengthening our ties with mountain lovers by expanding our presence in Europe, as well as in the U.S., South America, and Asia, illustrated by the recent opening of stores in Tokyo, Seoul, and Chengdu.

**Adaptation:** in response to climate change and evolving practices, we are evolving our product offerings. Our Trilogy range, a reflection of our alpine DNA, is being renewed with new *Big Wall* and *Expedition* products. Our services are expanding to extend the lifespan of our products. Finally, trail running and adventure, both experiencing strong global growth, are receiving special focus through our Intense franchise.

**Accessibility:** to better guide our communities, we are expanding our product lines, particularly those dedicated to women and travelers. Our best-sellers retain the functional features that made them successful, while enhancing their emotional appeal.

**PAR AMOUR DE LA MONTAGNE, MILLET FAIT FAMILLE AVEC SES COMMUNAUTÉS EN LES GUIDANT VERS DES AVENTURES QUI LES ÉLÈVENT, ET AGIT POUR PRÉSERVER CES ESPACES DE LIBERTÉ.**

Cette **raison d'être** nous guide quotidiennement depuis plus de 100 ans, depuis la création de l'entreprise par Hermance et Marc. Dans un monde en profonde mutation - démographique, climatique, politique et économique -, elle oriente et soutient chacune de nos actions afin de permettre à toutes et tous de vivre un rêve en montagne, pour les 100 prochaines années.

Millet, c'est une proximité avec la nature, le vivant, et un rapport sincère à la montagne.

C'est un lien social, unissant femmes et hommes à l'image des cordées d'alpinistes qui s'élèvent ensemble.

C'est, enfin, une conviction : la montagne rend heureux.

A ce titre, Chamonix, lieu unique au monde qui bat au rythme de la montagne toute l'année, reste notre ancrage historique et notre laboratoire à ciel ouvert.

En 2027, la marque accélère, s'adapte et renforce son accessibilité.

**Accélération :** nous consolidons nos liens avec les amoureux de la montagne, en développant notre présence en Europe, mais aussi aux USA, en Amérique du Sud et en Asie, à l'image des récentes ouvertures de magasins à Tokyo, Séoul et Chengdu.

**Adaptation :** face au dérèglement climatique et aux évolutions des pratiques, nous faisons évoluer notre offre. Notre Gamme Trilogy, reflet de notre ADN alpine, se renouvelle avec de nouveaux produits *Big Wall* et d'*Expedition*. Nos services s'élargissent, pour prolonger la durée de vie de nos produits notamment. Enfin, le trail et l'aventure, en plein essor mondial, bénéficient d'une attention particulière via notre franchise Intense.

**Accessibilité :** pour mieux guider nos communautés, nos gammes s'enrichissent, celles dédiées aux femmes et aux voyageurs notamment. Nos best-sellers conservent les spécificités fonctionnelles qui ont fait leur succès, tout en enrichissant leur dimension émotionnelle.

# MILLET STANDS FOR THE GLACIERS

MILLET S'ENGAGE POUR LES GLACIERS

MILLET IS A VOICE FOR THE GLACIERS. WITH A CENTURY OF HISTORY, A PASSION FOR SUMMITS, AND A COMMITMENT TO THEIR PRESERVATION.

MILLET SE FAIT LE PORTE-VOIX DES GLACIERS. PAR SON HISTOIRE CENTENAIRE, SA PASSION POUR LES SOMMETS, SES ENGAGEMENTS POUR LEUR PRÉSERVATION.

CONCRETE ACTIONS IN THREE AXES

CLIMATE  
PROTECTION  
RESEARCH AND AWARENESS



DES ACTIONS CONCRÈTES SUR TROIS AXES

CLIMAT  
PROTECTION  
RECHERCHE ET SENSIBILISATION



## CLIMATE

Millet is committed to cutting its carbon emissions by 90% and aligning its business model with the nine planetary boundaries by 2050.

Millet s'engage à réduire de 90% ses émissions carbone et ajuster son modèle économique sur les neuf limites planétaires d'ici 2050.

## PROTECTION

Millet supports initiatives aimed at filling this legal void, ensuring that both existing glaciers and post-glacial ecosystems are protected from future human activities that may threaten them.

Millet soutient les initiatives qui visent à combler ce vide juridique, afin de préserver les glaciers existants et les écosystèmes post-glaciaires de futures activités humaines qui les menaceraient.

## RESEARCH AND AWARENESS

Millet is committed to supporting scientific research and using its influence to amplify the voice of the glaciers within its communities.

Millet s'engage à soutenir la recherche scientifique et se fait le porte-voix des glaciers en utilisant son influence et sa visibilité auprès de ses communautés.

## ENDOWMENT FUND "MILLET FOR GLACIERS"

WITH THE OFFICIAL CREATION OF AN ENDOWMENT FUND, MILLET IS EXTENDING ITS COMMITMENT TO CORPORATE PHILANTHROPY.

## FOND DE DOTATION « MILLET POUR LES GLACIERS »

EN CRÉANT OFFICIELLEMENT UN FONDS DE DOTATION, MILLET PROLONGE SES ENGAGEMENTS EN METTANT EN PLACE DES ACTIONS DE MÉCÉNAT.

# MILLET STANDS FOR LIFE EXTENSION

MILLET S'ENGAGE POUR LA DURABILITÉ

## ARE WE REALLY MAKING THE MOST OF THE PRODUCTS WE PUT ON THE MARKET?

Today, we wear on average only 30% of the clothes in our wardrobes, a figure that raises questions given the impact of every item produced. Our ambition is clear: to ensure our products are used and worn for as long as possible. We want them to last, to accompany their users, to be passed on, and then transformed so they can continue to serve in new ways.

Our strength: our repair workshop in Annecy, capable of bringing even the most technical products back to life, with a level of quality that meets the demands of the mountains.

REPAIRING MEANS EXTENDING. AND EXTENDING ALREADY MEANS REDUCING OUR IMPACT.

## EXPLOITONS-NOUS RÉELLEMENT LE POTENTIEL DES PRODUITS QUE NOUS METTONS SUR LE MARCHÉ ?

Aujourd'hui, nous ne portons en moyenne que 30 % des vêtements présents dans nos armoires. Un chiffre qui interroge au regard de l'impact de chaque pièce produite. Notre ambition est claire : prolonger la vie de nos produits pour qu'ils soient portés au maximum. Nous voulons qu'ils durent, qu'ils accompagnent, qu'ils se transmettent,

puis se transforment pour continuer à accompagner autrement. Notre force : notre atelier de réparation à Annecy, capable de redonner vie aux produits les plus techniques, avec un niveau de qualité à la hauteur des exigences de la montagne.

RÉPARER, C'EST PROLONGER. ET PROLONGER, C'EST DÉJÀ RÉDUIRE NOTRE IMPACT.



## LOCAL CUSTOMER SERVICE BASED IN OUR ANNECY BASECAMP

We prioritize repairs and proceed with exchanges only when the product cannot be repaired.

SCAN YOUR REQUEST FORM



FRENCH



ENGLISH



GERMAN



ITALIAN



SPANISH

PRODUCTS ARE REPAIRED WITHIN A MAXIMUM OF 6 WEEKS.

*In case of exchange, shipping is done within one business day.*

## SAV DE PROXIMITÉ DANS NOS LOCAUX À ANNECY

Nous privilégions les réparations et réalisons un échange lorsque le produit n'est pas réparable.

SCANNEZ VOTRE FORMULAIRE DE DEMANDE

LES PRODUITS SONT RÉPARÉS SOUS UN DÉLAI DE 6 SEMAINES MAXIMUM.

*En cas d'échange, expédition sous un jour ouvré.*

Phone: +33 (0)4 85 44 00 08

Monday to Friday, 9 a.m. to 12 p.m. and 2 p.m. to 5 p.m. Du lundi au vendredi de 9h à 12h et de 14 à 17h

# MILLET STANDS FOR CIRCULARITY

MILLET S'ENGAGE POUR L'ÉCONOMIE CIRCULAIRE

## TODAY, WE ARE FACING AN UNCERTAIN REALITY: OUR DEPENDENCE ON OIL.

Today, we are facing an uncertain reality: our dependence on oil. 85% of our products are made from synthetic fibers (polyester, polyamide, elastane, etc.) directly derived from this resource. Yet it is running out. And with it, the certainty around available volumes, costs, and environmental impacts. Like in the mountains when facing unstable weather, we must anticipate, adapt, and above all avoid relying on a single path.



## AUJOURD'HUI, NOUS FAISONS FACE À UNE RÉALITÉ INCERTAINE : NOTRE DÉPENDANCE AU PÉTROLE.

85% de nos produits sont conçus à partir de fibre synthétique (polyester, polyamide, élasthane, ...) directement issues de cette ressource. Or, elle s'épuise. Et avec elle, les certitudes sur les volumes disponibles, les coûts, et les impacts environnementaux. Comme en montagne face à une météo instable, nous devons anticiper, nous adapter, et surtout ne pas dépendre d'une seule voie.

## WHAT IF OUR FUTURE RESOURCE IS ALREADY IN OUR HANDS?

End-of-life garments represent a tremendous opportunity. That is why we are actively investing in research to transform these used products into the raw materials of tomorrow. This is the whole purpose of the SPIRAL project, launched in 2025.

A first concrete step has already been taken with the Chamonix fleece (FW26), as well as with the M WHITE jackets and trousers, paving the way for textile-to-textile recycling loops. The road is still long, but these products nevertheless demonstrate that change is possible.

## 56% OF THE SPIRAL FLEECE IS MADE FROM PRODUCTION OFFCUTS THAT WE HAVE RECYCLED.

## ET SI NOTRE FUTURE RESSOURCE ÉTAIT DÉJÀ ENTRE NOS MAINS ?

Les vêtements en fin de vie représentent une opportunité immense. C'est pourquoi nous investissons activement dans la recherche pour transformer ces produits usagés en matières premières de demain.

C'est tout l'enjeu du projet SPIRAL, lancé en 2025.

Une première étape concrète a déjà vu le jour avec la polaire Chamonix (FW26) mais aussi avec les vestes et pantalons M WHITE ouvrant la voie vers des boucles de recyclage du textile en textile. Le chemin est encore long mais ces produits prouvent néanmoins que le changement est possible.

## 56% DE LA POLAIRE SPIRALE EST FABRIQUÉE À PARTIR DES CHUTES DE CONFECTION QUE NOUS AVONS RECYCLÉES.



PRESS RELEASE SS26

ENGLISH



COMMUNIQUÉ DE PRESSE SS26

FRENCH

# **B2B SERVICES**

NOS SERVICES B2B

## **MEDIA CENTER MILLET CONTENT AT YOUR DISPOSAL**

- Product photos: pack shots and lifestyle images
- Source video files and YouTube links
- Marketing tools (logos, banners, size charts, etc.)

FOR ANY QUESTIONS, PLEASE CONTACT YOUR REPRESENTATIVE OR CUSTOMER SERVICE.

## **MEDIA CENTER LE CONTENU MILLET À VOTRE DISPOSITION**

- Photos produits : packshot et ambiance
- Vidéos en fichier source et liens YouTube
- Outils marketing (logos, bannières, grilles de tailles, etc.)

POUR TOUTE QUESTION, CONTACTEZ VOTRE REPRÉSENTANT OU SERVICE CLIENT

<https://media.milletmountaingroup.com/>

## **MILLET MOUNTAIN GROUP B2B: ELASTIC FAST RESTOCKS**

- Real-time stock updates
- Detailed product sheets
- Promotional offers
- Preparation time: 1 business day for restocks
- Preparation time: 3 business days for standard orders

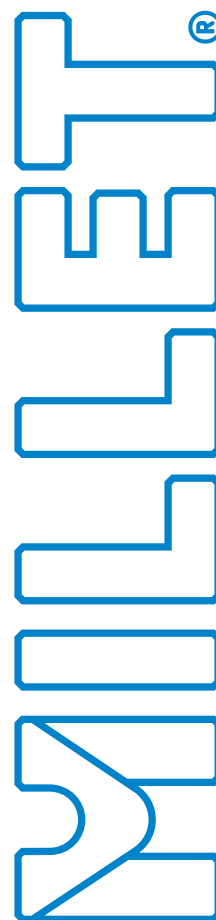
FOR ANY QUESTIONS, PLEASE CONTACT YOUR REPRESENTATIVE OR CUSTOMER SERVICE.

## **MILLET MOUNTAIN GROUP B2B : ELASTIC RÉASSORTS RAPIDES**

- Stocks en temps réel
- Fiches produits détaillées
- Offres promotionnelles
- Préparation en 1 jour ouvré pour les réassorts
- Préparation en 3 jours ouvrés pour les commandes de base

POUR TOUTE QUESTION, CONTACTEZ VOTRE REPRÉSENTANT OU SERVICE CLIENT

<https://b2b.milletmountaingroup.com/>



# SEGMENTATION

## SEGMENTATION & FRANCHISES

OUR COLLECTION IS RANKED BY SEGMENTS OF USE. THESE ARE THE MAJOR PRACTICES COVERED BY MILLET OFFER.

It includes mountaineering, trail running and trekking-hiking. Each SEGMENT has one or more FRANCHISES. These franchises group together products corresponding to a more precise practice. For example, we separate Hiking and Trekking. We give everyone the means to gear up and elevate in the mountains, whatever their need.

NOTRE COLLECTION EST ORGANISÉE EN SEGMENTS D'USAGES. CE SONT LES GRANDES PRATIQUES QUI SONT COUVERTES PAR L'OFFRE MILLET.

On retrouve ici l'alpinisme, le trail ou encore le trekking-hiking. Dans chaque SEGMENT, une ou plusieurs FRANCHISES. Ces franchises regroupent des produits correspondants à une pratique plus précise. On distingue par exemple le Hiking du Trekking. Ainsi, nous offrons à chacune et chacun la possibilité de s'équiper et de s'élever en montagne, quel que soit le besoin.



TRILOGY

MXP - JORASSES - ICON



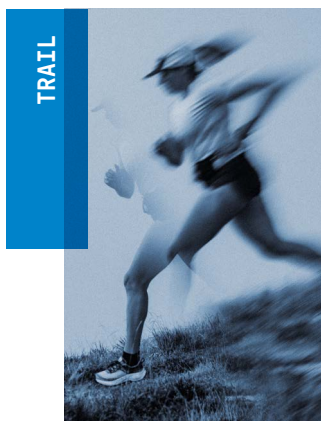
MOUNTAINEERING

EVEREST - KAMET - PROLIGHTER  
- CIMAÏ



TREKING/HIKING

UBIC - SENECA - PARMELAN



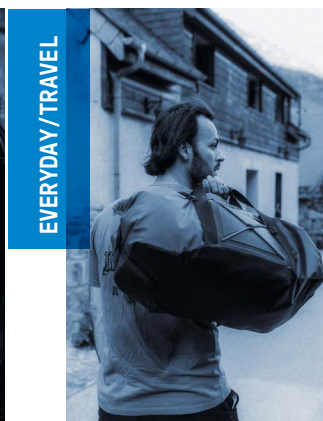
TRAIL

INTENSE PRO - INTENSE



TRANSVERSE

EVOLÉ - BOSSONS - DRYNAMIC



EVERYDAY/TRAVEL

CHAMONIX

# ASSORTMENTS

## ASSORTMENT STRATEGY

### EACH MILLET PRODUCT IS IDENTIFIED AS

«CORE», «EXTENSION» OR «BASIC».

This product assortment strategy meets the objective of addressing the right product, to the right consumer, in the right distribution channel.

### CHAQUE PRODUIT MILLET EST IDENTIFIÉ COMME

«CORE», «EXTENSION» OU «BASIC».

Cette stratégie d'assortiment produits répond à l'objectif d'adresser le bon produit, au bon consommateur, dans le bon canal de distribution.

### CORE

**CORE PRODUCTS** answer to main needs of MILLET consumers.

Les produits CORE correspondent aux principaux besoins d'usage des consommateurs MILLET.

### EXTENSION

**EXTENSION PRODUCTS** meet a more specific need and complete the CORE offer.

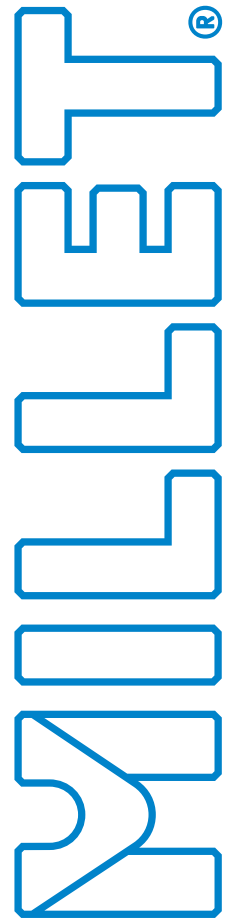
Les produits EXTENSION répondent à un besoin plus spécifique et complètent l'offre CORE.

### BASIC

**BASIC PRODUCTS** are the ideal answer to versatility needs.

A categorization of the range supported by flagship silhouettes, for an attractive in-store presentation.

Les produits BASIC offrent une réponse idéale au besoin de polyvalence. Une catégorisation de l'offre soutenue par des silhouettes phares, favorisant une mise en avant attractive en magasin.



# SEASONAL STORIES

HISTOIRES DE SAISON

TRILOGY



TRILOGY ICON  
BIG WALL READY!

BIG WALL - GROENLAND  
Symon WelFringer



Big wall climbing is a discipline in its own right. Spending several days on a 300-meter wall goes beyond mere performance, it's a journey, an adventure. The mountains are changing, and our practices are evolving. Symon WelFringer, a Millet athlete and meteorologist, observes this during his expeditions, from Greenland to Pakistan: retreating glaciers, unstable classic routes, and shifting seasons. In the face of these upheavals, rock faces, whether ancient or newly exposed, emerge as safer options.

These challenges inspire the *Trilogy Big Wall* collection: lightweight, durable, and versatile products designed to adapt to summer activities and current and future conditions. Light colors, long sleeves, wide hoods, and reinforcements ensure protection, comfort, and durability.

Le *Big Wall* est une discipline à part entière. Passer plusieurs jours sur une paroi de 300 mètres dépasse la performance, c'est un voyage, une aventure. La montagne change et nos pratiques évoluent. Symon WelFringer, athlète Millet et météorologue, l'observe lors de ses expéditions, du Groenland au Pakistan : glaciers en recul, voies classiques instables, saisons avancées. Face à ces bouleversements, les parois rocheuses, qu'elles soient anciennes ou nouvellement révélées, s'imposent comme des refuges plus sûrs.

Ces enjeux inspirent la collection *Trilogy Big Wall* : des produits légers, robustes et polyvalents, pensés pour s'adapter aux activités estivales et aux conditions actuelles et futures. Teintes claires, manches longues, capuches larges et renforts assurent protection, confort et durabilité.



TRAIL

# INTENSE

INNOVATION FOR LONG-DISTANCE  
RUNNING  
L'INNOVATION AU SERVICE DES LONGUES  
DISTANCES

Running long distances is no trivial matter. As the miles go by, fatigue sets in, your focus wanes, and conditions can take a turn for the worse, rain, wind, and humidity. It's in the face of inclement weather that the Intense PRO 3L Jacket proves its true value.

Its unique magnetic closure allows for unrestricted movement and eliminates unnecessary effort when energy is low. Even in the rain, or under physically, mentally, or environmentally challenging conditions, accessing your pack becomes intuitive, almost instinctive.

Developed with our innovation studio and relentlessly tested by Thomas Butez, its 3-layer construction delivers unprecedented waterproofing and breathability without compromising on lightness. Months upon months of work and refinement for professionals and demanding enthusiasts alike.

Courir de longues distances n'a rien d'anodin. Au fil des kilomètres, la fatigue s'installe, la lucidité se brouille et les conditions peuvent basculer soudainement vers la pluie, le vent, l'humidité. C'est face aux intempéries que la Veste Intense PRO 3L révèle toute sa pertinence. Son ouverture aimantée unique libère le mouvement et élimine l'effort superflu lorsque l'énergie se fait rare. Même sous la pluie, dans des conditions physiques, mentales ou environnementales dégradées, accéder à son sac devient intuitif, presque instinctif.

Développée avec notre studio d'innovation et testée sans relâche par Thomas Butez, sa construction 3 couches offre une imperméabilité et une respirabilité sans précédent, sans compromettre la légèreté. Des mois et des mois de travail et d'ajustements pour les pros et les amateurs exigeants.

TREKKING/HIKING

# PARMELAN

CARRY YOUR LIGHT HIKING DREAMS  
PORTEZ VOS RÊVES DE LIGHT HIKING

Light hiking is a mindset: moving light and shedding the unnecessary. Whether for an improvised bivouac or a long-distance journey like the Hexatrek, the more you carry, the slower you go. Every gram saved is a step closer to freedom. Blending innovation with minimalism, Millet introduces the Parmelan range, designed for light hiking: technical, versatile, ultra-light clothing and gear. In this world, the Parmelan 17, 25, or 35 backpack is the icon of adventure, carrying within it your dreams of unhindered journeys. Lightening your load isn't an end in itself; it's a way to reconnect with what truly matters. And to make room for the Unknown.

Le *light hiking* est un état d'esprit : marcher léger et se délester du superflu. Pour un bivouac improvisé ou un voyage à pied sur l'Hexatrek : plus on porte, moins on avance. Chaque gramme en moins est un pas de plus vers la liberté. Entre innovation et minimalisme, pensée pour le *light hiking*, Millet présente sa gamme Parmelan : des vêtements et équipements techniques, polyvalents et ultra-légers. Dans cet univers, le sac Parmelan 17, 25 ou 35 est l'icône de l'aventure, qui porte en lui vos rêves d'itinérance. S'alléger n'est pas une fin en soi, c'est un moyen de se reconnecter à l'essentiel. Et faire de la place pour l'Inconnu.

# COLOR STORIES

HISTOIRES COULEURS

MEN

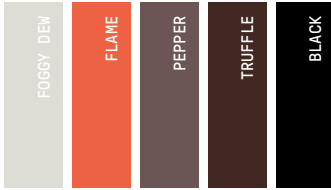
### TRILOGY COLOR



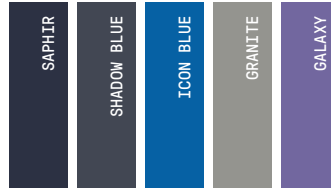
### PRO COLOR



### DESERT SPICE COLOR



### DISCOVERY COLOR

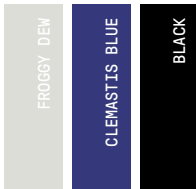


### DRY FIELDS COLOR



WOMEN

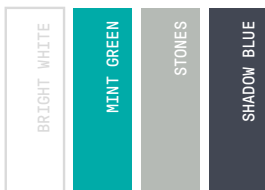
### TRILOGY COLOR



### PRO COLOR

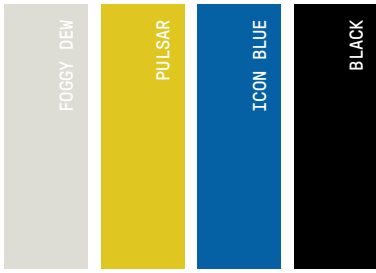


### FRESHNESS COLOR



### WILD ONIRISM COLOR





# MEN | TRILOGY

1



2



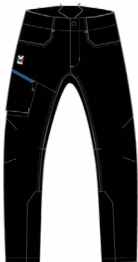
3



4



5



6



7



TRIOLOGY OUTFIT | TRIOLOGY ICON



1 - MIV10859 CHAMONIX LOGO NECKWARMER

2 - MIV10563 - TRIOLOGY ICON GTX PRO JKT M

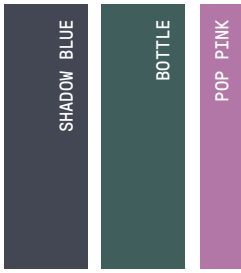
3 - MIV11199 - TRIOLOGY ICON BIG WALL HD M

4 - MIV11194 - TRIOLOGY ICON BIG WALL TS LS M

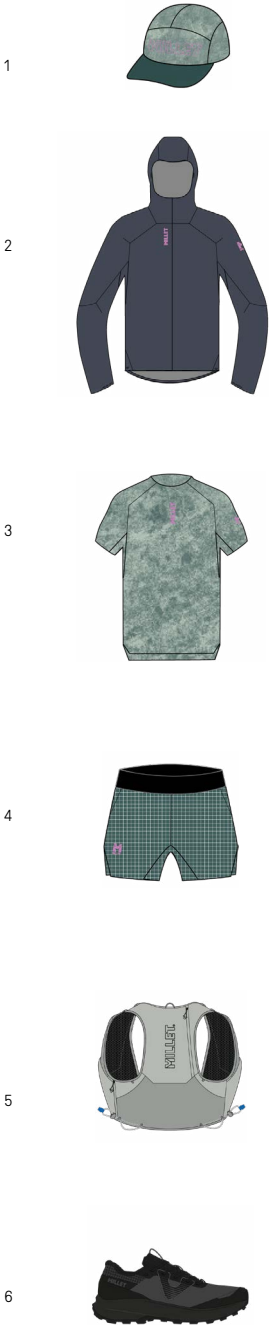
5 - MIV11192 - TRIOLOGY ICON BIG WALL PT M

6 - MIS10049 - TRIOLOGY ICON HAUL 30

7 - MIG10005 - FRICTION EU GTX U



# MEN | PRO

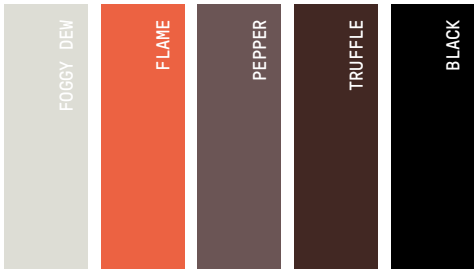


TRAIL RUNNING PRO OUTFIT | INTENSE PRO



- 1 - MIV11210 - INTENSE LIGHT CAP
- 2 - MIV11170 - INTENSE PRO 3L JKT M
- 3 - MIV11169 - INTENSE PRO LIGHT TS M

- 4 - MIV11166 - INTENSE PRO LIGHT SHORT M 5
- 5 - MIS10102 - INTENSE 5
- 6 - MIG10037 - INTENSE ENDURA M



# MEN | DESERT SPICE

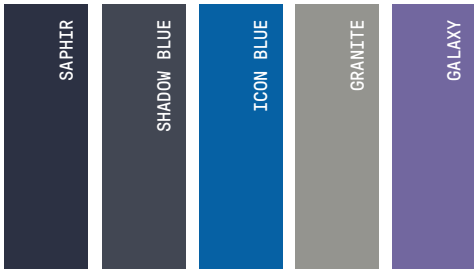


TRAIL RUNNING OUTFIT | INTENSE



- 1 - MIV10857 - INTENSE CAP
- 2 - MIV11171 - INTENSE 2.5L JKT M
- 3 - MIV10366 - INTENSE LIGHT TS SS M

- 4 - MIV11173 - INTENSE SHORT TIGHT M
- 5 - MIS10102 - INTENSE 5
- 6 - MIG10037 - INTENSE ENDURA M



# MEN | **DISCOVERY**

1



2



3



4



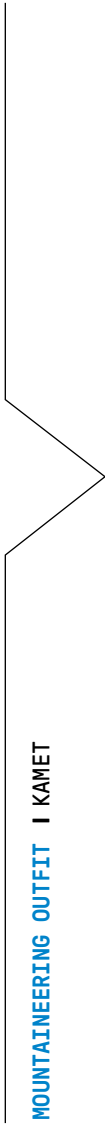
5



6



7



- 1 - MIV11119 - KAMET VISOR M
- 2 - MIV10557 - KAMET GTX JKT M
- 3 - MIV10965 - KAMET GRID HD M
- 4 - MIV11188 - KAMET TS SS M

- 5 - MIV10565 / KAMET XCS PANT M
- 6 - MIS10004 - KAMET LIGHT 25+5
- 7 - MIG1850 - TRILOGY JORASSES 4S GTX



# MEN | DRY FIELDS

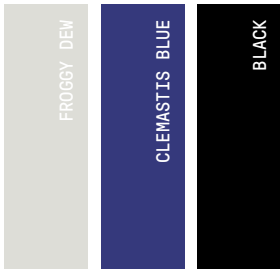


TREKKING / HIKING OUTFIT | SENECA / UBIC



- 1 - MIV10856 CHAMONIX TRUCKER CAP
- 2 - MIV10808 SENECA 2.5L JKT M
- 3 - MIV1145 SENECA LIGHT FLEECE JKT M
- 4 - MIV11217 UBIC LIGHT TREK TS SS M

- 5 - MIV10428 UBIC STR ZIP OFF PT M
- 6 - MIS10073 - SENECA AIR 40
- 7 - MIG10039 - SENECA 2 M



# WOMEN | TRILOGY

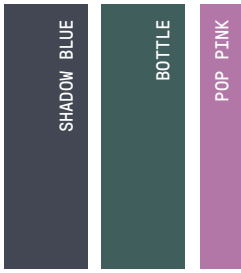


TRILOGY OUTFIT | TRILOGY ICON



- 1 - MIV11119 - KAMET VISOR M
- 2 - MIV10554 - TRILOGY ICON GTX PRO JKT W
- 3 - MIV10774 - TRILOGY ICON LIGHTGRID H W
- 4 - MIV11196 - TRILOGY ICON BIG WALL LS W

- 5 - MIV11193 - TRILOGY ICON BIG WALL PT W
- 6 - MIS2332 - TRILOGY SKY 25+
- 7 - MIG1850 - TRILOGY JORASSES 4S GTX



# WOMEN | **PRO**

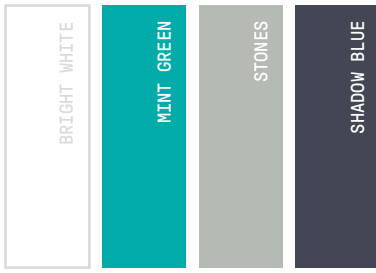


TRAIL RUNNING PRO OUTFIT | INTENSE PRO



- 1 - MIV11210 - INTENSE LIGHT CAP
- 2 - MIV11181 - INTENSE PRO 3L JKT W
- 3 - MIV11180 - INTENSE PRO LIGHT TS W

- 4 - MIV11176 - INTENSE PRO LIGHT SHORT W 5
- 5 - MIS2412 - INTENSE PRO BELT
- 6 - MIG10038 - INTENSE ENDURA W



# WOMEN | FRESHNESS

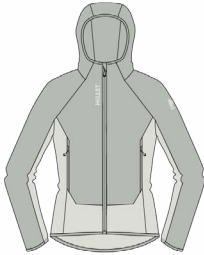
1



2



3



4



5



6



7



MOUNTAINERING OUTFIT | KAMET



1 - MIV11119 - KAMET VISOR M

2 - MIV10546 - KAMET GTX JKT W

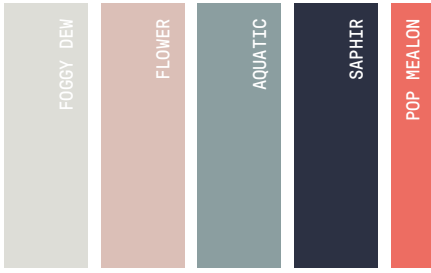
3 - MIV10783 - KAMET XCS LIGHT HOODIE W

4 - MIV10091 - FUSION TS SS W

5 - MIV10784 - KAMET XCS LIGHT SHORT W

6 - MIS10090 - KAMET 30

7 - MIG10012 - FRICTION LT W



# WOMEN | WILD ONIRISM



TREKKING / HIKING OUTFIT | SENECA / UBIC



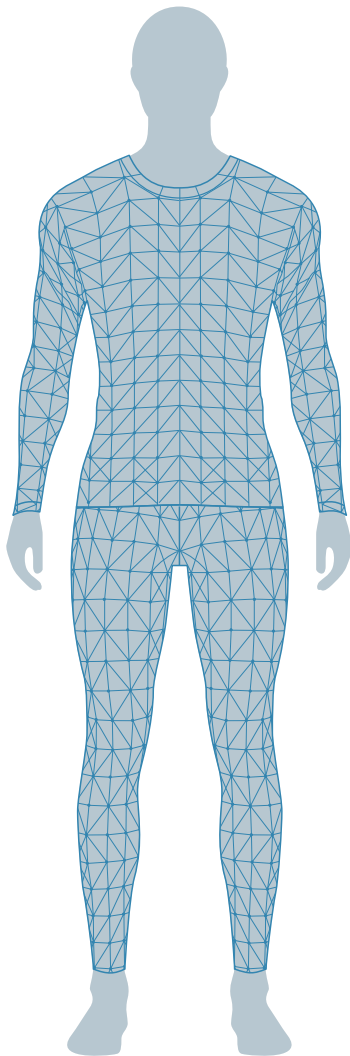
- 1 - MIV10853 - CHAMONIX HAT M
- 2 - MIV10810 - SENECA 2,5 L JKT W
- 3 - MIV11157 - SENECA LIGHT FLEECE JKT W
- 4 - MIV11161 - SENECA SHIRT LS W

- 5 - MIV10432 - UBIC STR ZIP OFF PT W
- 6 - MIS10072 - SENECA AIR 30
- 7 - MIG10021 - INTENSE 4S GTX W

# MILLET FITTING

TAILLANTS MILLET

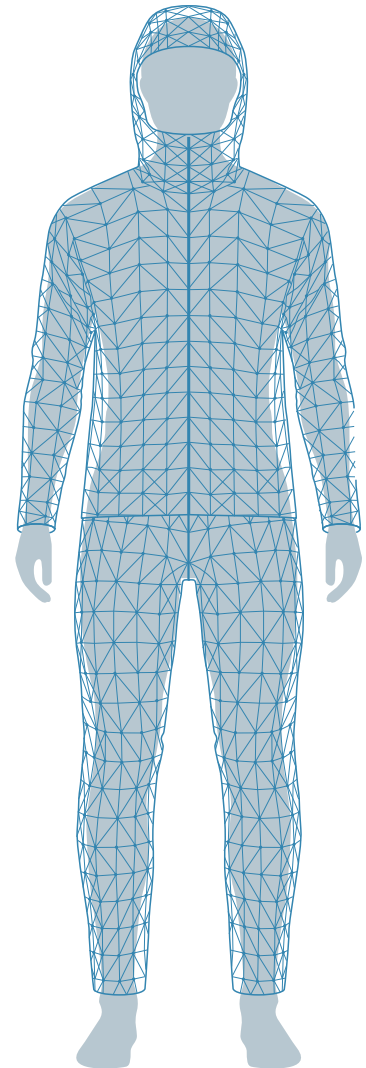
**NEXT TO SKIN FIT™**  
PROCHE DU CORPS



Close-fitting cut designed to be worn directly against the skin, without any intermediate layer. Fully maximizes the performance of the materials used.

Coupe près du corps conçue pour être portée directement sur la peau, sans couche intermédiaire. Exploite pleinement le potentiel des matières utilisées.

**ADJUSTED FIT™**  
AJUSTÉ



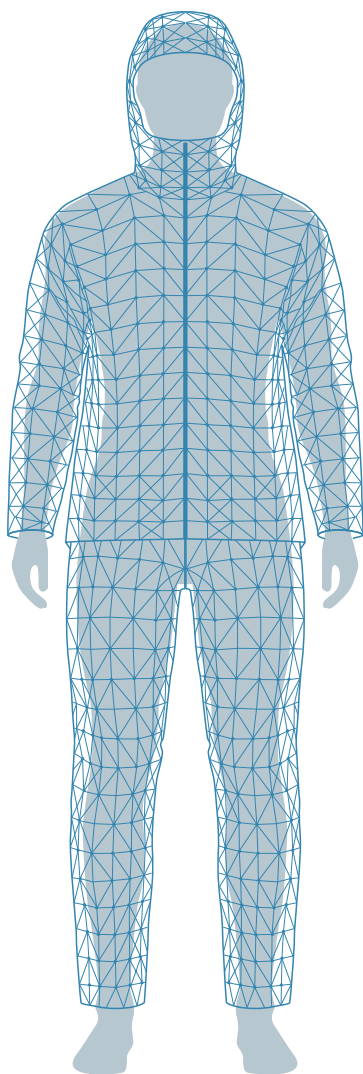
Fitted cut designed for those seeking an ergonomic silhouette. Optimized to be worn on its own or as part of a layering system.

Coupe ajustée, pensée pour ceux qui recherchent une silhouette ergonomique. Optimisée pour être portée seule ou en multicouches.



MORE INFORMATIONS

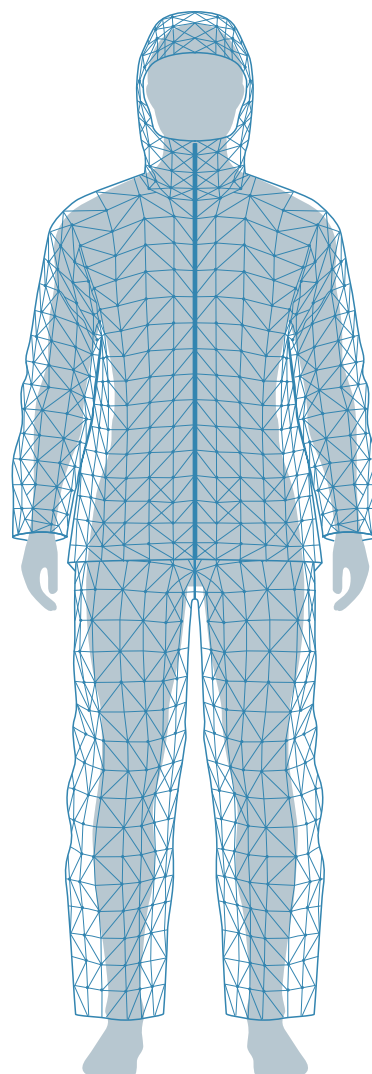
**REGULAR FIT™**  
STANDARD



Regular cut designed for those who prioritize comfort. Ideal over any type of layers, offering a good balance between ease of movement and style.

Coupe standard, pensée pour ceux qui privilégient le confort. Idéale sur tout type de couches, offrant un bon équilibre entre aisance et style.

**RELAXED FIT™**  
AMPLE



Relaxed cut, offering a casual style and maximum freedom of movement. Generous volume allows easy layering.

Coupe ample, offrant un style décontracté et une grande liberté de mouvement. Un volume favorisant le port en multicouches.

# TRILOGY

- 23 MEN'S APPAREL
- 25 WOMEN'S APPAREL
- 26 EQUIPMENT



## MEN'S APPAREL

### MIV10773 - TRILOGY MXP DOWN SUIT

**NEW** **EXT**

#### THERMAL LAYERS

PERTEX® DIAMOND PA RECYCLED  
DYNEEMA® ULTRALIGHT DOWNPROOF -  
80% PA REC, 13% DYN, 7% PES REC  
INSULATION: 90/10 WHITE  
GOOSEDOWN RDS FP850 + EXPEDRY

REGULAR FIT™  
SIZES: XS-XL  
WEIGHT: 1830 g  
DOWN WEIGHT: 694 g



N3170  
ICON BLUE

### MIV10795 - TRILOGY MXP MITTEN

**NEW** **EXT**

#### GLOVES

DYNEEMA® ULTRALIGHT DOWNPROOF -  
80% PA REC, 13% DYN, 7% PES REC  
INSULATION: K DRY™ 90/10 GREY  
GOOSE DOWN RDS FP 800

REGULAR FIT™  
SIZES: XS-XL  
WEIGHT: 265 g  
DOWN WEIGHT: 65 g



N3170  
ICON BLUE

### MIV10833 - TRILOGY MXP SOCKS

**NEW** **EXT**

#### SOCKS

PERTEX® DIAMOND PA RECYCLED  
DYNEEMA® ULTRALIGHT DOWNPROOF -  
80% PA REC, 13% DYN, 7% PES REC  
INSULATION: K DRY™ 90/10 GREY  
GOOSE DOWN RDS FP 800

SIZES: XS-XL  
WEIGHT: 153 g  
DOWN WEIGHT: 42 g



N3170  
ICON BLUE

### MIV10690 - TRILOGY JORASSES GTXP ST M

**EXT**

#### PROTECTIVE SHELLS

GORE-TEX PRO 70D EPE 3L PA RECYCLED  
X.C.S WOOL STRIPES DWR 160GR/M2

ADJUSTED FIT™  
SIZES: S-L  
WEIGHT: 750 g



N3174  
BLACK/ICON BLUE

### MIV10901 - TRILOGY JORASSES DYNEEMA HD M

**EXT**

#### PROTECTIVE SHELLS

DYNEEMA® LIGHT 20K/10K 3L -  
80% PA REC, 13% DYN, 7% PES REC

REGULAR FIT™  
SIZES: S-XL  
WEIGHT: 402 g



N3170  
ICON BLUE

### MIV10551 - TRILOGY JORASSES DYNE PT M

**EXT**

#### PROTECTIVE SHELLS

DYNEEMA® LIGHT 20K/10K 3L -  
80% PA REC, 13% DYN, 7% PES REC

REGULAR FIT™  
SIZES: XS-XL  
WEIGHT: 440 g



N0247  
BLACK

### MIV10180 - TRILOGY JORASSES DOWN HD M

**EXT**

#### THERMAL LAYERS

DYNEEMA® ULTRALIGHT DOWNPROOF -  
80% PA REC, 13% DYN, 7% PES REC  
INSULATION: EXPEDRY GOOSE DOWN  
FP 1000 RDS

RELAXED FIT™  
SIZES: XS-L  
WEIGHT: 725 g  
DOWN WEIGHT: 320 g



N3170  
ICON BLUE

N0247  
BLACK

### MIV10772 - TRILOGY JORASSES DOWN PT

**NEW** **EXT**

#### THERMAL LAYERS

PERTEX® DIAMOND PA RECYCLED  
DYNEEMA® ULTRALIGHT DOWNPROOF -  
80% PA REC, 13% DYN, 7% PES REC  
INSULATION: 90/10 WHITE  
GOOSEDOWN RDS FP850 + EXPEDRY

REGULAR FIT™  
SIZES: XS-L  
WEIGHT: 554 g  
DOWN WEIGHT: 181 g



N3170  
ICON BLUE

### MIV10033 - TRILOGY JORASSES WOOL HD M

**EXT**

#### THERMAL LAYERS

DYNEEMA® ULTRALIGHT DOWNPROOF -  
80% PA REC, 13% DYN, 7% PES REC  
X.C.S WOOL STRIPES DWR 160GR/M2  
INSULATION: BAVARIAN WOOL 45GR

ADJUSTED FIT™  
SIZES: S-XL  
WEIGHT: 319 g



N3175  
ICON BLUE/BLACK

N0247  
BLACK

### MIV10182 - TRILOGY JORASSES WOOL PT M

**EXT**

#### THERMAL LAYERS

DYNEEMA® ULTRALIGHT DOWNPROOF -  
80% PA REC, 13% DYN, 7% PES REC  
X.C.S WOOL STRIPES DWR 160GR/M2  
INSULATION: BAVARIAN WOOL 45GR

REGULAR FIT™  
SIZES: S-L  
WEIGHT: 235 g



N0247  
BLACK

### MIV10183 - TRILOGY JORASSES WOOL ST M

**EXT**

#### TECHNICAL UNDERWEAR

POLARTEC® POWER WOOL™ LIGHT -  
51% PES, 42% MEW, 7% EA  
TRILOGY WOOL-BLEND - 50% MEW,  
50% PES

NEXT TO SKIN FIT™  
SIZES: S-L  
WEIGHT: 330 g



N0247  
BLACK

### MIV10413 - TRILOGY JORASSES ZIPO PT M

**EXT**

#### TRANSFER LAYERS

ADJUSTED FIT™  
SIZES: XS-XL  
WEIGHT: 290 g



N0247  
BLACK

### MIV10563 - TRILOGY ICON GTX PRO JKT M

**CORE**

#### PROTECTIVE SHELLS

GORE-TEX PRO 70D EPE 3L PA  
RECYCLED

REGULAR FIT™  
SIZES: XS-XXL  
WEIGHT: 420 g



N7317  
SAPHIR

N0247  
BLACK

N0071  
PULSAR/BLACK

**MIV10564 - TRILOGY ICON GTX PRO PT M**

**CORE**

**PROTECTIVE SHELLS**

GORE-TEX PRO 70D EPE 3L PA RECYCLED

REGULAR FIT™  
SIZES: XS-XL  
WEIGHT: 581 g



N0247  
BLACK

**MIV11199 - TRILOGY ICON BIG WALL HD M**

**NEW** **CORE**

**ACTION SHELLS**

PAYEN X.C.S LIGHT DWR

ADJUSTED FIT™  
SIZES: XS-XXL  
WEIGHT: 230 g



N9301  
FOGGY DEW/BLACK

N0247  
BLACK

N0071  
PULSAR/BLACK

**MIV10446 - TRILOGY ICON LIGHTGRID HD M**

**CORE**

**THERMAL LAYERS**

POLARTEC® POWERGRID HIGH EFFICIENCY RECYCLED X.C.S. RECYCLED PA STRETCH

ADJUSTED FIT™  
SIZES: XS-XXL  
WEIGHT: 280 g



**NEW** N8014  
FOGGY DEW

N7317  
SAPHIR

N3170  
ICON BLUE

N0247  
BLACK

N0059  
PULSAR

**MIV11194 - TRILOGY ICON BIG WALL LS M**

**NEW** **CORE**

**TRANSFER LAYERS**

POLARTEC® POWERDRY

REGULAR FIT™  
SIZES: XS-XXL  
WEIGHT: 184 g



N8014  
FOGGY DEW

N0059  
PULSAR

**MIV10925 - TRILOGY ICON ADVANCED PT M**

**CORE**

**ACTION SHELLS**

X.C.S WOOL STRIPES DWR 160GR/M2

ADJUSTED FIT™  
SIZES: XS-XL  
WEIGHT: 406 g



N0247  
BLACK

**MIV10442 - TRILOGY ICON CORDURA PT M**

**CORE**

**ACTION SHELLS**

X.C.S X TREM CORDURA® - 69% PA REC, 20% CDR, 11% EA

ADJUSTED FIT™  
SIZES: XS-XL  
WEIGHT: 346 g



N7317  
SAPHIR

N0247  
BLACK

**MIV11192 - TRILOGY ICON BIG WALL PT M**

**NEW** **CORE**

**ACTION SHELLS**

X.C.S. RECYCLED PA STRETCH

REGULAR FIT™  
SIZES: XS-XL  
WEIGHT: 300 g



N0247  
BLACK

**MIV10443 - TRILOGY ICON CORDURA SH M**

**CORE**

**ACTION SHELLS**

X.C.S X TREM CORDURA® - 69% PA REC, 20% CDR, 11% EA

ADJUSTED FIT™  
SIZES: XS-XL  
WEIGHT: 222 g



N7317  
SAPHIR

N0247  
BLACK

**MIV9946 - TRILOGY WOOL TS LS M**

**CORE**

**TRANSFER LAYERS**

TRILOGY WOOL-BLEND - 50% MEW, 50% PES

ADJUSTED FIT™  
SIZES: XS-XXL  
WEIGHT: 182 g



N7317  
SAPHIR

N3170  
ICON BLUE

N0059  
PULSAR

**MIV10726 - TRILOGY ICON TS SS M**

**CORE**

**TRANSFER LAYERS**

TRILOGY WOOL-BLEND - 50% MEW, 50% PES

ADJUSTED FIT™  
SIZES: XS-XXL  
WEIGHT: 146 g



**NEW** N8014  
FOGGY DEW

N7317  
SAPHIR

N0247  
BLACK

**NEW** N0059  
PULSAR

**MIV11195 - TRILOGY ICON DELTA TS SS M**

**NEW** **CORE**

**TRANSFER LAYERS**

POLARTEC® POWERDRY DELTA

ADJUSTED FIT™  
SIZES: XS-XXL  
WEIGHT: 138 g



N3170  
ICON BLUE

N0247  
BLACK

N0059  
PULSAR

## WOMEN'S APPAREL

### MIV10554 - TRILOGY ICON GTX PRO JKT W

CORE 

#### PROTECTIVE SHELLS

GORE-TEX PRO 70D EPE 3L PA  
RECYCLED

REGULAR FIT™  
SIZES: XS-XL  
WEIGHT: 420 g



F0247  
BLACK

F0085  
CLEMATIS BLUE

### MIV10545 - TRILOGY ICON GTX PRO PT W

CORE 

#### PROTECTIVE SHELLS

GORE-TEX PRO 70D EPE 3L PA  
RECYCLED

REGULAR FIT™  
SIZES: XS-XL  
WEIGHT: 525 g



F0247  
BLACK

### MIV10774 - TRILOGY ICON LIGHTGRID H W

CORE 

#### THERMAL LAYERS

POLARTEC® POWERGRID HIGH  
EFFICIENCY RECYCLED

ADJUSTED FIT™  
SIZES: XS-XL  
WEIGHT: 245 g



F8014  
FOGGY DEW

F0085  
CLEMATIS BLUE

### MIV11196 - TRILOGY ICON BIG WALL LS W

NEW CORE 

#### TRANSFER LAYERS

POLARTEC® POWERDRY

REGULAR FIT™  
SIZES: XS-XL  
WEIGHT: 144 g



F8014  
FOGGY DEW

F0085  
CLEMATIS BLUE

### MIV10927 - TRILOGY ICON ADVANCED PT W

CORE 

#### ACTION SHELLS

X.C.S WOOL STRIPES DWR 160GR/M2

ADJUSTED FIT™  
SIZES: XS-XL  
WEIGHT: 380 g



F0247  
BLACK

### MIV10444 - TRILOGY ICON CORDURA PT W

CORE

#### ACTION SHELLS

X.C.S X TREM CORDURA® -  
69% PA REC, 20% CDR, 11% EA

ADJUSTED FIT™  
SIZES: XS-XL  
WEIGHT: 290 g



NEW F7317  
SAPHIR



NEW F0247  
BLACK

### MIV11193 - TRILOGY ICON BIG WALL PT W

NEW CORE 

#### ACTION SHELLS

X.C.S. RECYCLED PA STRETCH

ADJUSTED FIT™  
SIZES: XS-XL  
WEIGHT: 220 g



F0247  
BLACK

### MIV10445 - TRILOGY ICON CORDURA SH W

CORE

#### ACTION SHELLS

X.C.S X TREM CORDURA® -  
69% PA REC, 20% CDR, 11% EA

ADJUSTED FIT™  
SIZES: XS-XL  
WEIGHT: 161 g



NEW F7317  
SAPHIR

NEW F0247  
BLACK

### MIV9955 - TRILOGY WOOL TS LS W

CORE 

#### TRANSFER LAYERS

TRILOGY WOOL-BLEND -  
50% MEW, 50% PES

ADJUSTED FIT™  
SIZES: XS-XL  
WEIGHT: 144 g



F8014  
FOGGY DEW

F0085  
CLEMATIS BLUE

### MIV10725 - TRILOGY ICON TS SS W

CORE 

#### TRANSFER LAYERS

TRILOGY WOOL-BLEND -  
50% MEW, 50% PES

ADJUSTED FIT™  
SIZES: XS-XL  
WEIGHT: 68 g



NEW F8014  
FOGGY DEW

NEW F7317  
SAPHIR

### MIV11197 - TRILOGY ICON DELTA TS SS W

NEW CORE 

#### TRANSFER LAYERS

POLARTEC® POWERDRY DELTA

ADJUSTED FIT™  
SIZES: XS-XL  
WEIGHT: 105 g



F8014  
FOGGY DEW

F0085  
CLEMATIS BLUE

# TRILOGY

BACKPACKS  
SLEEPING BAGS  
FOOTWEAR



## BACKPACKS

### MIS2492 - TRILOGY MXP 45

**NEW** **EXT**

**CONTACT UL™**  
BACK LENGTH: 46 CM  
PA 100D MINI SQUARE RIPSTOP  
ROBIC UHMWPE  
DYNEEMA® STRETCH

CAPACITY: 45 L  
WEIGHT: 610 g



N8014  
FOGGY DEW

### MIS2387 - TRILOGY JORASSES 30

**EXT**

**AERO FLEX™**  
BACK LENGTH: 46 CM  
PA 210D HONEYCOMB ROBIC  
DYNEEMA® STRETCH

CAPACITY: 30 L  
WEIGHT: 730 g



N3170  
ICON BLUE

### MIS2441 - TRILOGY JORASSES 20+5

**EXT**

**AERO FLEX™**  
BACK LENGTH: 46 CM  
PA 100D MINI SQUARE RIPSTOP  
ROBIC UHMWPE

CAPACITY: 20+5 L  
WEIGHT: 710 g



N8014  
FOGGY DEW

### MIS10049 - TRILOGY ICON HAUL 30

**NEW** **CORE**

**CONTACT UL™**  
BACK LENGTH: 46 CM  
RECYCLED PA 420D SQUARE  
RIPSTOP TPU

CAPACITY: 30 L  
WEIGHT: 850 g



N0247  
BLACK

### MIS2332 - TRILOGY SKY 25+

**CORE**

**AERO FLEX™**  
BACK LENGTH: S/M 43 CM - L/XL 46 CM  
PA 70D ROBIC - DYNEEMA® 300D  
SQUARE RIPSTOP  
DYNEEMA® STRETCH

CAPACITY: 25 L  
SIZES: S/M-L/XL  
WEIGHT: 660 g



N0020  
WHITE

N0247  
BLACK

## TRILOGY

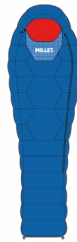
### MIC1167 - TRILOGY MXP -40°C

**NEW** **EXT**

#### DOWN

TEMPERATURE: -18°C / -27°C / -52°C  
PERTEX® DIAMOND PA RECYCLED  
DYNEEMA® ULTRALIGHT DOWNPROOF -  
80% PA REC, 13% DYN, 7% PES REC  
INSULATION: RDS GOOSE DOWN 90/10 -  
FP 800 - EXPEDRY

CAPACITY: 15 L  
WEIGHT: 2000 g  
DOWN WEIGHT: 1300 g



N3170  
ICON BLUE

### MIC1125 - TRILOGY BIVY

**CORE**

PERTEX® SHIELD XLIGHT 20K/20K 3L PA

CAPACITY: 1 L  
WEIGHT: 235 g



N7317  
SAPHIR

## TRILOGY

### MIG1850 - TRILOGY JORASSES 4S GTX

**CORE** 

#### VIBRAM MALESCO/DURASTEPE

ITALIAN EXTREME TENACITY UPPER  
GORE-TEX MEMBRANE EPE

SIZES: 6-11.5  
WEIGHT: 880 g



N0247  
BLACK

# APPAREL

- 29 MEN'S APPAREL
- 41 WOMEN'S APPAREL
- 50 ESSENTIALS

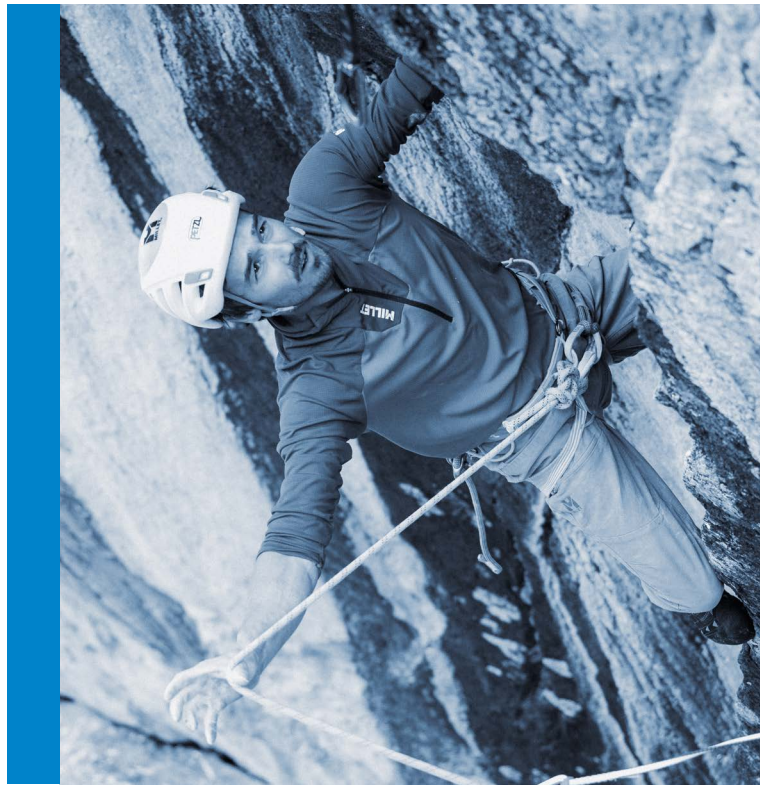




SIZE GUIDES

# MEN'S APPAREL

- MOUNTAINEERING
- TREKKING/HIKING
- TRAIL
- TRANSVERSE
- EVERYDAY/TRAVEL



## MOUNTAINEERING

### MIV10544 - KAMET GTX PRO JKT M

EXT

#### PROTECTIVE SHELLS

GORE-TEX PRO 70D EPE 3L PA  
RECYCLED

REGULAR FIT™  
SIZES: XS-XXL  
WEIGHT: 480 g



N3175  
ICON BLUE/BLACK

N0247  
BLACK

N0335  
RED

### MIV10557 - KAMET GTX JKT M

CORE

#### PROTECTIVE SHELLS

GORE-TEX PLAIN 70D EPE 3L PA  
RECYCLED

REGULAR FIT™  
SIZES: XS-XXL  
WEIGHT: 434 g



N7764  
FLAME

N7094  
GRAPE LEAF

N3689  
WARM OLIVE

N0247  
BLACK

N0069  
GRANITE/SAPHIR

N0068  
GALAXY/SAPHIR

### MIV10778 - KAMET XCS LIGHT HOODIE M

CORE

#### ACTION SHELLS

X.C.S. RECYCLED PA STRETCH

ADJUSTED FIT™  
SIZES: XS-XXL  
WEIGHT: 310 g



NEW N7094  
GRAPE LEAF

N0247  
BLACK

NEW N0069  
GRANITE/SAPHIR

NEW N0052  
WARM OLIVE/BLACK

N0033  
PEPPER

### MIV10779 - KAMET XCS VEST M

EXT

#### ACTION SHELLS

X.C.S. RECYCLED PA STRETCH

ADJUSTED FIT™  
SIZES: XS-XXL  
WEIGHT: 200 g



NEW N7094  
GRAPE LEAF

N0247  
BLACK

**MIV10965 - KAMET GRID HD M**

**CORE** 

**THERMAL LAYERS**

POLARTEC® POWERGRID HEAVY  
RECYCLED

ADJUSTED FIT™  
SIZES: XS-XXL  
WEIGHT: 395 g



N7094 GRAPE LEAF    N3689 WARM OLIVE    N0247 BLACK    N0069 GRANITE/SAPHIR    N0068 GALAXY/SAPHIR    N0043 PAPIKA/PEPPER

**MIV10964 - KAMET GRID JKT M**

**CORE** 

**THERMAL LAYERS**

POLARTEC® POWERGRID HEAVY  
RECYCLED

ADJUSTED FIT™  
SIZES: XS-XXL  
WEIGHT: 338 g



N8408 PAPIKA    N0247 BLACK    **NEW** N0069 GRANITE/SAPHIR    **NEW** N0052 WARM OLIVE/BLACK

**MIV10827 - KAMET TS ZIP LS M**

**EXT** 

**TRANSFER LAYERS**

POLARTEC® POWERDRY  
SQUARE

ADJUSTED FIT™  
SIZES: XS-XXL  
WEIGHT: 136 g



N7094 GRAPE LEAF    N0247 BLACK    **NEW** N0069 GRANITE/SAPHIR    N0043 PAPIKA/PEPPER

**MIV10826 - KAMET TS ZIP SS M**

**EXT** 

**TRANSFER LAYERS**

POLARTEC® POWERDRY  
SQUARE

ADJUSTED FIT™  
SIZES: XS-XXL  
WEIGHT: 114 g



**NEW** N8620 GRAPE LEAF/BLACK    **NEW** N3689 WARM OLIVE    N2987 GRANITE    N0247 BLACK    N0043 PAPIKA/PEPPER

**MIV11188 - KAMET TS SS M**

**NEW** **CORE** 

**TRANSFER LAYERS**

POLARTEC® POWERDRY  
SQUARE

ADJUSTED FIT™  
SIZES: XS-XXL  
WEIGHT: 96 g



N7764 FLAME    N7317 SAPHIR    N7094 GRAPE LEAF    N3689 WARM OLIVE    N2987 GRANITE    N0247 BLACK    N0062 GALAXY

**MIV9738 - FUSION TS SS M**

**CORE**

**TRANSFER LAYERS**

POLARTEC® POWERDRY SQUARE

ADJUSTED FIT™  
SIZES: XS-XXL  
WEIGHT: 90 g



N9220 SAPHIR/SAPHIR    N8408 PAPRIKA    N8014 FOGGY DEW    **NEW N7094** GRAPE LEAF    N4063 BLACK/BLACK    **NEW N3689** WARM OLIVE    N3170 ICON BLUE    **NEW N2987** GRANITE    N0062 GALAXY    N0033 PEPPER

**MIV10760 - CIMAI NATURAL TS SS M**

**CORE**

**TRANSFER LAYERS**

SMART-BLEND™ ECOVERO™ - 65% PES, 35% VI

ADJUSTED FIT™  
SIZES: XS-XXL  
WEIGHT: 146 g



N8620 GRAPE LEAF/BLACK    N8408 PAPRIKA    **NEW N8014** FOGGY DEW    N0247 BLACK    **NEW N0052** WARM OLIVE/BLACK

**MIV10565 - KAMET XCS PANT M**

**CORE**

**ACTION SHELLS**

XCS RIPSTOP 230G PA

ADJUSTED FIT™  
SIZES: XS-XXL  
WEIGHT: 490 g



N7317 SAPHIR    N0247 BLACK

**MIV10776 - KAMET XCS LIGHT PANT M**

**CORE**

**ACTION SHELLS**

X.C.S. RECYCLED PA STRETCH

ADJUSTED FIT™  
SIZES: XS-XL  
WEIGHT: 278 g



**NEW N8620** GRAPE LEAF/BLACK    N7317 SAPHIR    N0247 BLACK

**MIV10828 - CIMAI POLY PANT M**

**EXT**

**TRANSFER LAYERS**

X.C.S. RECYCLED PA STRETCH

REGULAR FIT™  
SIZES: XS-XL  
WEIGHT: 282 g



N7094 GRAPE LEAF    N0247 BLACK    **NEW N0102** HEMP

**MIV10777 - KAMET XCS LIGHT SHORT M**

**CORE**

**ACTION SHELLS**

X.C.S. RECYCLED PA STRETCH

ADJUSTED FIT™  
SIZES: XS-XL  
WEIGHT: 175 g



**NEW N8620** GRAPE LEAF/BLACK    N7317 SAPHIR    N0247 BLACK

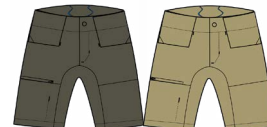
**MIV10829 - CIMAI POLY SHORT M**

**CORE**

**TRANSFER LAYERS**

X.C.S. RECYCLED PA STRETCH

REGULAR FIT™  
SIZES: XS-XL  
WEIGHT: 208 g



N7094 GRAPE LEAF    **NEW N0102** HEMP

## TREKKING / HIKING

### MIV10932 - UBIC GTX 3L JKT M

CORE 

#### PROTECTIVE SHELLS

GORE-TEX 75D EPE 3L PES  
RECYCLED

REGULAR FIT™  
SIZES: XS-XXL  
WEIGHT: 430 g



N7094 GRAPE LEAF      N6548 SHADOW BLUE      N0247 BLACK

### MIV10931 - UBIC GTX 2L JKT M

BASIC 

#### PROTECTIVE SHELLS

GORE-TEX 75D EPE 2L PES  
RECYCLED

REGULAR FIT™  
SIZES: XS-XXL  
WEIGHT: 440 g



NEW N8620 GRAPE LEAF/BLACK      N6548 SHADOW BLUE      N0247 BLACK      NEW N0062 GALAXY

### MIV11148 - PARMELAN 2,5L JKT M

NEW EXT 

#### PROTECTIVE SHELLS

DRYEDGE STRETCH PLAIN  
20K/20K 2,5L PES

REGULAR FIT™  
SIZES: XS-XXL  
WEIGHT: 240 g



N9545 GROVE      N6548 SHADOW BLUE      N3689 WARM OLIVE

### MIV10807 - SENECA STORM 3L JKT M

CORE 

#### PROTECTIVE SHELLS

DRYEDGE PLAIN 75D 20K/20K  
3L PES RECYCLED

REGULAR FIT™  
SIZES: XS-XXL  
WEIGHT: 480 g



N0247 BLACK      NEW N0119 SHADOW BLUE/  
GALAXY      N0074 SAPHIR/SHADOW  
BLUE

### MIV10808 - SENECA 2,5L JKT M

BASIC

#### PROTECTIVE SHELLS

DRYEDGE MICRO RIPSTOP 50D  
10K/10K 2,5L PES RECYCLED

ADJUSTED FIT™  
SIZES: XS-XXL  
WEIGHT: 340 g



N7094 GRAPE LEAF      NEW N3689 WARM OLIVE      N0247 BLACK      NEW N0111 SHADOW BLUE/  
HEMP/GROVE      NEW N0110 SHADOW BLUE/  
GRANITE

### MIV10882 - PARMELAN WINDBREAKER HOODIE M

CORE

#### ACTION SHELLS

LIGHT AIR RIPSTOP

ADJUSTED FIT™  
SIZES: XS-XXL  
WEIGHT: 202 g



NEW N3689 WARM OLIVE      N0247 BLACK

### MIV10805 - PARMELAN HYBRID HOODIE M

EXT

#### THERMAL LAYERS

MICRO GRID LIGHT FLEECE  
LIGHT AIR RIPSTOP

ADJUSTED FIT™  
SIZES: XS-XXL  
WEIGHT: 340 g



N0247 BLACK      NEW N0110 SHADOW BLUE/  
GRANITE      NEW N0109 GROVE/HEMP

### MIV11146 - SENECA LIGHT FLEECE HOODIE M

NEW BASIC 

#### THERMAL LAYERS

AERO WAFFLE FLEECE  
X.C.S. RECYCLED PA STRETCH

ADJUSTED FIT™  
SIZES: XS-XXL  
WEIGHT: 340 g



N7094 GRAPE LEAF      N3689 WARM OLIVE      N2987 GRANITE      N0247 BLACK

### MIV11145 - SENECA LIGHT FLEECE JKT M

NEW BASIC 

#### THERMAL LAYERS

AERO WAFFLE FLEECE  
X.C.S. RECYCLED PA STRETCH

ADJUSTED FIT™  
SIZES: XS-XXL  
WEIGHT: 320 g



N9545 GROVE      N6548 SHADOW BLUE      N2987 GRANITE      N0247 BLACK

### MIV11144 - SENECA LIGHT FLEECE VEST M

NEW BASIC 

#### THERMAL LAYERS

AERO WAFFLE FLEECE  
X.C.S. RECYCLED PA STRETCH

ADJUSTED FIT™  
SIZES: XS-XXL  
WEIGHT: 250 g



N6548 SHADOW BLUE      N0247 BLACK

**MIV10448 - UBIC LIGHTGRID JKT M**

**BASIC**

**THERMAL LAYERS**

POLARTEC MINI GRID RECYCLED

ADJUSTED FIT™

SIZES: XS-XXL

WEIGHT: 284 g



N7094  
GRAPE LEAF

**NEW** N6548  
SHADOW BLUE

**NEW** N2987  
GRANITE

N0247  
BLACK

**NEW** N0117  
SHADOW BLUE/  
HEMP

**NEW** N0066  
PISTACHIO

**MIV11154 - PARMELAN LIGHT FLEECE JKT M**

**NEW** **CORE**

**THERMAL LAYERS**

MICRO GRID LIGHT FLEECE

ADJUSTED FIT™

SIZES: XS-XL

WEIGHT: 280 g



N3170  
ICON BLUE

N2987  
GRANITE

N0247  
BLACK

N0102  
HEMP

N0062  
GALAXY

**MIV10803 - PARMELAN LIGHT FLEECE PO M**

**BASIC**

**THERMAL LAYERS**

MICRO GRID LIGHT FLEECE

ADJUSTED FIT™

SIZES: XS-XXL

WEIGHT: 208 g



**NEW** N3689  
WARM OLIVE

N0247  
BLACK

**NEW** N0113  
GRANITE/GRANITE

N0062  
GALAXY

**MIV11212 - SENECA SHIRT LS M**

**NEW** **BASIC**

**TRANSFER LAYERS**

DRYNAMIC™ STRETCH LIGHT  
RIPSTOP

RELAXED FIT™

SIZES: XS-XXL

WEIGHT: 220 g



N7094  
GRAPE LEAF

N0066  
PISTACHIO

**MIV11216 - SENECA SHIRT SS M**

**NEW** **CORE**

**TRANSFER LAYERS**

DRYNAMIC™ STRETCH LIGHT  
RIPSTOP

RELAXED FIT™

SIZES: XS-XXL

WEIGHT: 170 g



N7094  
GRAPE LEAF

N2987  
GRANITE

N0247  
BLACK

N0066  
PISTACHIO

**MIV10797 - UBIC WOOL TS SS M**

**CORE**

**TRANSFER LAYERS**

MIX WOOL & PES -  
50% WO, 50% PES

ADJUSTED FIT™

SIZES: XS-XXL

WEIGHT: 140 g



**NEW** N6548  
SHADOW BLUE

N2987  
GRANITE

**NEW** N0066  
PISTACHIO

**MIV11219 - SENECA TS LS UV M**

**NEW** **CORE**

**TRANSFER LAYERS**

DRYNAMIC™ UV 40+

ADJUSTED FIT™

SIZES: XS-XXL

WEIGHT: 124 g



N7094  
GRAPE LEAF

N6548  
SHADOW BLUE

N0066  
PISTACHIO

N0020  
WHITE

**MIV10801 - SENECA TS SS M**

**CORE**

**TRANSFER LAYERS**

DRYNAMIC

ADJUSTED FIT™

SIZES: XS-XXL

WEIGHT: 94 g



N7094 GRAPE LEAF    **NEW** N6548 SHADOW BLUE    **NEW** N3689 WARM OLIVE    N2987 GRANITE    N0247 BLACK    **NEW** N0066 PISTACHIO    **NEW** N0062 GALAXY

**MIV10860 - SENECA POLO M**

**BASIC**

**TRANSFER LAYERS**

DRYNAMIC HEATHER GRID KNIT

ADJUSTED FIT™

SIZES: XS-XXL

WEIGHT: 128 g



N7317 SAPHIR    N7094 GRAPE LEAF    N7085 ANTHRACITE GREY    **NEW** N0102 HEMP

**MIV11159 - PARMELAN FRESH TS SS M**

**NEW CORE**

**TRANSFER LAYERS**

POLARTEC® POWER FRESH DELTA MESH

ADJUSTED FIT™

SIZES: XS-XL

WEIGHT: 115 g



N6548 SHADOW BLUE    N0103 STONES    N0066 PISTACHIO

**MIV11217 - UBIC LIGHT TREK TS SS M**

**NEW BASIC**

**TRANSFER LAYERS**

DELTA MESH

ADJUSTED FIT™

SIZES: XS-XXL

WEIGHT: 110 g



N8014 FOGGY DEW    N7094 GRAPE LEAF    N6548 SHADOW BLUE    N3689 WARM OLIVE    N0247 BLACK    N0102 HEMP    N0062 GALAXY

**MIV10464 - UBIC LIGHT TS SS M**

**BASIC**

**TRANSFER LAYERS**

DELTA MESH

ADJUSTED FIT™

SIZES: XS-XXL

WEIGHT: 110 g



N7094 GRAPE LEAF    **NEW** N3689 WARM OLIVE    N3170 ICON BLUE    N0247 BLACK    **NEW** N0103 STONES

**MIV10210 - SENECA GTX 2L PANT M**

**EXT**

**PROTECTIVE SHELLS**

GORE-TEX 750 EPE 2L PES RECYCLED

REGULAR FIT™

SIZES: XS-XXL

WEIGHT: 566 g



N0247 BLACK

**MIV10428 - UBIC STR ZIP OFF PT M**

**BASIC**

**TRANSFER LAYERS**

PA STRETCH

REGULAR FIT™

SIZES: 36-48

WEIGHT: 350 g



N7094 GRAPE LEAF    **NEW** N6548 SHADOW BLUE    N2987 GRANITE    N0247 BLACK    **NEW** N0102 HEMP

**MIV10429 - UBIC STRETCH PANT M**

**BASIC**

**TRANSFER LAYERS**

PA STRETCH

REGULAR FIT™

SIZES: 36-48

WEIGHT: 300 g



N7094 GRAPE LEAF    **NEW** N6548 SHADOW BLUE    N2987 GRANITE    N0247 BLACK    **NEW** N0102 HEMP

**MIV10430 - UBIC STRETCH SHORT M**

**BASIC**

**TRANSFER LAYERS**

PA STRETCH

REGULAR FIT™

SIZES: 36-48

WEIGHT: 198 g



N7094 GRAPE LEAF    **NEW** N6548 SHADOW BLUE    N0247 BLACK    **NEW** N0102 HEMP

**MIV10431 - UBIC SHORT M**

**BASIC**

**TRANSFER LAYERS**

PA STRETCH

REGULAR FIT™

SIZES: 36-48

WEIGHT: 174 g



N7094 GRAPE LEAF    N2987 GRANITE    N0247 BLACK    **NEW** N0102 HEMP

**MIV11149 - UBIC TECH PANT M**

**NEW** **CORE**

**TRANSFER LAYERS**

X.C.S. RECYCLED PA STRETCH

ADJUSTED FIT™

SIZES: XS-XXL

WEIGHT: 280 g



N9545 GROVE    N7094 GRAPE LEAF    N0247 BLACK

**MIV11147 - UBIC TECH SHORT M**

**NEW** **CORE**

**TRANSFER LAYERS**

X.C.S. RECYCLED PA STRETCH

ADJUSTED FIT™

SIZES: XS-XXL

WEIGHT: 170 g



N9545 GROVE    N7094 GRAPE LEAF    N0247 BLACK

**MIV11153 - PARMELAN STRETCH PANT M**

**NEW** **CORE**

**TRANSFER LAYERS**

DRYANMIC LIGHT 4 WAY STRETCH

ADJUSTED FIT™

SIZES: XS-XXL

WEIGHT: 280 g



N9545 GROVE    N7094 GRAPE LEAF    N6548 SHADOW BLUE    N2987 GRANITE    N0247 BLACK    N0102 HEMP

**MIV11156 - PARMELAN STRETCH SHORT M**

**NEW** **CORE**

**TRANSFER LAYERS**

DRYANMIC LIGHT 4 WAY STRETCH

ADJUSTED FIT™

SIZES: XS-XXL

WEIGHT: 210 g



N9545 GROVE    N7094 GRAPE LEAF    N6548 SHADOW BLUE    N2987 GRANITE    N0247 BLACK    N0102 HEMP

## TRAIL

### MIV11170 - INTENSE PRO 3L JKT M

**NEW** **EXT**

#### PROTECTIVE SHELLS

DRYEDGE™ PRO RIPSTOP 3L - 35K/60K - PA

ADJUSTED FIT™  
SIZES: XS-XXL  
WEIGHT: 150 g



N6548  
SHADOW BLUE

### MIV11171 - INTENSE 2.5L JKT M

**NEW** **CORE**

#### PROTECTIVE SHELLS

DRYEDGE™ STRETCH RIPSTOP 2.5L - 20K/20K - PA RECYCLED

ADJUSTED FIT™  
SIZES: XS-XXL  
WEIGHT: 190 g



N7764  
FLAME

N0247  
BLACK

N0069  
GRANITE/SAPHIR

### MIV11175 - INTENSE 2.5L PANT

**NEW** **CORE**

#### PROTECTIVE SHELLS

DRYEDGE™ STRETCH RIPSTOP 2.5L - 20K/20K - PA RECYCLED

ACTIVE FIT™  
SIZES: XXS-XXL  
WEIGHT: 178 g



N7317  
SAPHIR

N0247  
BLACK

### MIV10358 - INTENSE WINDBREAKER JKT M

**EXT** **☼**

#### ACTION SHELLS

WINDLIGHT STRETCH RIPSTOP

ADJUSTED FIT™  
SIZES: XS-XXL  
WEIGHT: 138 g



**NEW** N2987  
GRANITE

**NEW** N0247  
BLACK

### MIV10362 - INTENSE TS LS M

**CORE**

#### TRANSFER LAYERS

DRYNAMIC MICRO MESH  
DRYNAMIC LIGHT RECYCLED

ADJUSTED FIT™  
SIZES: XS-XXL  
WEIGHT: 140 g



**NEW** N7317  
SAPHIR

**NEW** N0132  
GRANITE PRINT

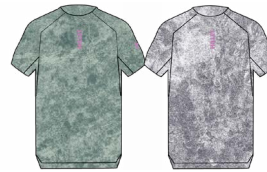
### MIV11169 - INTENSE PRO LIGHT TS M

**NEW** **EXT**

#### TRANSFER LAYERS

DRYNAMIC LIGHT WARP & WEFT

ADJUSTED FIT™  
SIZES: XS-XXL  
WEIGHT: 56 g



N0126  
BOTTLE PRINT

N0120  
SHADOW BLUE  
PRINT

### MIV10366 - INTENSE LIGHT TS SS M

**CORE**

#### TRANSFER LAYERS

DRYNAMIC MICRO MESH  
DRYNAMIC LIGHT RECYCLED

ADJUSTED FIT™  
SIZES: XS-XXL  
WEIGHT: 114 g



N8014  
FOGGY DEW

**NEW** N7764  
FLAME

N0247  
BLACK

**NEW** N0132  
GRANITE PRINT

**NEW** N0062  
GALAXY

### MIV10368 - INTENSE ESSENTIAL TS SS M

**BASIC**

#### TRANSFER LAYERS

DRYNAMIC LIGHT RECYCLED

ADJUSTED FIT™  
SIZES: XS-XXL  
WEIGHT: 90 g



**NEW** N8014  
FOGGY DEW

**NEW** N7764  
FLAME

**NEW** N7317  
SAPHIR

N2987  
GRANITE

N0247  
BLACK

**NEW** N0062  
GALAXY

N0033  
PEPPER

**NEW** N0032  
MAUVE ORCHID

**MIV11174 - INTENSE LIGHT TANK M**

**NEW** **EXT**

**TRANSFER LAYERS**  
DRYNAMIC LIGHT RECYCLED

ADJUSTED FIT™  
SIZES: XS-XXL  
WEIGHT: 71 g



N7317  
SAPHIR

N0132  
GRANITE PRINT

**MIV10813 - INTENSE JOGGER PANT M**

**EXT**

**TRANSFER LAYERS**  
DRYNAMIC™ ULTRA LIGHT  
STRETCH PA REC

ADJUSTED FIT™  
SIZES: XXS-XXL  
WEIGHT: 210 g



N0247  
BLACK

**MIV11173 - INTENSE SHORT TIGHT M**

**NEW** **CORE**

**TRANSFER LAYERS**  
CARVICO REVOLUTIONAL ECO

NEXT TO SKIN FIT™  
SIZES: XS-XXL  
WEIGHT: 118 g



N7317  
SAPHIR

N0247  
BLACK

**MIV11168 - INTENSE 2/1 SHORT M**

**NEW** **CORE**

**TRANSFER LAYERS**  
AEROLIGHT DRY  
DRYNAMIC™ RECYCLED SQUARE  
ULTRA LIGHT

REGULAR FIT™  
SIZES: XS-XXL  
WEIGHT: 130 g



N0247  
BLACK

N0062  
GALAXY

**MIV11166 - INTENSE PRO LIGHT SHORT M 5"**

**NEW** **EXT**

**TRANSFER LAYERS**  
AEROLIGHT DRY

ADJUSTED FIT™  
SIZES: XS-XXL  
WEIGHT: 88 g



N4238  
BOTTLE

N6548  
SHADOW BLUE

**MIV11167 - INTENSE LIGHT SHORT M 5"**

**NEW** **CORE**

**TRANSFER LAYERS**  
AEROLIGHT DRY

ADJUSTED FIT™  
SIZES: XS-XXL  
WEIGHT: 60 g



N2987  
GRANITE

N0247  
BLACK

N0033  
PEPPER

**MIV10373 - INTENSE ESSENTIAL SH M 7"**

**BASIC**

**TRANSFER LAYERS**  
DRYNAMIC™ RECYCLED  
STRETCH WOVEN

ADJUSTED FIT™  
SIZES: XS-XXL  
WEIGHT: 92 g



**NEW** N7764  
FLAME

**NEW** N7317  
SAPHIR

**NEW** N2987  
GRANITE

N0247  
BLACK

## TRANSVERSE

### MIV11103 - EVOLE LIGHT 700 HD M

**CORE**

#### THERMAL LAYERS

TORAY® LIGHT RIP STOP  
INSULATION: K DRY™ 90/10  
DUCK DOWN RDS FP 700

#### ADJUSTED FIT™

SIZES: XS-XXL  
WEIGHT: 412 g  
DOWN WEIGHT: 110 g



N7094  
GRAPE LEAF

N6548  
SHADOW BLUE

N0247  
BLACK

### MIV11104 - EVOLE LIGHT 700 JKT M

**CORE**

#### THERMAL LAYERS

TORAY® LIGHT RIP STOP  
INSULATION: K DRY™ 90/10  
DUCK DOWN RDS FP 700

#### ADJUSTED FIT™

SIZES: XS-XXL  
WEIGHT: 369 g  
DOWN WEIGHT: 90 g



N7094  
GRAPE LEAF

N6548  
SHADOW BLUE

N0247  
BLACK

### MIV11105 - EVOLE LIGHT 700 VEST M

**CORE**

#### THERMAL LAYERS

TORAY® LIGHT RIP STOP  
INSULATION: K DRY™ 90/10  
DUCK DOWN RDS FP 700

#### ADJUSTED FIT™

SIZES: XS-XXL  
WEIGHT: 269 g  
DOWN WEIGHT: 50 g



N6548  
SHADOW BLUE

N0247  
BLACK

### MIV10956 - EVOLE ULTRA LIGHT 800 HD M

**EXT**

#### THERMAL LAYERS

ULTRALIGHT DOWNPROOF DWR  
INSULATION: K DRY™ 90/10 GREY  
GOOSE DOWN RDS FP 800

#### ADJUSTED FIT™

SIZES: XS-XXL  
WEIGHT: 214 g  
DOWN WEIGHT: 43.5 g



N2987  
GRANITE

N0247  
BLACK

### MIV10276 - DRYNOMIC WARM 1/2 ZIP M

**CORE**

#### TECHNICAL UNDERWEAR

DRYNOMIC WARM -  
38% PA, 31% PES, 31% MEW

#### NEXT TO SKIN FIT™

SIZES: S/M-XXL  
WEIGHT: 200 g



N7085  
ANTHRACITE GREY

### MIV9917 - DRYNOMIC WARM LS TEE M

**CORE**

#### TECHNICAL UNDERWEAR

DRYNOMIC WARM -  
38% PA, 31% PES, 31% MEW

#### NEXT TO SKIN FIT™

SIZES: S/M-XXL  
WEIGHT: 175 g



N7085  
ANTHRACITE GREY

### MIV9926 - DRYNOMIC WARM TIGHT M

**CORE**

#### TECHNICAL UNDERWEAR

DRYNOMIC WARM -  
31% PES, 31% PA, 31% MEW, 7% EA

#### NEXT TO SKIN FIT™

SIZES: S/M-XXL  
WEIGHT: 154 g



N7085  
ANTHRACITE GREY

### MIV9915 - DRYNOMIC SOFT LS 1/2 ZIP M

**BASIC**

#### TECHNICAL UNDERWEAR

DRYNOMIC SOFT -  
65% PA, 35% LYO

#### NEXT TO SKIN FIT™

SIZES: S/M-XXL  
WEIGHT: 204 g



N0247  
BLACK

### MIV9916 - DRYNOMIC SOFT LS TEE M

**BASIC**

#### TECHNICAL UNDERWEAR

DRYNOMIC SOFT -  
65% PA, 35% LYO

#### NEXT TO SKIN FIT™

SIZES: S/M-XXL  
WEIGHT: 173 g



N0247  
BLACK

### MIV11117 - DRYNOMIC SOFT TIGHT M

**BASIC**

#### TECHNICAL UNDERWEAR

DRYNOMIC SOFT -  
62% PA, 33% LYO, 5% EA

#### NEXT TO SKIN FIT™

SIZES: S/M-L/XL  
WEIGHT: 155 g



N0247  
BLACK

### MIV10890 - DRYNOMIC LIGHT TS M

**CORE**

#### TECHNICAL UNDERWEAR

DRYNOMIC LIGHT -  
89% PES, 11% EA

#### ADJUSTED FIT™

SIZES: XS-XXL  
WEIGHT: 134 g



N0020  
WHITE

EVERYDAY / TRAVEL

MIV11137 - CHAMONIX SWEAT FZIP M

NEW CORE

**THERMAL LAYERS**  
ORGANIC COTTON FRENCH TERRY

REGULAR FIT™  
SIZES: XS-XXL  
WEIGHT: 650 g



N8014  
FOGGY DEW

N0194  
NAVY

MIV11127 - CHAMONIX SWEAT HOODIE M

NEW BASIC

**THERMAL LAYERS**  
ORGANIC COTTON FRENCH TERRY

REGULAR FIT™  
SIZES: XS-XXL  
WEIGHT: 640 g



N8014  
FOGGY DEW

N0194  
NAVY

MIV11136 - CHAMONIX JH TS SS M

NEW CORE

**TRANSFER LAYERS**  
ORGANIC COTTON 220GR

RELAXED FIT™  
SIZES: XS-XXL  
WEIGHT: 215 g



N9545  
GROVE

N8014  
FOGGY DEW

N0247  
BLACK

N0066  
PISTACHIO

MIV11135 - CHAMONIX 1921 TS SS M

NEW CORE

**TRANSFER LAYERS**  
ORGANIC COTTON 220GR

RELAXED FIT™  
SIZES: XS-XXL  
WEIGHT: 215 g



N7094  
GRAPE LEAF

N2987  
GRANITE

N0020  
WHITE

MIV11133 - CHAMONIX STICKER TS SS M

NEW BASIC

**TRANSFER LAYERS**  
ORGANIC COTTON 160GR

REGULAR FIT™  
SIZES: XS-XXL  
WEIGHT: 180 g



N9545  
GROVE

N6548  
SHADOW BLUE

N0247  
BLACK

N0102  
HEMP

MIV11318 - CHAMONIX ROCK TS SS M

NEW BASIC

**TRANSFER LAYERS**  
ORGANIC COTTON 180GR

REGULAR FIT™  
SIZES: XS-XXL  
WEIGHT: 190 g



N8014  
FOGGY DEW

N7094  
GRAPE LEAF

N0247  
BLACK

MIV10761 - CIMAÏ CLIMB TS SS M

BASIC

**TRANSFER LAYERS**  
ORGANIC COTTON 180GR

REGULAR FIT™  
SIZES: XS-XXL  
WEIGHT: 190 g



N8014  
FOGGY DEW

N7094  
GRAPE LEAF

NEW N0066  
PISTACHIO

MIV11134 - CHAMONIX EMBLEM TS SS M

NEW BASIC

**TRANSFER LAYERS**  
ORGANIC COTTON 160GR

REGULAR FIT™  
SIZES: XS-XXL  
WEIGHT: 180 g



N9545  
GROVE

N6548  
SHADOW BLUE

N3689  
WARM OLIVE

N2987  
GRANITE

N0020  
WHITE

**MIV10425 - CIMAÏ DENIM PANT M**

**CORE**

**TRANSFER LAYERS**  
DENIM STRETCH

REGULAR FIT™  
SIZES: 36-48  
WEIGHT: 512 g



N0395  
DARK DENIM

**MIV11033 - CHAMONIX JOG PANT M**

**BASIC**

**TRANSFER LAYERS**  
THERMAL SPACER KNIT

ADJUSTED FIT™  
SIZES: XS-XXL  
WEIGHT: 470 g



N0247  
BLACK

**MIV11138 - CHAMONIX JOG SHORT M**

**NEW BASIC**

**TRANSFER LAYERS**  
THERMAL SPACER KNIT

ADJUSTED FIT™  
SIZES: XS-XXL  
WEIGHT: 315 g



N0247  
BLACK

**MIV11140 - CHAMONIX DAILY PANT M**

**NEW BASIC**

**TRANSFER LAYERS**  
DRYNAMIC DAILY TECH PA  
RECYCLED

REGULAR FIT™  
SIZES: XS-XXL  
WEIGHT: 365 g



N0247  
BLACK



N0102  
HEMP

**MIV11139 - CHAMONIX DAILY SHORT M**

**NEW CORE**

**TRANSFER LAYERS**  
DRYNAMIC DAILY TECH PA  
RECYCLED

REGULAR FIT™  
SIZES: XS-XXL  
WEIGHT: 245 g



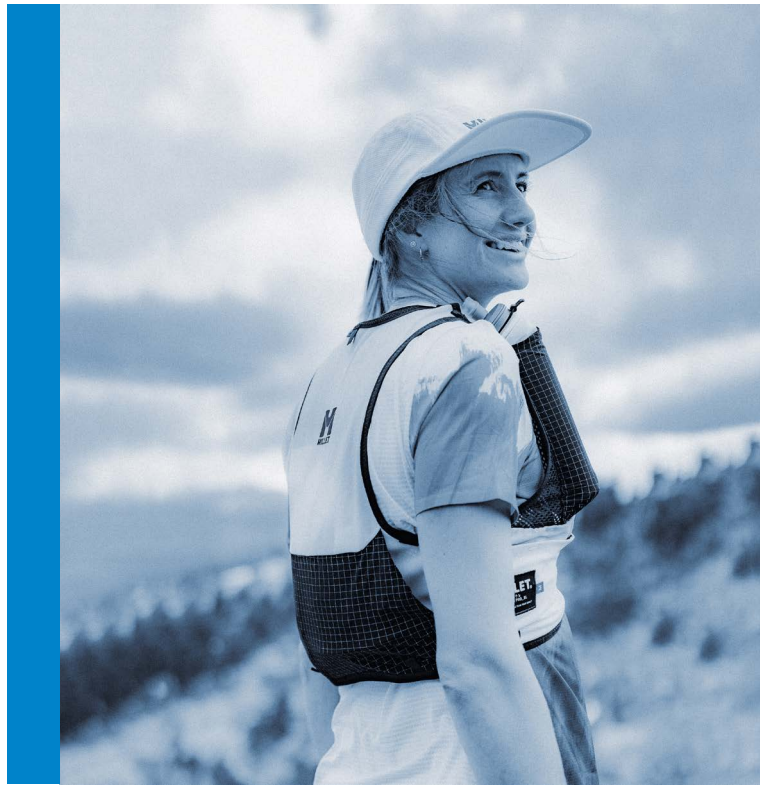
N0247  
BLACK

N0102  
HEMP



# WOMEN'S APPAREL

- MOUNTAINEERING
- TREKKING/HIKING
- TRAIL
- TRANSVERSE
- EVERYDAY/TRAVEL



## MOUNTAINEERING

### MIV10546 - KAMET GTX JKT W

CORE

#### PROTECTIVE SHELLS

GORE-TEX PLAIN 70D EPE 3L PA RECYCLED

REGULAR FIT™  
SIZES: XS-XL  
WEIGHT: 375 g



NEW F0104  
MINT GREEN

F0076  
WINTER HAZE/  
SAPHIR

F0064  
AQUATIC

### MIV10783 - KAMET XCS LIGHT HOODIE W

CORE

#### ACTION SHELLS

X.C.S. RECYCLED PA STRETCH

REGULAR FIT™  
SIZES: XS-XL  
WEIGHT: 260 g



NEW F7317  
SAPHIR

NEW F0116  
FOGGY DEW/STONES

NEW F0064  
AQUATIC

### MIV10967 - KAMET GRID HD W

CORE

#### THERMAL LAYERS

POLARTEC® POWERGRID HEAVY RECYCLED

ADJUSTED FIT™  
SIZES: XS-XL  
WEIGHT: 342 g



NEW F0116  
FOGGY DEW/STONES

NEW F0100  
FLOWER

F0051  
SAPHIR/FOGGY DEW

### MIV10966 - KAMET GRID JKT W

CORE

#### THERMAL LAYERS

POLARTEC® POWERGRID HEAVY RECYCLED

ADJUSTED FIT™  
SIZES: XS-XL  
WEIGHT: 301 g



NEW F0103  
STONES

NEW F0100  
FLOWER

F0078  
AQUATIC/SAPHIR

### MIV10465 - KAMET TS LS W

EXT

#### TRANSFER LAYERS

POLARTEC® POWERDRY SQUARE

ADJUSTED FIT™  
SIZES: XS-XL  
WEIGHT: 130 g



NEW F0103  
STONES

NEW F0064  
AQUATIC

**MIV10091 - FUSION TS SS W**

**CORE**

**TRANSFER LAYERS**

POLARTEC® POWERDRY  
SQUARE

ADJUSTED FIT™

SIZES: XS-XL  
WEIGHT: 61 g



F8014  
FOGGY DEW

F7317  
SAPHIR

**NEW F0104**  
MINT GREEN

**NEW F0103**  
STONES

**NEW F0100**  
FLOWER

**NEW F0099**  
POP MELON

F0064  
AQUATIC

**MIV10764 - CIMAĪ NATURAL TS SS W**

**CORE**

**TRANSFER LAYERS**

SMART-BLEND™ ECOVERO™ -  
65% PES, 35% VI

REGULAR FIT™

SIZES: XS-XL  
WEIGHT: 122 g



**NEW F8014**  
FOGGY DEW

**NEW F0104**  
MINT GREEN

**NEW F0099**  
POP MELON

**NEW F0064**  
AQUATIC

**MIV10766 - CIMAĪ COLLAB SPORTS BRA W**

**EXT**

**TRANSFER LAYERS**

CONSTELLATION PRINT  
CARVICO COLORADO SUBLIMEE

NEXT TO SKIN FIT™

SIZES: XS-XL  
WEIGHT: 86 g



**NEW F0104**  
MINT GREEN

**NEW F0064**  
AQUATIC

**MIV10782 - KAMET XCS LIGHT PANT W**

**CORE**

**ACTION SHELLS**

X.C.S. RECYCLED PA STRETCH

ADJUSTED FIT™

SIZES: XS-XL  
WEIGHT: 240 g



**NEW F7317**  
SAPHIR

**NEW F0247**  
BLACK

**MIV10830 - CIMAĪ POLY PT W**

**CORE**

**TRANSFER LAYERS**

X.C.S. RECYCLED PA STRETCH

ADJUSTED FIT™

SIZES: XS-XL  
WEIGHT: 250 g



F7317  
SAPHIR

**NEW F0102**  
HEMP

**MIV10784 - KAMET XCS LIGHT SHORT W**

**CORE**

**ACTION SHELLS**

X.C.S. RECYCLED PA STRETCH

ADJUSTED FIT™

SIZES: XS-XL  
WEIGHT: 140 g



**NEW F7317**  
SAPHIR

**NEW F0247**  
BLACK

**MIV10768 - CIMAĪ POLY SHORT W**

**CORE**

**TRANSFER LAYERS**

X.C.S. RECYCLED PA STRETCH

ADJUSTED FIT™

SIZES: XS-XL  
WEIGHT: 145 g



**NEW F7317**  
SAPHIR

**NEW F0102**  
HEMP

## TREKKING / HIKING

### MIV10934 - UBIC GTX 3L JKT W

CORE

#### PROTECTIVE SHELLS

GORE-TEX 75D EPE 3L PES  
RECYCLED

ADJUSTED FIT™  
SIZES: XS-XL  
WEIGHT: 360 g



F0247  
BLACK

F0064  
AQUATIC

### MIV10933 - UBIC GTX 2L JKT W

BASIC

#### PROTECTIVE SHELLS

GORE-TEX 75D EPE 2L PES  
RECYCLED

ADJUSTED FIT™  
SIZES: XS-XL  
WEIGHT: 390 g



F7317  
SAPHIR

F0013  
WINTER HAZE /  
ROPE

### MIV11150 - PARMELAN 2,5L JKT W

NEW EXT

#### PROTECTIVE SHELLS

DRYEDGE STRETCH PLAIN  
20K/20K 2,5L PES

ADJUSTED FIT™  
SIZES: XS-XL  
WEIGHT: 200 g



F0121  
SHADOW BLUE/  
STONES

F0064  
AQUATIC

### MIV10809 - SENECA STORM 3L JKT W

CORE

#### PROTECTIVE SHELLS

DRYEDGE PLAIN 75D 20K/20K  
3L PES RECYCLED

ADJUSTED FIT™  
SIZES: XS-XL  
WEIGHT: 400 g



NEW F6548  
SHADOW BLUE

F0013  
WINTER HAZE /  
ROPE

### MIV10810 - SENECA 2,5L JKT W

BASIC

#### PROTECTIVE SHELLS

DRYEDGE MICRO RIPSTOP 50D  
10K/10K 2,5L PES RECYCLED

ADJUSTED FIT™  
SIZES: XS-XL  
WEIGHT: 285 g



F7317  
SAPHIR

F0116  
FOGGY DEW/STONES

F0064  
AQUATIC

NEW F0104  
MINT GREEN

NEW F0099  
POP MELON

### MIV10806 - PARMELAN WINDBREAKER HOODIE W

CORE

#### ACTION SHELLS

LIGHT AIR RIPSTOP

ADJUSTED FIT™  
SIZES: XS-XL  
WEIGHT: 145 g



NEW F6548  
SHADOW BLUE

NEW F0064  
AQUATIC

### MIV11189 - PARMELAN HYBRID HOODIE W

NEW EXT

#### THERMAL LAYERS

LIGHT AIR RIPSTOP  
MICRO GRID LIGHT FLEECE

ADJUSTED FIT™  
SIZES: XS-XL  
WEIGHT: 270 g



F6548  
SHADOW BLUE

F0064  
AQUATIC

### MIV11158 - SENECA LIGHT FLEECE HOODIE W

NEW BASIC

#### THERMAL LAYERS

AERO WAFFLE FLEECE  
RET MESH

ADJUSTED FIT™  
SIZES: XS-XL  
WEIGHT: 290 g



F6548  
SHADOW BLUE

F0100  
FLOWER

F0064  
AQUATIC

### MIV11157 - SENECA LIGHT FLEECE JKT W

NEW BASIC

#### THERMAL LAYERS

AERO WAFFLE FLEECE

ADJUSTED FIT™  
SIZES: XS-XL  
WEIGHT: 270 g



F6548  
SHADOW BLUE

F0100  
FLOWER

F0064  
AQUATIC

### MIV10452 - UBIC LIGHTGRID JKT W

BASIC

#### THERMAL LAYERS

POLARTEC MINI GRID RECYCLED

REGULAR FIT™  
SIZES: XS-XL  
WEIGHT: 284 g



F7317  
SAPHIR

NEW F0103  
STONES

F0075  
FOGGY DEW/ROPE

NEW F0064  
AQUATIC

**MIV11152 - PARMELAN LIGHT FLEECE JKT W**

**NEW** **CORE**

**THERMAL LAYERS**  
MICRO GRID LIGHT FLEECE

ADJUSTED FIT™  
SIZES: XS-XL  
WEIGHT: 240 g



F014 FOGGY DEW    F6548 SHADOW BLUE    F0104 MINT GREEN    F0099 POP MELON    F0064 AQUATIC

**MIV10804 - PARMELAN LIGHT FLEECE PO W**

**CORE**

**THERMAL LAYERS**  
MICRO GRID LIGHT FLEECE

ADJUSTED FIT™  
SIZES: XS-XL  
WEIGHT: 174 g



**NEW** F014 FOGGY DEW    **NEW** F0099 POP MELON

**MIV11161 - SENECA SHIRT LS W**

**NEW** **BASIC**

**TRANSFER LAYERS**  
DRYDYNAMIC™ STRETCH LIGHT  
RIPSTOP

REGULAR FIT™  
SIZES: XS-XL  
WEIGHT: 210 g



F014 FOGGY DEW    F0100 FLOWER

**MIV10798 - UBIK WOOL TS SS W**

**CORE**

**TRANSFER LAYERS**  
MIX WOOL & PES - 50% WO,  
50% PES

ADJUSTED FIT™  
SIZES: XS-XL  
WEIGHT: 123 g



F0247 BLACK    **NEW** F0100 FLOWER    F0064 AQUATIC

**MIV10800 - SENECA TS LS UV W**

**CORE**

**TRANSFER LAYERS**  
DRYDYNAMIC™ UV 40+

ADJUSTED FIT™  
SIZES: XS-XL  
WEIGHT: 102 g



**NEW** F0103 STONES    **NEW** F0100 FLOWER    **NEW** F0064 AQUATIC    **NEW** F0020 WHITE

**MIV10802 - SENECA TS SS W**

**CORE**

**TRANSFER LAYERS**  
DRYDYNAMIC

RELAXED FIT™  
SIZES: XS-XL  
WEIGHT: 78 g



**NEW** F6548 SHADOW BLUE    **NEW** F0104 MINT GREEN    **NEW** F0100 FLOWER    **NEW** F0099 POP MELON    **NEW** F0064 AQUATIC

**MIV11165 - PARMELAN FRESH TS SS W**

**NEW** **CORE**

**TRANSFER LAYERS**  
CONSTELLATION PRINT  
POLARTEC® POWER FRESH  
DELTA MESH

ADJUSTED FIT™  
SIZES: XS-XL  
WEIGHT: 70 g



F014 FOGGY DEW    F0104 MINT GREEN    F0099 POP MELON

**MIV11160 - PARMELAN FRESH TANK W**

**NEW** **CORE**

**TRANSFER LAYERS**  
CONSTELLATION PRINT  
POLARTEC® POWER FRESH  
DELTA MESH

ADJUSTED FIT™  
SIZES: XS-XL  
WEIGHT: 60 g



F014 FOGGY DEW    F0099 POP MELON

**MIV11218 - UBIC LIGHT TS SS W**

**NEW** **BASIC**

**TRANSFER LAYERS**  
CONSTELLATION PRINT  
DELTA MESH

ADJUSTED FIT™  
SIZES: XS-XL  
WEIGHT: 95 g



F014 FOGGY DEW    F7317 SAPHIR    F0104 MINT GREEN    F0100 FLOWER    F0099 POP MELON    F0064 AQUATIC

**MIV10432 - UBIC STR ZIP OFF PT W**

**BASIC**

**TRANSFER LAYERS**

REGULAR FIT™  
SIZES: 34-46  
WEIGHT: 353 g



**NEW** F7317 SAPHIR    **NEW** F0247 BLACK    **NEW** F0103 STONES    **NEW** F0102 HEMP

**MIV10433 - UBIC STRETCH PANT W**

**BASIC**

**TRANSFER LAYERS**

PA STRETCH  
REGULAR FIT™  
SIZES: 34-46  
WEIGHT: 282 g



**NEW** F7317 SAPHIR    **NEW** F0247 BLACK    **NEW** F0103 STONES    **NEW** F0102 HEMP    **NEW** F0064 AQUATIC

**MIV10434 - UBIC STRETCH 3/4 PANT W**

**BASIC**

**TRANSFER LAYERS**

PA STRETCH

REGULAR FIT™  
SIZES: 34-46  
WEIGHT: 236 g



**NEW** F7317 SAPHIR    **NEW** F0247 BLACK    **NEW** F0103 STONES    **NEW** F0102 HEMP

**MIV10435 - UBIC STRETCH SHORT W**

**BASIC**

**TRANSFER LAYERS**

PA STRETCH

REGULAR FIT™  
SIZES: 34-46  
WEIGHT: 177 g



**NEW** F7317 SAPHIR    **NEW** F0247 BLACK    **NEW** F0103 STONES    **NEW** F0102 HEMP    **NEW** F0064 AQUATIC

**MIV10834 - PARMELAN STR PANT W**

**CORE**

**TRANSFER LAYERS**  
DRYANMIC LIGHT 4 WAY  
STRETCH

ADJUSTED FIT™  
SIZES: XS-XL  
WEIGHT: 230 g



**NEW** F3172 ROPE    **NEW** F0247 BLACK    **NEW** F6548 SHADOW BLUE    **NEW** F0064 AQUATIC

**MIV10836 - PARMELAN STR SHORT W**

**CORE**

**TRANSFER LAYERS**  
DRYANMIC LIGHT 4 WAY  
STRETCH

ADJUSTED FIT™  
SIZES: XS-XL  
WEIGHT: 127 g



**NEW** F3172 ROPE    **NEW** F0247 BLACK    **NEW** F6548 SHADOW BLUE    **NEW** F0064 AQUATIC

## TRAIL

### MIV11181 - INTENSE PRO 3L JKT W

**NEW** **EXT**

#### PROTECTIVE SHELLS

DRYEDGE™ PRO RIPSTOP 3L -  
35K/60K - PA

REGULAR FIT™  
SIZES: XS-XL  
WEIGHT: 136 g



F6548  
SHADOW BLUE

### MIV11182 - INTENSE 2.5L JKT W

**NEW** **CORE**

#### PROTECTIVE SHELLS

DRYEDGE™ STRETCH RIPSTOP  
2.5L - 20K/20K - PA RECYCLED

REGULAR FIT™  
SIZES: XS-XL  
WEIGHT: 178 g



F0116  
FOGGY DEW/STONES

F0064  
AQUATIC

### MIV10375 - INTENSE WINDBREAKER JKT W

**EXT**

#### ACTION SHELLS

WINDLIGHT STRETCH RIPSTOP

ADJUSTED FIT™  
SIZES: XS-XL  
WEIGHT: 127 g



**NEW** F9301  
FOGGY DEW/BLACK

**NEW** F0064  
AQUATIC

### MIV10379 - INTENSE TS LS W

**CORE**

#### TRANSFER LAYERS

DRYNAMIC MICRO MESH  
DRYNAMIC LIGHT RECYCLED

ADJUSTED FIT™  
SIZES: XS-XL  
WEIGHT: 116 g



**NEW** F0064  
AQUATIC

**NEW** F0020  
WHITE

### MIV11180 - INTENSE PRO LIGHT TS W

**NEW** **EXT**

#### TRANSFER LAYERS

DRYNAMIC LIGHT WARP & WEFT

REGULAR FIT™  
SIZES: XS-XL  
WEIGHT: 44 g



F0126  
BOTTLE PRINT

F0120  
SHADOW BLUE  
PRINT

### MIV10383 - INTENSE LIGHT TS SS W

**CORE**

#### TRANSFER LAYERS

DRYNAMIC MICRO MESH  
DRYNAMIC LIGHT RECYCLED

ADJUSTED FIT™  
SIZES: XS-XL  
WEIGHT: 82 g



**NEW** F0136  
MINT GREEN PRINT

**NEW** F0103  
STONES

**NEW** F0100  
FLOWER

**NEW** F0099  
POP MELON

### MIV10385 - INTENSE ESSENTIAL TS SS W

**BASIC**

#### TRANSFER LAYERS

DRYNAMIC LIGHT RECYCLED

ADJUSTED FIT™  
SIZES: XS-XL  
WEIGHT: 70 g



**NEW** F6548  
SHADOW BLUE

**NEW** F0100  
FLOWER

**NEW** F0099  
POP MELON

**NEW** F0064  
AQUATIC

**NEW** F0020  
WHITE

### MIV10384 - INTENSE LIGHT TANK W

**EXT**

#### TRANSFER LAYERS

DRYNAMIC LIGHT RECYCLED

NEXT TO SKIN FIT™  
SIZES: XS-XL  
WEIGHT: 56 g



**NEW** F0136  
MINT GREEN PRINT

**NEW** F0099  
POP MELON

### MIV11185 - INTENSE CROP TOP W

**NEW** **EXT**

#### TRANSFER LAYERS

CARVICO REVOLUTIONAL ECO

NEXT TO SKIN FIT™  
SIZES: XS-XL  
WEIGHT: 80 g



F6548  
SHADOW BLUE

### MIV10971 - INTENSE TIGHT W

**CORE**

#### TRANSFER LAYERS

ITALIAN RECYCLED POLYAMIDE  
KNIT

NEXT TO SKIN FIT™  
SIZES: XS-XL  
WEIGHT: 200 g



F0247  
BLACK

**MIV11178 - INTENSE 2/1 SHORT W**

**NEW** **CORE**

**TRANSFER LAYERS**

AEROLIGHT DRY  
DRYNAMIC™ RECYCLED SQUARE  
ULTRA LIGHT

ADJUSTED FIT™  
SIZES: XS-XL  
WEIGHT: 128 g



F0247  
BLACK

F0064  
AQUATIC

**MIV11176 - INTENSE PRO LIGHT SHORT W 5"**

**NEW** **EXT**

**TRANSFER LAYERS**

AEROLIGHT DRY

ADJUSTED FIT™  
SIZES: XS-XL  
WEIGHT: 84 g



F6548  
SHADOW BLUE

F4238  
BOTTLE

**MIV11177 - INTENSE LIGHT SHORT W 5"**

**NEW** **CORE**

**TRANSFER LAYERS**

AEROLIGHT DRY

ADJUSTED FIT™  
SIZES: XS-XL  
WEIGHT: 58 g



F0247  
BLACK

F0103  
STONES

F0064  
AQUATIC

**MIV10390 - INTENSE ESSENTIAL SH W 5"**

**BASIC**

**TRANSFER LAYERS**

DRYNAMIC™ RECYCLED  
STRETCH WOVEN

RELAXED FIT™  
SIZES: XS-XL  
WEIGHT: 64 g



F0247  
BLACK

**NEW** F0099  
POP MELON

**NEW** F0064  
AQUATIC

## TRANSVERSE

### MIV11107 - EVOLE LIGHT 700 HD W

CORE

#### THERMAL LAYERS

TORAY® LIGHT RIP STOP  
INSULATION: K DRY™ 90/10  
DUCK DOWN RDS FP 700

ADJUSTED FIT™

SIZES: XS-XL  
WEIGHT: 340 g  
DOWN WEIGHT: 87 g



F6548  
SHADOW BLUE

F4090  
HOLLY BERRY

F0247  
BLACK

### MIV11108 - EVOLE LIGHT 700 JKT W

CORE

#### THERMAL LAYERS

TORAY® LIGHT RIP STOP  
INSULATION: K DRY™ 90/10  
DUCK DOWN RDS FP 700

ADJUSTED FIT™

SIZES: XS-XL  
WEIGHT: 314 g  
DOWN WEIGHT: 80 g



F3172  
ROPE

F0247  
BLACK

F0064  
AQUATIC

### MIV10277 - DRYNAMIC WARM 1/2 ZIP W

CORE

#### TECHNICAL UNDERWEAR

DRYNAMIC WARM -  
38% PA, 31% PES, 31% MEW

NEXT TO SKIN FIT™

SIZES: XS/S-L/XL  
WEIGHT: 172 g



F7085  
ANTHRACITE GREY

### MIV9921 - DRYNAMIC WARM LS TEE W

CORE

#### TECHNICAL UNDERWEAR

DRYNAMIC WARM -  
38% PA, 31% PES, 31% MEW

NEXT TO SKIN FIT™

SIZES: XS/S-L/XL  
WEIGHT: 160 g



F7085  
ANTHRACITE GREY

### MIV9927 - DRYNAMIC WARM TIGHT W

CORE

#### TECHNICAL UNDERWEAR

DRYNAMIC WARM -  
31% PES, 31% PA, 31% MEW, 7% EA

NEXT TO SKIN FIT™

SIZES: XS/S-L/XL  
WEIGHT: 146 g



F7085  
ANTHRACITE GREY

### MIV9919 - DRYNAMIC SOFT LS 1/2 ZIP W

BASIC

#### TECHNICAL UNDERWEAR

DRYNAMIC SOFT -  
65% PA, 35% LYO

NEXT TO SKIN FIT™

SIZES: XS/S-L/XL  
WEIGHT: 168 g



F0247  
BLACK

### MIV9920 - DRYNAMIC SOFT LS TEE W

BASIC

#### TECHNICAL UNDERWEAR

DRYNAMIC SOFT -  
65% PA, 35% LYO

NEXT TO SKIN FIT™

SIZES: XS/S-L/XL  
WEIGHT: 160 g



F0247  
BLACK

### MIV11118 - DRYNAMIC SOFT TIGHT W

BASIC

#### TECHNICAL UNDERWEAR

DRYNAMIC SOFT -  
62% PA, 33% LYO, 5% EA

NEXT TO SKIN FIT™

SIZES: XS/S-L/XL  
WEIGHT: 140 g



F0247  
BLACK

### MIV10891 - DRYNAMIC LIGHT TS W

CORE

#### TECHNICAL UNDERWEAR

DRYNAMIC LIGHT -  
89% PES, 11% EA

ADJUSTED FIT™

SIZES: XS-XL  
WEIGHT: 112 g



N0020  
WHITE

## EVERYDAY / TRAVEL

### MIV11125 - CHAMONIX SWEAT FZIP W

NEW CORE

#### THERMAL LAYERS

ORGANIC COTTON FRENCH TERRY

RELAXED FIT™  
SIZES: XS-XL  
WEIGHT: 630 g



F8014  
FOGGY DEW

F0194  
NAVY

### MIV11130 - CHAMONIX JH TS SS W

NEW CORE

#### TRANSFER LAYERS

ORGANIC COTTON INTERLOCK  
230GR

REGULAR FIT™  
SIZES: XS-XL  
WEIGHT: 210 g



F8014  
FOGGY DEW

F0099  
POP MELON

F0064  
AQUATIC

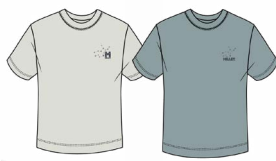
### MIV11128 - CHAMONIX RELAX TS SS W

NEW CORE

#### TRANSFER LAYERS

CONSTELLATION PRINT  
ORGANIC COTTON INTERLOCK  
230GR

RELAXED FIT™  
SIZES: XS-XL  
WEIGHT: 190 g



F8014  
FOGGY DEW

F0064  
AQUATIC

### MIV11129 - CHAMONIX DRAWING TS SS W

NEW BASIC

#### TRANSFER LAYERS

ORGANIC COTTON 160GR

RELAXED FIT™  
SIZES: XS-XL  
WEIGHT: 160 g



F6548  
SHADOW BLUE

F0100  
FLOWER

F0099  
POP MELON

F0064  
AQUATIC

### MIV11132 - CHAMONIX DAILY PANT W

NEW CORE

#### TRANSFER LAYERS

DRYNAMIC DAILY TECH PA  
RECYCLED

RELAXED FIT™  
SIZES: XS-XL  
WEIGHT: 310 g



F0102  
HEMP

### MIV11131 - CHAMONIX DAILY SHORT W

NEW CORE

#### TRANSFER LAYERS

DRYNAMIC DAILY TECH PA  
RECYCLED

RELAXED FIT™  
SIZES: XS-XL  
WEIGHT: 215 g



F0102  
HEMP



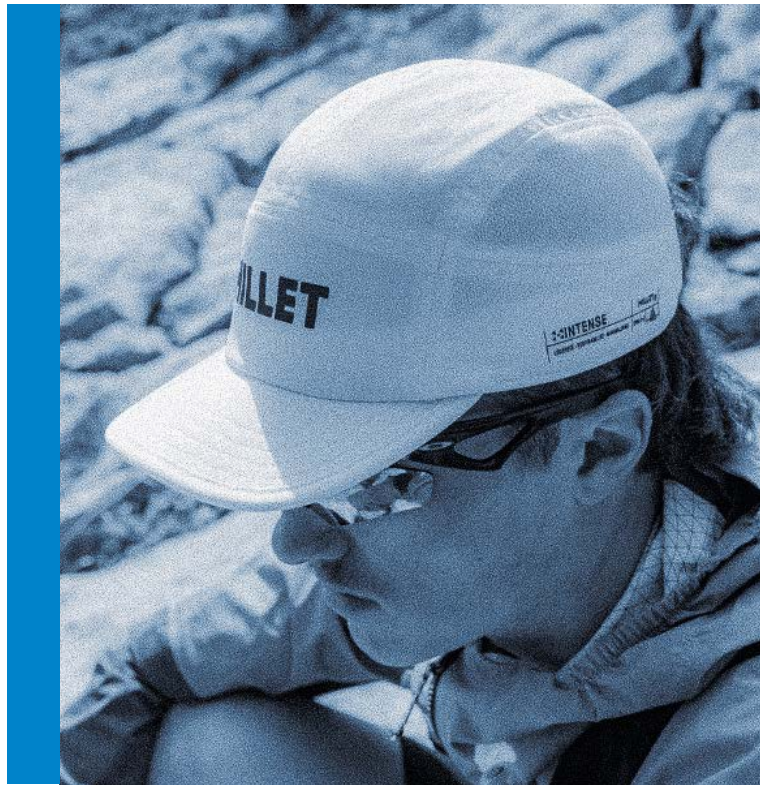
SIZE GUIDES

# ESSENTIALS

HEADWEAR

GLOVES

SOCKS



## HEADWEAR

### MIV10769 - CHAMONIX TRI CAP

CORE

HEADWEAR  
DRYNAMIC TECH LIGHT

SIZES: ONE SIZE  
WEIGHT: 53 g



N7317  
SAPHIR

NEW N0103  
STONES

N0020  
WHITE

### MIV10853 - CHAMONIX HAT M

CORE

HEADWEAR  
DRYNAMIC PA CANVAS

SIZES: M-L  
WEIGHT: 133 g



N9904  
DORITE

NEW N8014  
FOGGY DEW

N0247  
BLACK

### MIV10856 - CHAMONIX TRUCKER CAP

CORE

HEADWEAR  
DRYNAMIC PA CANVAS  
DRYNAMIC LIGHT MESH

SIZES: ONE SIZE  
WEIGHT: 90 g



N7094  
GRAPE LEAF

N3172  
ROPE

N0247  
BLACK

NEW N0102  
HEMP

### MIV10855 - CHAMONIX BASEBALL CAP

BASIC

HEADWEAR  
DRYNAMIC PA CANVAS

SIZES: ONE SIZE  
WEIGHT: 97 g



N9904  
DORITE

N8014  
FOGGY DEW

N0247  
BLACK

**MIV11122 - INTENSE SHIELD CAP**

**NEW** **EXT**

**HEADWEAR**

STRETCH UV & COOL FEELING  
WOVEN

SIZES: ONE SIZE  
WEIGHT: 70 g



N0194  
NAVY

N0103  
STONES

N0032  
MAUVE ORCHID

**MIV10857 - INTENSE CAP**

**CORE**

**HEADWEAR**

ULTRALIGHT RIPSTOP  
DYNAMIC LIGHT MESH

SIZES: ONE SIZE  
WEIGHT: 55 g



N0247  
BLACK

**NEW** N0104  
MINT GREEN

**NEW** N0066  
PISTACHIO

N0045  
PEPPER/PAPRIKA

N0020  
WHITE

**MIV11210 - INTENSE LIGHT CAP**

**NEW** **BASIC**

**HEADWEAR**

ULTRALIGHT PERFORATED MESH  
ULTRALIGHT RIPSTOP

SIZES: ONE SIZE  
WEIGHT: 47 g



N4238  
BOTTLE

N0194  
NAVY

N0103  
STONES

N0101  
POP PINK

**MIV11119 - KAMET VISOR M**

**NEW** **CORE**

**HEADWEAR**

ULTRALIGHT RIPSTOP

SIZES: ONE SIZE  
WEIGHT: 40 g



N0247  
BLACK

N0103  
STONES

N0085  
CLEMATIS BLUE

**MIV11211 - UBIC SHIELD CAP**

**NEW** **BASIC**

**HEADWEAR**

LIGHT UV DIAMOND JACQUARD

SIZES: M-L  
WEIGHT: 85 g



N7094  
GRAPE LEAF

N2987  
GRANITE

N0247  
BLACK

**MIV11123 - UBIC SHIELD BOB**

**NEW** **CORE**

**HEADWEAR**

LIGHT UV DIAMOND JACQUARD

SIZES: M-L  
WEIGHT: 85 g



N7094  
GRAPE LEAF

N0247  
BLACK

N0001  
ICE GREY

**MIV10821 - SENECA CAP**

**BASIC**

**HEADWEAR**

DRYDYNAMIC PA CANVAS

SIZES: ONE SIZE  
WEIGHT: 48 g



**NEW** N7094  
GRAPE LEAF

**NEW** N2987  
GRANITE

N0247  
BLACK

### MIV10832 - SENECA RAINPROOF HAT

**BASIC**

#### HEADWEAR

DRYEDGE MICRO RIPSTOP 50D  
10K/10K 2,5L PES RECYCLED

SIZES: M-L  
WEIGHT: 53 g



N7094  
GRAPE LEAF

**NEW** N6548  
SHADOW BLUE

N2987  
GRANITE

N0247  
BLACK

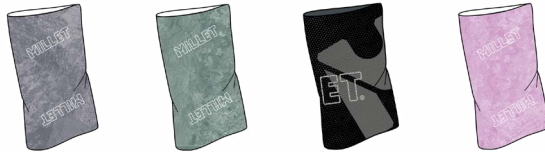
### MIV10859 - CHAMONIX LOGO NECKWARMER

**BASIC**

#### HEADWEAR

DRYDYNAMIC KNIT

SIZES: ONE SIZE  
WEIGHT: 36 g



**NEW** N6548  
SHADOW BLUE

**NEW** N4238  
BOTTLE

N0247  
BLACK

**NEW** N0101  
POP PINK

### MIV10514 - CHAMONIX BANDANA COLLAB

**EXT** 

#### HEADWEAR

LIGHT COTTON

SIZES: ONE SIZE  
WEIGHT: 26 g



**NEW** N4528  
BLACK/WHITE

**NEW** N8014  
FOGGY DEW

### MIV11121 - INTENSE ICE BANDANA

**NEW** **EXT**

#### HEADWEAR

STRETCH UV & COOL FEELING  
WOVEN  
SPONGE SWEATBAND

SIZES: ONE SIZE  
WEIGHT: 49 g



N0103  
STONES

### MIV11245 - INTENSE ARM SLEEVES

**NEW** **EXT**

#### ARM SLEEVES

ULTRALIGHT STRETCH FLEECE

WEIGHT: 24 g



N0247  
BLACK

### MIV10637 - CHAMONIX BELT

**BASIC**

#### BELT

BELT FABRIC

WEIGHT: 88 g



N0247  
BLACK

## GLOVES

### MIV10656 - TRILOGY ICON PRO GTX GLOVE

CORE

#### GLOVES

RHINE FLEX  
SUEDE LEATHER  
INSULATION: PRIMALOFT® GOLD  
CROSS CORE™ 100GR

REGULAR FIT™  
SIZES: XS-XL  
WEIGHT: 160 g



N0247  
BLACK

### MIV10713 - M WHITE GTX INFINIUM GLOVE

CORE

#### GLOVES

GORE-TEX INFINIUM GLOVES  
SQUARE  
GOATSKIN LEATHER

ACTIVE FIT™  
SIZES: XS-XL  
WEIGHT: 60 g



N0247  
BLACK

### MIV10714 - M WHITE GTX INFINIUM MITT

EXT

#### GLOVES

GORE-TEX INFINIUM GLOVES  
SQUARE  
INSULATION: PRIMALOFT®  
THERMO PLUME PES RECYCLED

ACTIVE FIT™  
SIZES: XS-XL  
WEIGHT: 70 g



N0247  
BLACK

### MIV10715 - WARM STRETCH GLOVE

CORE

#### GLOVES

THERMOSTRETCH  
GOATSKIN LEATHER

REGULAR FIT™  
SIZES: XS-XL  
WEIGHT: 68 g



N0247  
BLACK

### MIV8114 - M TOUCH GLOVE

BASIC

#### GLOVES

THERMOFLEECE STRETCH

ACTIVE FIT™  
SIZES: XS-XXL  
WEIGHT: 59 g



N0247  
BLACK

## SOCKS

### MIV10885 - TRILOGY ICON CREW SOCKS

CORE

#### SOCKS

80% WO  
20% PA

SIZES: 36/38-45/47  
WEIGHT: 61 g



N2987  
GRANITE

N0247  
BLACK

### MIV10788 - INTENSE CREW SOCKS M

CORE

#### SOCKS

97% PA  
3% EA

SIZES: 39/41-45/47  
WEIGHT: 43 g



NEW N3172  
ROPE

N3170  
ICON BLUE

### MIV10789 - INTENSE CREW SOCKS W

CORE

#### SOCKS

97% PA  
3% EA

SIZES: 36/38-39/41  
WEIGHT: 43 g



N9332  
PURPLE VELVET

N0020  
WHITE

### MIV10793 - UBIC CREW SOCKS M

CORE

#### SOCKS

52% PA  
23% WO  
23% PES  
2% EA

SIZES: 39/41-45/47  
WEIGHT: 50 g



N7317  
SAPHIR

N7094  
GRAPE LEAF

### MIV10794 - UBIC CREW SOCKS W

CORE

#### SOCKS

52% PA  
23% WO  
23% PES  
2% EA

SIZES: 36/38-39/41  
WEIGHT: 50 g



N9332  
PURPLE VELVET

N3171  
CORONET BLUE

### MIV10790 - PARMELAN CREW SOCKS

BASIC

#### SOCKS

52% PA  
29% PES  
16% VI  
3% EA

SIZES: 36/38-45/47  
WEIGHT: 48 g



N4237  
VANILLA CREAM

N0247  
BLACK

### MIV10792 - PARMELAN QUARTER SOCKS M

BASIC

#### SOCKS

54% PA  
29% PES  
15% VI  
2% EA

SIZES: 39/41-45/47  
WEIGHT: 34 g



NEW N7094  
GRAPE LEAF

N0247  
BLACK

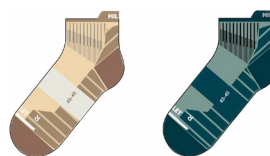
### MIV10791 - PARMELAN QUARTER SOCKS W

BASIC

#### SOCKS

54% PA  
29% PES  
15% VI  
2% EA

SIZES: 36/38-39/41  
WEIGHT: 34 g

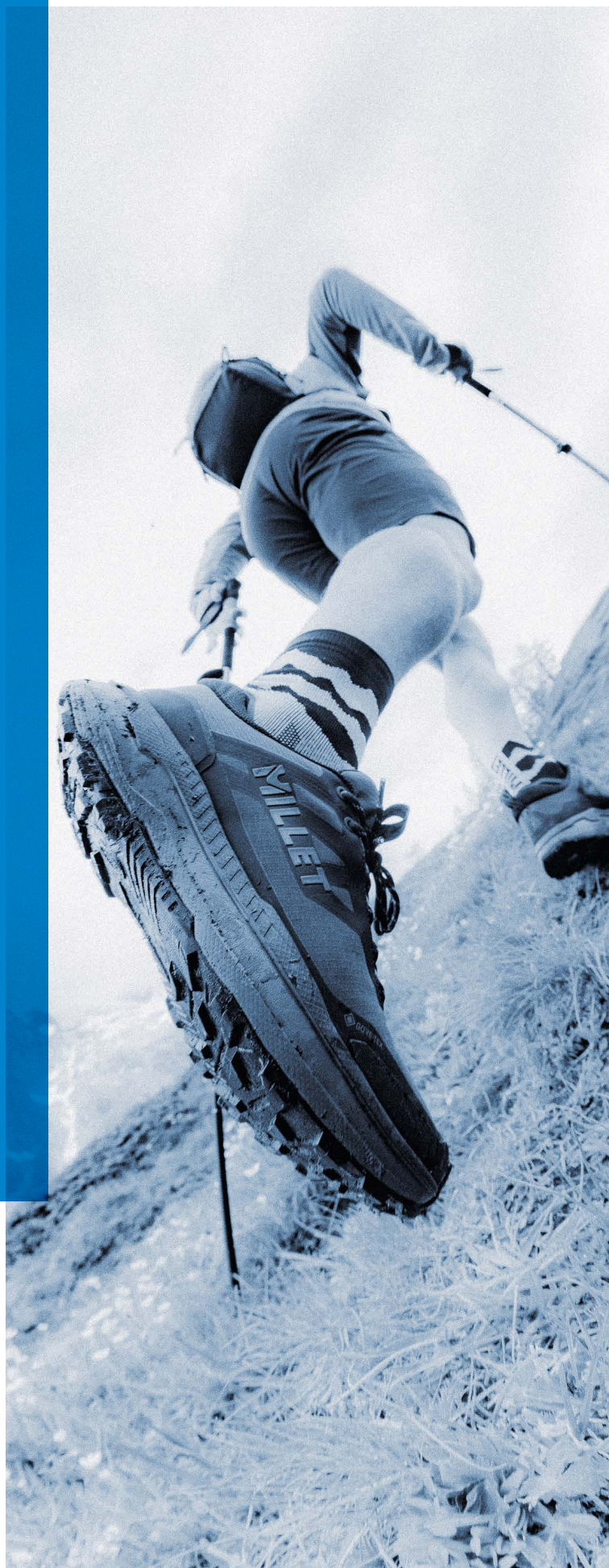


N4237  
VANILLA CREAM

NEW N0064  
AQUATIC

# EQUIPMENT

- 55 BACKPACKS
- 64 SLEEPING BAGS
- 67 FOOTWEAR
- 68 CLIMBING SHOES
- 70 ACCESSORIES

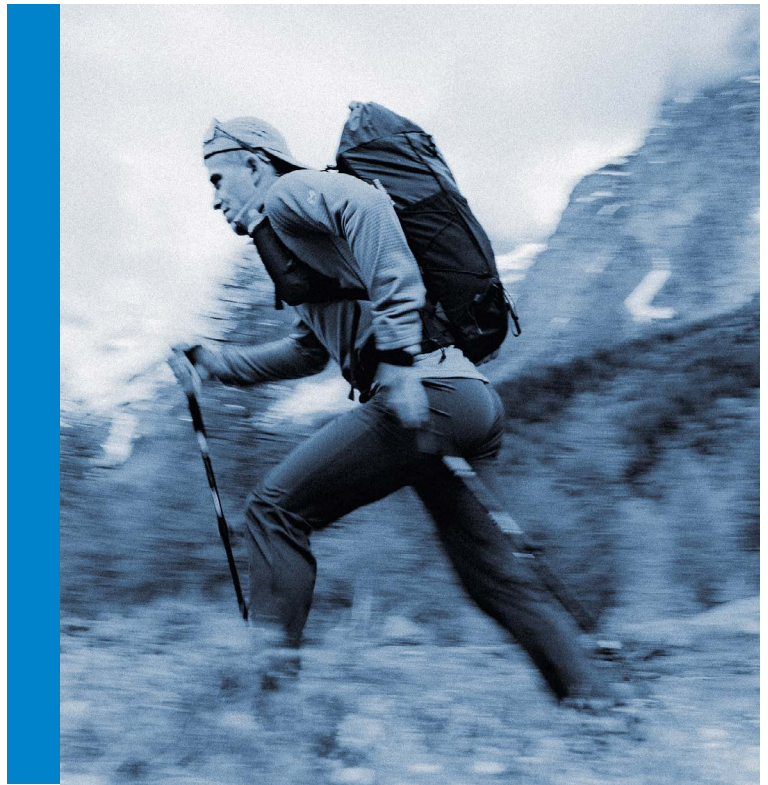




SIZE GUIDES

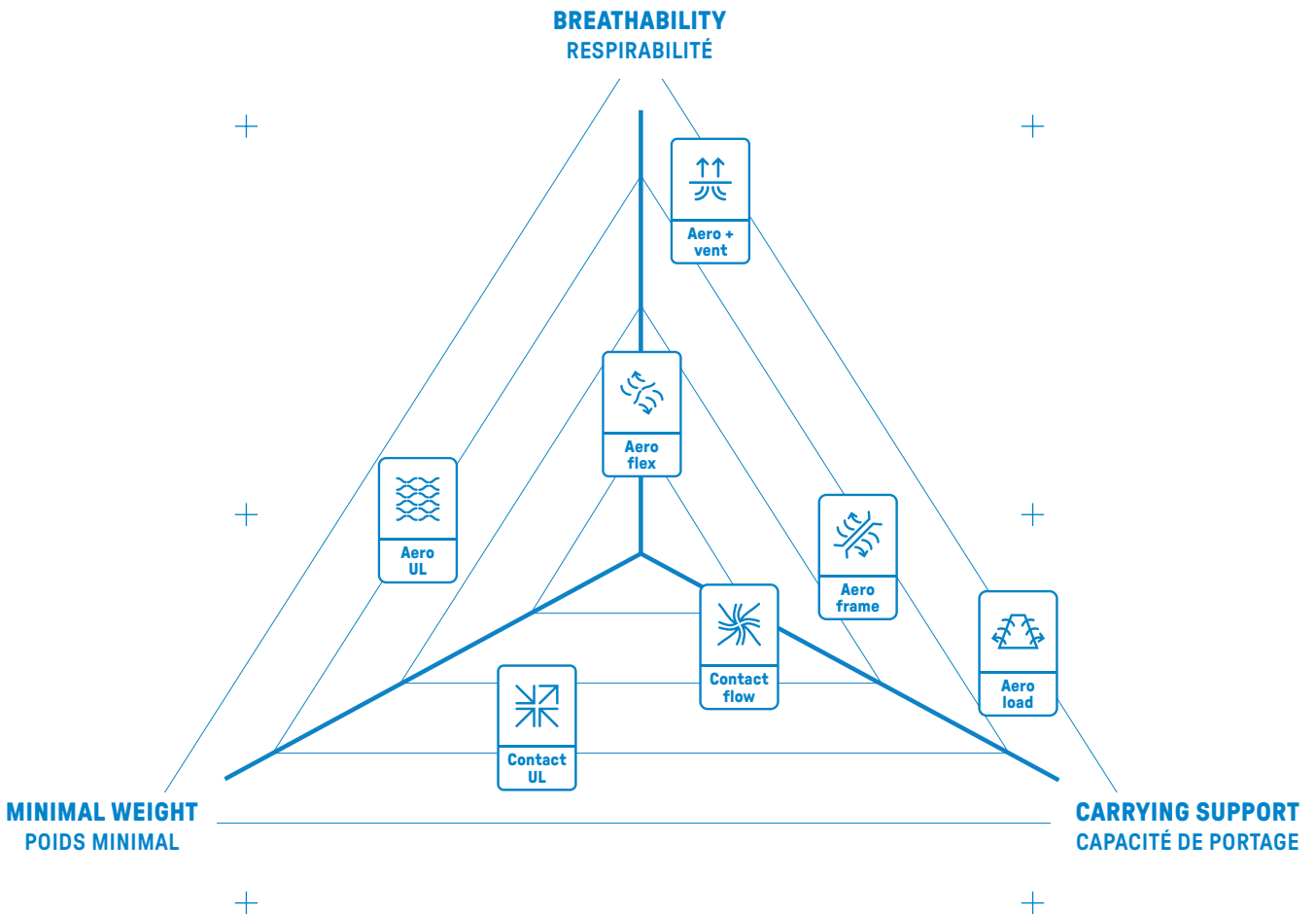
# BACKPACKS

- MOUNTAINEERING
- TREKKING/HIKING
- TRAIL
- TRANSVERSE
- EVERYDAY/TRAVEL



100 YEARS OF FIELD EXPERTISE, DELIVERING CARRYING COMFORT DESIGNED FOR EVERY NEED.

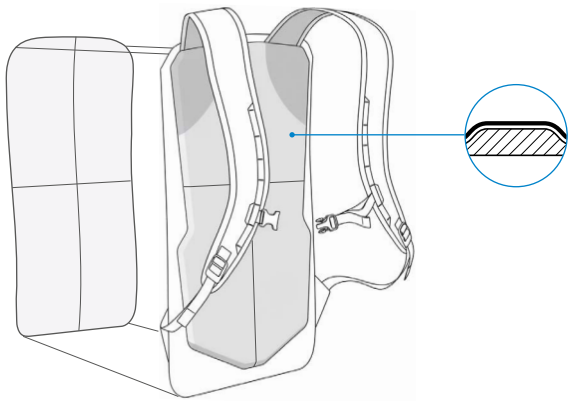
100 ANS D'EXPERTISE AU PLUS PRÈS DU TERRAIN POUR UN CONFORT DE PORTAGE PENSÉ POUR TOUS.



# MILLET BACKS

## DOS MILLET

+



+



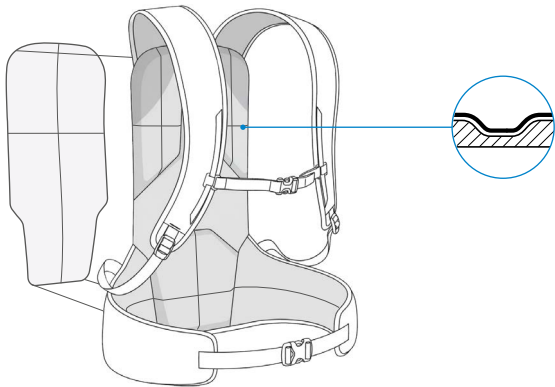
**USE: FAST & LIGHT MOUNTAINEERING  
MINIMALISM AND EFFICIENCY**

Designed for performance, this back focuses on the essentials: minimal weight, maximum reliability, and optimal comfort thanks to distributed contact points.

**USAGE : ALPINISME FAST & LIGHT  
MINIMALISME ET EFFICACITÉ**

Pensé pour la performance, ce dos mise sur les essentiels : poids réduit au maximum, fiabilité maximale, confort optimal dû à l'uniformité des zones de contact.

+



+



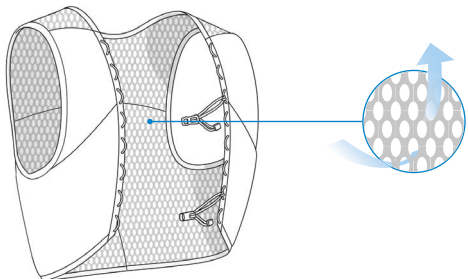
**USE: SKIING  
SUPPORT AND CUSHIONING**

Designed to support high-speed skiing, this back panel provides precise and stable support. Its thermoformed high-density EVA foam offers a smooth surface, while its closed-cell, non-perforated structure prevents snow and moisture from entering.

**USAGE : SKI  
STABILITÉ ET AMORTI**

Conçu pour accompagner les phases de vitesse en ski, ce dos assure un maintien précis et stable. Sa mousse EVA haute densité thermoformée offre une surface lisse, tandis que sa structure fermée, non perforée, empêche toute infiltration de neige et d'humidité.

+



+



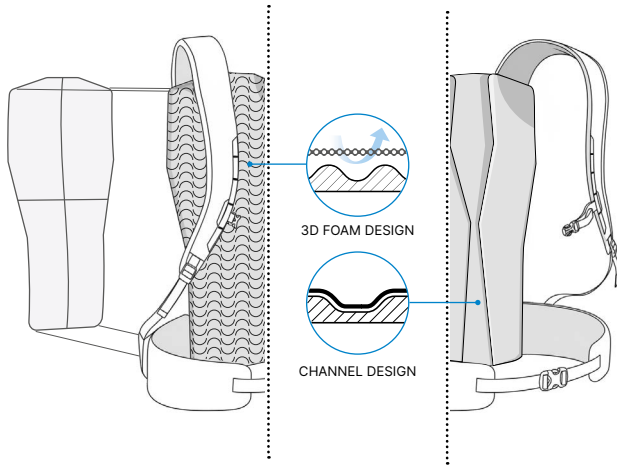
**USES: TRAIL RUNNING, SKI  
MOUNTAINEERING  
LIGHTWEIGHT AND FREEDOM OF  
MOVEMENT**

Designed for intense trail running or ski mountaineering, this backpack prioritizes maximum ventilation and flexibility so you can forget you're wearing it during activity. Its construction made of mesh fabric hugs the body while promoting breathability.

**USAGES : TRAIL, SKIMO  
LÉGÈRETÉ ET LIBERTÉ DE MOUVEMENT**  
Pensé pour les efforts intenses en trail ou en skimo, ce dos privilégie une ventilation et une souplesse maximales pour se faire oublier en action. Sa construction en maille mesh épouse le corps tout en favorisant la respirabilité.

+

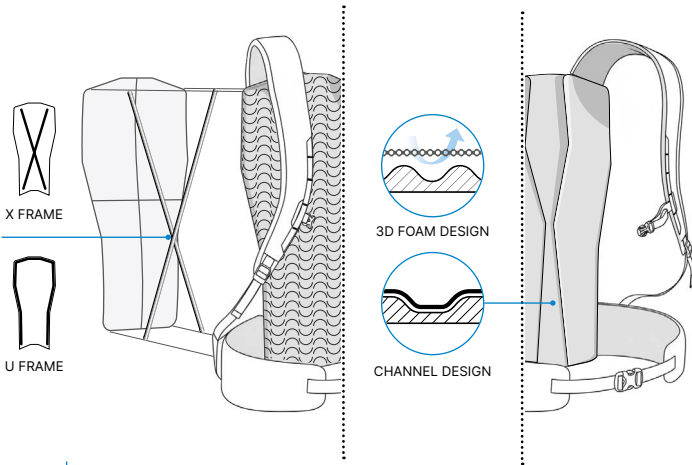
+



 **AERO flex**

**USES: MOUNTAINEERING, HIKING, SKI TOURING**  
**VENTILATION AND VERSATILITY**  
 Designed to combine flexibility, support and ventilation, this back panel offers freedom of movement and breathability. Available with perforated EVA panel or ventilation channels.

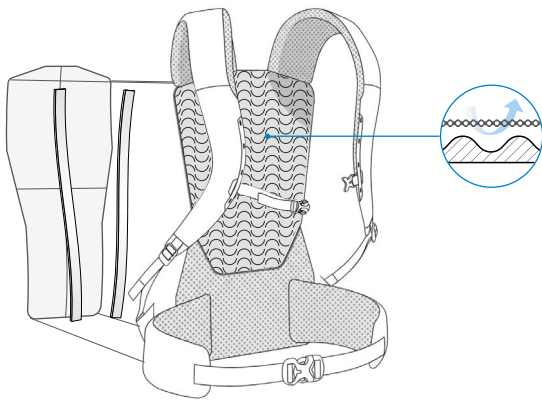
**USAGES : ALPINISME, RANDONNÉE, SKI DE RANDO**  
**VENTILATION ET POLYVALENCE**  
 Pensé pour combiner souplesse, maintien et ventilation, ce dos offre liberté de mouvement et respirabilité. Deux constructions sont disponibles : panneau EVA alvéolé ou canal de ventilation.



 **AERO frame**

**USES: TREKKING AND MOUNTAINEERING**  
**CARRYING COMFORT AND ERGONOMICS**  
 Designed for multi-day mountaineering trips, this rucksack combines enhanced rigidity with the benefits of Aero Flex technology. Available with X Frame fiberglass or U Frame aluminum frames, a wrap-around belt, and two construction options (perforated EVA panel or ventilation channel).

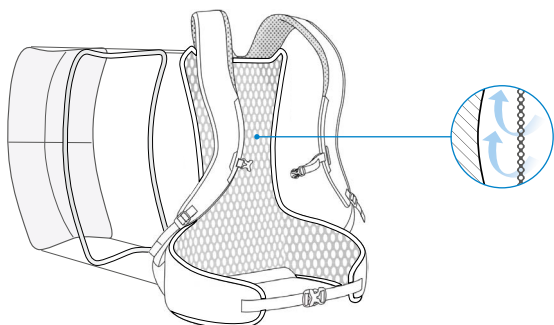
**USAGES : TREKKING ET ALPINISME**  
**CONFORT DE PORTAGE ET ERGONOMIE**  
 Pensé pour les pratiques alpines sur plusieurs jours, ce dos combine une rigidité renforcée aux bénéfices Aero Flex. Avec armatures X Frame en fibre de verre ou U Frame en aluminium, ceinture enveloppante et deux constructions disponibles (panneau EVA alvéolé ou canal de ventilation).



 **AERO load**

**USES: LONG-DISTANCE HIKING AND BACKPACKING**  
**COMFORT AND REDUCED FATIGUE**  
 Thanks to a wraparound design that ensures optimal weight distribution and stability even with heavy loads, this rucksack features a metal frame and a structured hip belt for efficient weight transfer and comfortable wear over long distances.

**USAGES : TREKKING LONGUE DUREE ET BACKPACKING**  
**CONFORT ET RÉDUCTION DE LA FATIGUE**  
 Grâce à une conception enveloppante assurant répartition optimale et stabilité même avec charges lourdes, ce dos possède une armature métallique et une ceinture structurée pour un transfert de poids efficace et un port durable sur longues distances.



 **AERO+ vent**

**USE: SUMMER TREKKING**  
**COMFORT AND VENTILATION**  
 Designed to keep you cool in hot weather, this rucksack features an aluminum frame and a tensioned construction that creates a gap between the mesh and your back for optimal ventilation and a lightweight feel all day long.

**USAGE : TREKKINGS ESTIVAUX**  
**CONFORT ET VENTILATION**  
 Pensé pour garder au frais par temps chaud, ce dos avec armature aluminium et construction tendue laisse un espace entre le filet et le dos pour une aération optimale et un port léger tout au long de la journée.



## MOUNTAINEERING

### MIS10091 - KAMET 40+

**NEW** **EXT**

#### AERO FRAME™

BACK LENGTH: S/M 41 CM - L/XL  
46 CM CM  
RECYCLED PA 400D SQUARE  
RIPSTOP

CAPACITY: 40+10 L  
SIZES: S/M-L/XL  
WEIGHT: 1180 g



N7764  
FLAME

N0247  
BLACK

### MIS10090 - KAMET 30

**NEW** **CORE**

#### AERO FRAME™

BACK LENGTH: S/M 41 CM - L/XL  
46 CM CM  
RECYCLED PA 400D SQUARE  
RIPSTOP

CAPACITY: 30 L  
SIZES: S/M-L/XL  
WEIGHT: 1050 g



N7764  
FLAME

N0247  
BLACK

N0103  
STONES

### MIS10047 - KAMET 22

**NEW** **CORE**

#### AERO FLEX™

BACK LENGTH: 46 CM  
RECYCLED PA 400D SQUARE  
RIPSTOP

CAPACITY: 22 L  
WEIGHT: 650 g



N7764  
FLAME

N0247  
BLACK

N0103  
STONES

### MIS10004 - KAMET LIGHT 25+5

**NEW** **CORE**

#### AERO FLEX™

BACK LENGTH: 46 CM  
RECYCLED PA 200D MINI  
SQUARE RIPSTOP UHMWPE

CAPACITY: 25+5 L  
WEIGHT: 680 g



N8014  
FOGGY DEW

N0247  
BLACK

### MIS10053 - KAMET LIGHT 15

**NEW** **CORE**

#### AERO FLEX™

BACK LENGTH: 43 CM  
RECYCLED PA 200D MINI  
SQUARE RIPSTOP UHMWPE

CAPACITY: 15 L  
WEIGHT: 400 g



N8014  
FOGGY DEW

N0247  
BLACK

### MIS2426 - PEUTEREY 45+10

**EXT**

#### AERO FRAME™

BACK LENGTH: 48 CM  
PA 300D DOBBY ROBIC

CAPACITY: 45+10 L  
WEIGHT: 1530 g



N0395  
DARK DENIM

N0335  
RED

### MIS2427 - PEUTEREY 35+10

**CORE**

#### AERO FRAME™

BACK LENGTH: 46 CM  
PA 300D DOBBY ROBIC

CAPACITY: 35+10 L  
WEIGHT: 1400 g



N0395  
DARK DENIM

N0335  
RED

### MIS2428 - PEUTEREY 35+10 W

**EXT**

#### AERO FRAME WOMEN'S FIT™

BACK LENGTH: 40 CM  
PA 300D DOBBY ROBIC

CAPACITY: 35+10 L  
WEIGHT: 1390 g



N0395  
DARK DENIM

## TREKKING / HIKING

### MIS2417 - UBIC 55+15

CORE

**AERO LOAD ADJUSTABLE™**  
BACK LENGTH: 46-53 CM  
RECYCLED PA 210D DIAMOND  
RIPSTOP

CAPACITY: 55+15 L  
WEIGHT: 1950 g



NEW N0247  
BLACK

NEW N0133  
HEMP/BLACK

### MIS2419 - UBIC 50+10 W

CORE

**AERO LOAD ADJUSTABLE  
WOMEN'S FIT™**  
BACK LENGTH: 40-50 CM  
RECYCLED PA 210D DIAMOND  
RIPSTOP

CAPACITY: 50+10 L  
WEIGHT: 1900 g



NEW N0134  
AQUATIC/SHADOW  
BLUE

### MIS2420 - UBIC 40

CORE

**AERO FRAME™**  
BACK LENGTH: 46 CM  
RECYCLED PA 210D DIAMOND  
RIPSTOP

CAPACITY: 40 L  
WEIGHT: 1230 g



NEW N7317  
SAPHIR

NEW N0247  
BLACK

NEW N0133  
HEMP/BLACK

NEW N3174  
BLACK/ICON BLUE

### MIS2423 - UBIC 40 W

CORE

**AERO FRAME WOMEN'S FIT™**  
BACK LENGTH: 40 CM  
RECYCLED PA 210D DIAMOND  
RIPSTOP

CAPACITY: 40 L  
WEIGHT: 1200 g



NEW N0134  
AQUATIC/SHADOW  
BLUE

NEW N7317  
SAPHIR

NEW N0152  
DARK BERRY

### MIS2421 - UBIC 35

EXT

**AERO FRAME™**  
BACK LENGTH: 46 CM  
RECYCLED PA 210D DIAMOND  
RIPSTOP

CAPACITY: 35 L  
WEIGHT: 1170 g



NEW N0247  
BLACK

### MIS2418 - UBIC 30

CORE

**AERO FRAME™**  
BACK LENGTH: 46 CM  
RECYCLED PA 210D DIAMOND  
RIPSTOP

CAPACITY: 30 L  
WEIGHT: 1190 g



NEW N7317  
SAPHIR

NEW N0247  
BLACK

NEW N0133  
HEMP/BLACK

NEW N3174  
BLACK/ICON BLUE

### MIS2424 - UBIC 30 W

CORE

**AERO FRAME WOMEN'S FIT™**  
BACK LENGTH: 40 CM  
RECYCLED PA 210D DIAMOND  
RIPSTOP

CAPACITY: 30 L  
WEIGHT: 1160 g



NEW N0134  
AQUATIC/SHADOW  
BLUE

NEW N7317  
SAPHIR

NEW N0152  
DARK BERRY

**MIS10050 - UBIC 25**

**NEW** **CORE**

**AERO FLEX™**

BACK LENGTH: 46 CM  
RECYCLED PA 210D DIAMOND  
RIPSTOP

CAPACITY: 25 L  
WEIGHT: 920 g



N7317  
SAPHIR

N0247  
BLACK

N3174  
BLACK/ICON BLUE

**MIS10080 - UBIC 25 W**

**NEW** **CORE**

**AERO FLEX WOMEN'S FIT™**

BACK LENGTH: 40 CM  
RECYCLED PA 210D DIAMOND  
RIPSTOP

CAPACITY: 25 L  
WEIGHT: 920 g



N7317  
SAPHIR

N0152  
DARK BERRY

N0064  
AQUATIC

**MIS2433 - UBIC 20**

**BASIC**

**AERO FLEX™**

BACK LENGTH: 46 CM  
RECYCLED PA 210D DIAMOND  
RIPSTOP

CAPACITY: 20 L  
WEIGHT: 610 g



**NEW** N0247  
BLACK

**NEW** N0102  
HEMP

**NEW** N0064  
AQUATIC

**NEW** N7317  
SAPHIR

**MIS10074 - SENECA AIR 50**

**NEW** **CORE**

**AERO+ VENT ADJUSTABLE™**

BACK LENGTH: 46 - 53 CM  
RECYCLED PA 200D MINI  
SQUARE RIPSTOP UHMWPE

CAPACITY: 50 L  
WEIGHT: 1480 g



N0247  
BLACK

N0135  
AQUATIC/BLACK

**MIS10073 - SENECA AIR 40**

**NEW** **CORE**

**AERO+ VENT ADJUSTABLE™**

BACK LENGTH: 46 - 53 CM  
RECYCLED PA 200D MINI  
SQUARE RIPSTOP UHMWPE

CAPACITY: 40 L  
WEIGHT: 1460 g



N0247  
BLACK

N0135  
AQUATIC/BLACK

N0133  
HEMP/BLACK

**MIS10072 - SENECA AIR 30**

**NEW** **CORE**

**AERO+ VENT ADJUSTABLE™**

BACK LENGTH: 46-53 CM  
RECYCLED PA 200D MINI  
SQUARE RIPSTOP UHMWPE

CAPACITY: 30 L  
WEIGHT: 1400 g



N0247  
BLACK

N0135  
AQUATIC/BLACK

N0133  
HEMP/BLACK

**MIS2500 - SENECA LT 28**

**NEW** **BASIC**

**AERO FLEX™**

BACK LENGTH: 46 CM  
RECYCLED PES 200D MINI  
SQUARE RIPSTOP

CAPACITY: 28 L  
WEIGHT: 680 g



N4238  
BOTTLE

N0247  
BLACK

**MIS2499 - SENECA LT 22**

**BASIC**

**AERO FLEX™**

BACK LENGTH: 46 CM  
RECYCLED PES 200D MINI  
SQUARE RIPSTOP

CAPACITY: 22 L  
WEIGHT: 640 g



N8408  
PAPRIKA

**NEW** N4238  
BOTTLE

N0247  
BLACK

**NEW** N0064  
AQUATIC

**MIS10048 - SENECA LT 15**

**NEW** **BASIC**

**AERO FLEX™**

BACK LENGTH: 46 CM  
RECYCLED PES 200D MINI  
SQUARE RIPSTOP

CAPACITY: 15 L  
WEIGHT: 460 g



N8408  
PAPRIKA

N4238  
BOTTLE

N0247  
BLACK

N0064  
AQUATIC

### MIS01301 - PARMELAN 35

EXT

#### AERO FRAME™

BACK LENGTH: S 43 / M 47 CM  
PA 100D MINI SQUARE RIPSTOP  
ROBIC UHMWPE

CAPACITY: 35 L  
SIZES: S-M  
WEIGHT: 980 g



N6365  
SILVERSTONE/BLACK

N0247  
BLACK

NEW N0142  
HEMP/GROVE

### MIS01302 - PARMELAN 25

CORE

#### AERO FRAME™

BACK LENGTH: S 43 / M 47 CM  
PA 100D MINI SQUARE RIPSTOP  
ROBIC UHMWPE

CAPACITY: 25 L  
SIZES: S-M  
WEIGHT: 880 g



N6365  
SILVERSTONE/BLACK

N0247  
BLACK

NEW N0142  
HEMP/GROVE

### MIS01328 - PARMELAN 17

CORE

#### AERO FLEX™

BACK LENGTH: 44 CM  
PA 100D MINI SQUARE RIPSTOP  
ROBIC UHMWPE

CAPACITY: 17 L  
WEIGHT: 480 g



N6365  
SILVERSTONE/BLACK

N0247  
BLACK

NEW N0142  
HEMP/GROVE

### MIS2491 - PARMELAN BELT

CORE

PA 100D MINI SQUARE RIPSTOP  
ROBIC UHMWPE

CAPACITY: 3 L  
WEIGHT: 260 g



N0247  
BLACK

NEW N0142  
HEMP/GROVE

### MIS2195 - HANANG 65+10

BASIC

#### AERO LOAD ADJUSTABLE™

BACK LENGTH: 46/53 CM  
PA 300D DOBBY ROBIC  
PA 210D DOBBY

CAPACITY: 65+10 L  
WEIGHT: 2570 g



N0247  
BLACK

### MIS2198 - HANANG 50

BASIC

#### AERO LOAD™

BACK LENGTH: 46 CM  
PA 300D DOBBY ROBIC  
PA 210D DOBBY

CAPACITY: 50 L  
WEIGHT: 1920 g



N0247  
BLACK

### MIS2199 - HANANG 40

BASIC

#### AERO LOAD™

BACK LENGTH: 46 CM  
PA 300D DOBBY ROBIC  
PA 210D DOBBY

CAPACITY: 40 L  
WEIGHT: 1240 g



N0247  
BLACK

## TRAIL

### MIS10101 - INTENSE 15

**NEW** **CORE**

BACK LENGTH: 38 CM  
RPA/SPAN - 2D MESH 180G  
DARLINGTON  
RPA 140D - DOBBY SPAN

CAPACITY: 15 L  
SIZES: 1-4  
WEIGHT: 270 g



N0247  
BLACK

N0103  
STONES

### MIS10102 - INTENSE 5

**NEW** **CORE**

BACK LENGTH: 38 CM  
RPA 140D - SPAN  
RPA 140D - DOBBY SPAN

CAPACITY: 5 L  
SIZES: 1-4  
WEIGHT: 184 g



N0247  
BLACK

N0103  
STONES

### MIS10103 - INTENSE 5 WITHOUT FLASK

**NEW** **CORE**

BACK LENGTH: 38 CM  
RPA 140D - SPAN  
RPA 140D - DOBBY SPAN

CAPACITY: 5 L  
SIZES: 1-4  
WEIGHT: 184 g



N0247  
BLACK

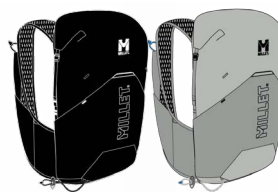
N0103  
STONES

### MIS10099 - INTENSE WILD 15+5

**NEW** **CORE**

BACK LENGTH: S/M 41 CM - L/XL 44 CM  
RPA 200D - UHMWPE 200D - RS  
3D WALL MESH

CAPACITY: 15+5 L  
SIZES: 1/2-3/4  
WEIGHT: 380 g



N0247  
BLACK

N0103  
STONES

### MIS2412 - INTENSE PRO BELT

**EXT**

DYNEEMA® ULTRA LIGHT  
STRETCH - 71% PA, 22% EA,  
7% DYN  
POWER NET

CAPACITY: 1 L  
SIZES: XS/S-XL  
WEIGHT: 85 g



**NEW** N4238  
BOTTLE

**NEW** N0247  
BLACK

### MIS2455 - INTENSE BELT

**CORE**

POWER NET  
RPA/SPAN - 2D MESH 180G  
DARLINGTON

SIZES: S/M-L/XL  
WEIGHT: 100 g



**NEW** N0144  
BLACK/ASPHALTE

**NEW** N0103  
STONES

### MIS10057 - INTENSE QUIVER

**NEW** **CORE**

RECYCLED PA 200D MINI  
SQUARE RIPSTOP UHMWPE

WEIGHT: 40 g



N0247  
BLACK

### MIS10078 - INTENSE WILD POCKET

**NEW** **CORE**

RECYCLED PA 200D MINI  
SQUARE RIPSTOP UHMWPE

CAPACITY: 2 L  
SIZES: M  
WEIGHT: 100 g



N0103  
STONES

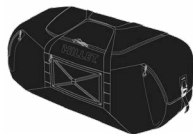
## EVERYDAY / TRAVEL

### MIS2485 - CHAMONIX DUFFLE 60+15

CORE

RECYCLED PA 420D SQUARE  
RIPSTOP TPU

CAPACITY: 60+15 L  
WEIGHT: 1450 g



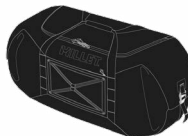
N0247  
BLACK

### MIS2484 - CHAMONIX DUFFLE 35+10

CORE

RECYCLED PA 420D SQUARE  
RIPSTOP TPU

CAPACITY: 35+10 L  
WEIGHT: 1050 g



N0247  
BLACK

### MIS2482 - CHAMONIX 15+5

CORE

BACK LENGTH: 42 CM  
RECYCLED PA 420D SQUARE  
RIPSTOP TPU

CAPACITY: 15+5 L  
WEIGHT: 750 g



N0247  
BLACK

### MIS2483 - CHAMONIX 25+5

CORE

BACK LENGTH: 42 CM  
RECYCLED PA 420D SQUARE  
RIPSTOP TPU

CAPACITY: 25+5 L  
WEIGHT: 850 g



N0247  
BLACK

N0247  
BLACK

### MIS2486 - CHAMONIX FANNY PACK

CORE

TRAVEL ACCESSORY  
RPA 420D - ETHER TPU - WR

WEIGHT: 140 g



N0247  
BLACK

### MIS10025 - CHAMONIX CASE 2L

CORE

TRAVEL ACCESSORY  
RPA 420D - ETHER TPU - WR  
CAPACITY: 2 L

WEIGHT: 130 g



N0247  
BLACK

### MIS10023 - CHAMONIX FLAT POUCH

CORE

TRAVEL ACCESSORY  
RPA 420D - ETHER TPU - WR

WEIGHT: 150 g



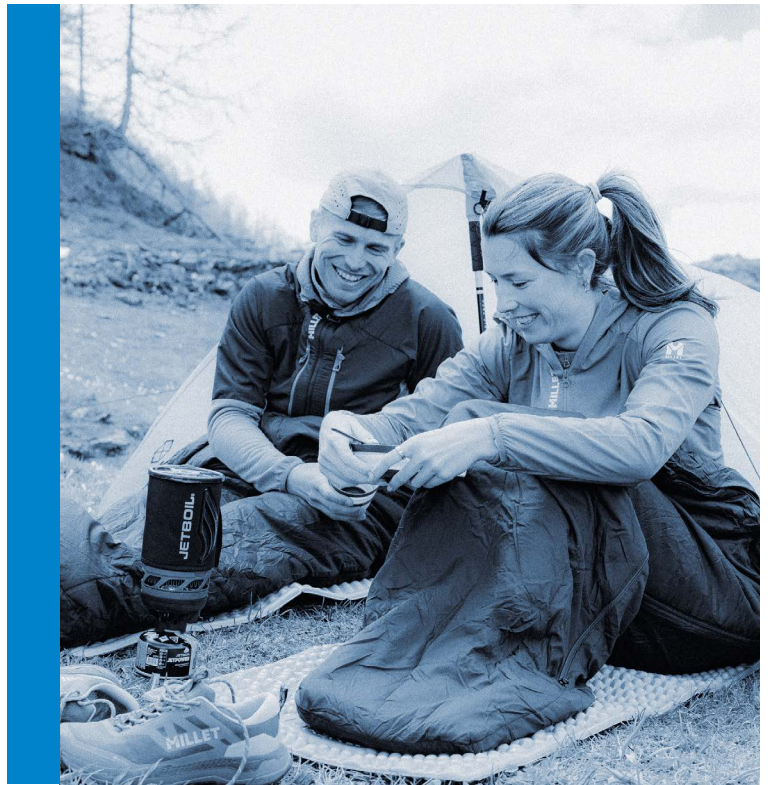
N0247  
BLACK



SIZE GUIDES

# SLEEPING BAGS

MOUNTAINEERING  
TREKKING/HIKING



## MOUNTAINEERING

### MIC1127 - LIGHT DOWN -10

EXT

#### DOWN

TEMPERATURE: -4°C / -10°C / -30°C  
PES 20D RIPSTOP  
PES 20D LINING  
INSULATION: RDS DUCK DOWN 90/10 – FP  
700 – K DRY™

CAPACITY: 7 L  
WEIGHT: 1260 g



N5714  
ABYSS

### MIC1110 - LIGHT DOWN -5°

CORE

#### DOWN

TEMPERATURE: 0°C / -6°C / -24°C  
PES 20D RIPSTOP  
PES 20D LINING  
INSULATION: RDS DUCK DOWN 90/10 – FP  
700 – K DRY™

CAPACITY: 5 L  
WEIGHT: 970 g



N8731  
BLUE DEPTHS

### MIC1128 - LIGHT DOWN -5W

EXT

#### DOWN

TEMPERATURE: 0°C / -6°C / -24°C  
PES 20D RIPSTOP  
PES 20D LINING  
INSULATION: RDS DUCK DOWN 90/10 – FP  
700 – K DRY™

CAPACITY: 5 L  
WEIGHT: 940 g



N8737  
ORION BLUE

### MIC1111 - LIGHT DOWN 0°

CORE

#### DOWN

TEMPERATURE: 5°C / 0°C / -16°C  
PES 20D RIPSTOP  
PES 20D LINING  
INSULATION: RDS DUCK DOWN 90/10 – FP  
700 – K DRY™

CAPACITY: 3,5 L  
WEIGHT: 730 g



N6390  
EMERALD

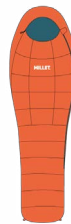
### MIC1112 - LIGHT DOWN 5

CORE

#### DOWN

TEMPERATURE: 10°C / 5°C / -10°C  
PES 20D RIPSTOP  
PES 20D LINING  
INSULATION: RDS DUCK DOWN 90/10 – FP  
700 – K DRY™

CAPACITY: 2,5 L  
WEIGHT: 550 g



N8749  
VERMILLON

## TREKKING / HIKING

### MIC10014 - EVOLE -5°

**NEW** **CORE**

#### DOWN

TEMPERATURE: 2°C / -4°C / -21°C  
 RECYCLED PES 20D RIPSTOP  
 RECYCLED PES 45D LINING  
 INSULATION: RE:DOWN® RECYCLED DUCK  
 80/20 – FP 650

CAPACITY: 7 L  
 WEIGHT: 1313 g  
 DOWN WEIGHT: 620 g



N4238  
BOTTLE

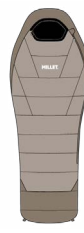
### MIC10013 - EVOLE 0°

**NEW** **CORE**

#### DOWN

TEMPERATURE: 5°C / 0°C / -15°C  
 RECYCLED PES 20D RIPSTOP  
 RECYCLED PES 45D LINING  
 INSULATION: RE:DOWN® RECYCLED DUCK  
 80/20 – FP 650

CAPACITY: 5 L  
 WEIGHT: 1000 g  
 DOWN WEIGHT: 420 g



N9309  
ROPE/DORITE

### MIC1129 - BAIKAL 1500 REG

**BASIC**

#### SYNTHETIC PADDING

TEMPERATURE: 1°C / -4°C / -21°C  
 RECYCLED PA 40D MINI RIPSTOP  
 RECYCLED PES 50D PONGEE LINING  
 INSULATION: RE-LOFT RECYCLED FIBER

CAPACITY: 10 L  
 OPENING: RIGHT AND LEFT ZIP  
 WEIGHT: 1540 g



**NEW** N7764  
FLAME

### MIC1131 - BAIKAL 1100 LONG

**BASIC**

#### SYNTHETIC PADDING

TEMPERATURE: 5°C / 0°C / -16°C  
 RECYCLED PA 40D MINI RIPSTOP  
 RECYCLED PES 50D PONGEE LINING  
 INSULATION: RE-LOFT RECYCLED FIBER

CAPACITY: 10 L  
 OPENING: RIGHT AND LEFT ZIP  
 WEIGHT: 1350 g



**NEW** N6548  
SHADOW BLUE

### MIC1130 - BAIKAL 1100 REG

**BASIC**

#### SYNTHETIC PADDING

TEMPERATURE: 5°C / 0°C / -16°C  
 RECYCLED PA 40D MINI RIPSTOP  
 RECYCLED PES 50D PONGEE LINING  
 INSULATION: RE-LOFT RECYCLED FIBER

CAPACITY: 8.5 L  
 OPENING: RIGHT AND LEFT ZIP  
 WEIGHT: 1190 g



**NEW** N2987  
GRANITE

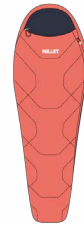
### MIC10024 - BAIKAL 1100 W

**NEW** **BASIC**

#### SYNTHETIC PADDING

TEMPERATURE: 6°C / 1°C / -14°C  
 RECYCLED PA 40D MINI RIPSTOP  
 RECYCLED PES 50D PONGEE LINING  
 INSULATION: RE-LOFT RECYCLED FIBER

CAPACITY: 8.5 L  
 OPENING: RIGHT AND LEFT ZIP  
 WEIGHT: 1170 g



N0099  
POP MELON

### MIC1134 - BAIKAL 750 LONG

**BASIC**

#### SYNTHETIC PADDING

TEMPERATURE: 10°C / 6°C / -6°C  
 RECYCLED PA 40D MINI RIPSTOP  
 RECYCLED PES 50D PONGEE LINING  
 INSULATION: RE-LOFT RECYCLED FIBER

CAPACITY: 4.5 L  
 OPENING: RIGHT AND LEFT ZIP  
 WEIGHT: 1050 g



**NEW** N0102  
HEMP

### MIC1133 - BAIKAL 750 REG

**BASIC**

#### SYNTHETIC PADDING

TEMPERATURE: 10°C / 6°C / -6°C  
 RECYCLED PA 40D MINI RIPSTOP  
 RECYCLED PES 50D PONGEE LINING  
 INSULATION: RE-LOFT RECYCLED FIBER

CAPACITY: 3.5 L  
 OPENING: RIGHT AND LEFT ZIP  
 WEIGHT: 920 g



**NEW** N6548  
SHADOW BLUE



**NEW** N2987  
GRANITE

### MIC10025 - BAIKAL 750 W

**NEW** **BASIC**

#### SYNTHETIC PADDING

TEMPERATURE: 10°C / 6°C / -6°C  
 RECYCLED PA 40D MINI RIPSTOP  
 RECYCLED PES 50D PONGEE LINING  
 INSULATION: RE-LOFT RECYCLED FIBER

CAPACITY: 3.5 L  
 OPENING: RIGHT AND LEFT ZIP  
 WEIGHT: 900 g



N9309  
ROPE/DORITE

### MIC10001 - BAIKAL 600

**BASIC**

#### SYNTHETIC PADDING

TEMPERATURE: 14°C / 10°C / -1°C  
 RECYCLED PA 40D MINI RIPSTOP  
 RECYCLED PES 50D PONGEE LINING  
 INSULATION: RE-LOFT RECYCLED FIBER

CAPACITY: 3 L  
 OPENING: RIGHT AND LEFT ZIP  
 WEIGHT: 750 g



**NEW** N3170  
ICON BLUE



**NEW** N0102  
HEMP

### MIC10026 - BAIKAL 600 W

**NEW** **BASIC**

#### SYNTHETIC PADDING

TEMPERATURE: 12°C / 9°C / -3°C  
 RECYCLED PA 40D MINI RIPSTOP  
 RECYCLED PES 50D PONGEE LINING  
 INSULATION: RE-LOFT RECYCLED FIBER

CAPACITY: 3 L  
 OPENING: RIGHT AND LEFT ZIP  
 WEIGHT: 720 g



N0078  
AQUATIC/SAPHIR

### MIC10017 - BAIKAL SQUARE DOUBLE

**NEW** **CORE**

#### SYNTHETIC PADDING

TEMPERATURE: 3°C / -3°C / -19°C  
 RECYCLED PA 40D MINI RIPSTOP  
 RECYCLED PES 50D PONGEE LINING  
 INSULATION: RE-LOFT RECYCLED FIBER

CAPACITY: 26 L  
 OPENING: RIGHT AND LEFT ZIP  
 WEIGHT: 2846 g



N0137  
HEMP / SHADOW  
BLUE

### MIC10016 - BAIKAL SQUARE

**NEW** **BASIC**

#### SYNTHETIC PADDING

TEMPERATURE: 14°C / 10°C / -1°C  
 RECYCLED PA 40D MINI RIPSTOP  
 RECYCLED PES 50D PONGEE LINING  
 INSULATION: RE-LOFT RECYCLED FIBER

CAPACITY: 3 L  
 OPENING: RIGHT AND LEFT ZIP  
 WEIGHT: 893 g



N0137  
HEMP / SHADOW  
BLUE

**MIC10011 - BAIKAL WARM LINER**

**NEW CORE**

PRIMALOFT® EVOLVE ACTIVE - RECYCLED

CAPACITY: 1,5 L  
WEIGHT: 267 g



N7764  
FLAME

**MIC1149 - BAIKAL LINER**

**BASIC**

POLYESTER 50 DENIER 300T

CAPACITY: 0.8 L  
WEIGHT: 200 g



N8735  
HIGH RISE

**MIC10018 - BAIKAL SQUARE LINER MIC1040 - BIVY BAG**

**NEW BASIC**

ORGANIC COTTON 102GR

CAPACITY: 1,5 L  
WEIGHT: 434 g



N0066  
PISTACHIO

**BASIC**

DRYEDGE™ POLYAMIDE 70 DENIER 210T

CAPACITY: 2 L  
WEIGHT: 480 g



N3744  
ASPHALT

CODE	PRODUCT	USE	TEMPERATURE			INSULATION
			COMFORT	LIMITED COMFORT	EXTREME	
MIC1167	TRILOGY MXP -40	EXPEDITION	-18°C	-27°C	-52°C	RDS Goose Down 90/10 – FP 800 – EXPEDRY
MIC1127	LIGHT DOWN -10	MOUNTAINEERING	-4°C	-10°C	-30°C	RDS Duck Down 90/10 – FP 700 – K DRY
MIC1110	LIGHT DOWN -5	MOUNTAINEERING	0°C	-6°C	-24°C	RDS Duck Down 90/10 – FP 700 – K DRY
MIC1128	LIGHT DOWN -5 W	MOUNTAINEERING	0°C	-6°C	-24°C	RDS Duck Down 90/10 – FP 700 – K DRY
MIC1111	LIGHT DOWN 0	MOUNTAINEERING	5°C	0°C	-16°C	RDS Duck Down 90/10 – FP 700 – K DRY
MIC1112	LIGHT DOWN 5	MOUNTAINEERING	10°C	5°C	-10°C	RDS Duck Down 90/10 – FP 700 – K DRY
MIC10014	EVOLE -5	TREKKING-HIKING	2°C	-4°C	-21°C	Re:Down® Recycled Duck 80/20 – FP 650
MIC10013	EVOLE 0	TREKKING-HIKING	5°C	0°C	-15°C	Re:Down® Recycled Duck 80/20 – FP 650
MIC1129	BAIKAL 1500 REG	TREKKING-HIKING	1°C	-4°C	-21°C	Re-loft Recycled synthetic fiber
MIC1131	BAIKAL 1100 LONG	TREKKING-HIKING	5°C	0°C	-16°C	Re-loft Recycled synthetic fiber
MIC1130	BAIKAL 1100 REG	TREKKING-HIKING	5°C	0°C	-16°C	Re-loft Recycled synthetic fiber
MIC10024	BAIKAL 1100 W	TREKKING-HIKING	6°C	1°C	-14°C	Re-loft Recycled synthetic fiber
MIC1134	BAIKAL 750 LONG	TREKKING-HIKING	10°C	6°C	-6°C	Re-loft Recycled synthetic fiber
MIC1133	BAIKAL 750 REG	TREKKING-HIKING	10°C	6°C	-6°C	Re-loft Recycled synthetic fiber
MIC10025	BAIKAL 750 W	TREKKING-HIKING	10°C	6°C	-6°C	Re-loft Recycled synthetic fiber
MIC10001	BAIKAL 600	TREKKING-HIKING	14°C	10°C	-1°C	Re-loft Recycled synthetic fiber
MIC10026	BAIKAL 600 W	TREKKING-HIKING	12°C	9°C	-3°C	Re-loft Recycled synthetic fiber
MIC10017	BAIKAL SQUARE DOUBLE	TRAVEL	3°C	-3°C	-19°C	Re-loft Recycled synthetic fiber
MIC10016	BAIKAL SQUARE	TRAVEL	14°C	10°C	-1°C	Re-loft Recycled synthetic fiber

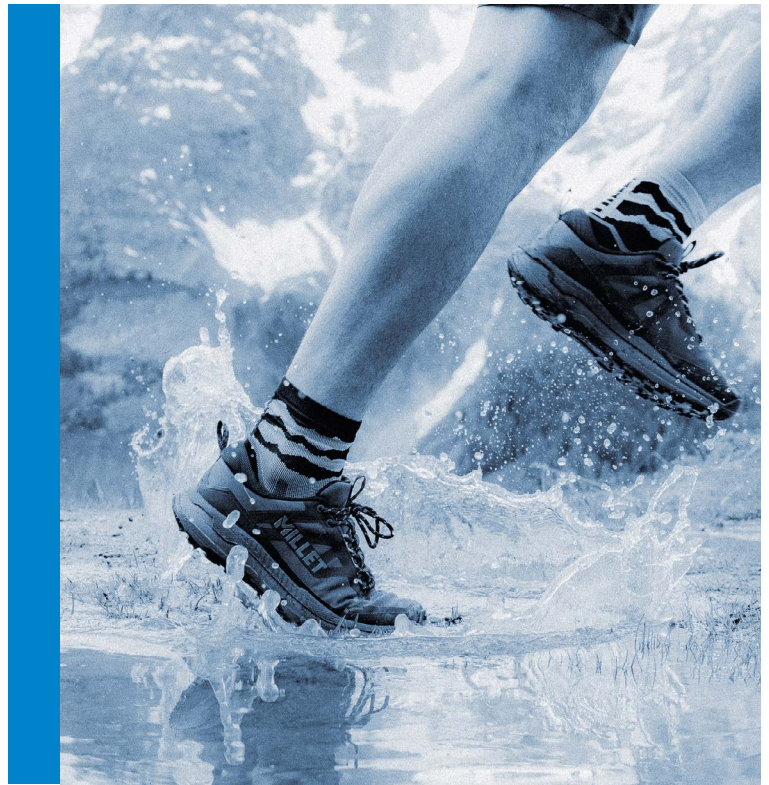
CODE	PRODUCT	WEIGHT	COMPRESSED VOLUME	SHAPE	ANTI-COLD FLAP	COMBINABLE	RIGHT/LEFT
MIC1167	TRILOGY MXP -40	2000g	15L	Alpine Mummy	OUI	NON	OUI
MIC1127	LIGHT DOWN -10	1190g	7L	Alpine Mummy	OUI	NON	NON
MIC1110	LIGHT DOWN -5	970g	5L	Alpine Mummy	OUI	NON	NON
MIC1128	LIGHT DOWN -5 W	940g	5L	Alpine Mummy	OUI	NON	NON
MIC1111	LIGHT DOWN 0	740g	3,5L	Alpine Mummy	OUI	NON	NON
MIC1112	LIGHT DOWN 5	560g	2,5L	Alpine Mummy	NON	NON	NON
MIC10014	EVOLE -5	1313g	7L	Wide Mummy	OUI	NON	NON
MIC10013	EVOLE 0	1000g	5L	Wide Mummy	OUI	NON	NON
MIC1129	BAIKAL 1500 REG	1540g	10L	Mummy	OUI	OUI	OUI
MIC1131	BAIKAL 1100 LONG	1350g	10L	Mummy	OUI	OUI	OUI
MIC1130	BAIKAL 1100 REG	1190g	8,5L	Mummy	OUI	OUI	OUI
MIC10024	BAIKAL 1100 W	1170g	8,5L	Mummy	OUI	OUI	OUI
MIC1134	BAIKAL 750 LONG	1050g	4,5L	Mummy	OUI	OUI	OUI
MIC1133	BAIKAL 750 REG	920g	3,5L	Mummy	OUI	OUI	OUI
MIC10025	BAIKAL 750 W	900g	3,5L	Mummy	NON	OUI	OUI
MIC10001	BAIKAL 600	750g	3L	Mummy	NON	OUI	OUI
MIC10026	BAIKAL 600 W	720g	3L	Mummy	NON	OUI	OUI
MIC10017	BAIKAL SQUARE DOUBLE	2846g	26L	Square	OUI	NON	OUI
MIC10016	BAIKAL SQUARE	893g	3L	Square	NON	OUI	OUI



SIZE GUIDES

# FOOTWEAR

MOUNTAINEERING  
CLIMBING SHOES  
TREKKING/HIKING  
TRAIL



## MOUNTAINEERING

### MIG1849 - EVEREST SUMMIT GTX

CORE

**VIBRAM MARMOLADA LIGHT**  
ARMOR EDGE HIGH TENACITY

SIZES: 5-12.5  
WEIGHT: 1330 g



7487  
SAPHIR/ROUGE

### MIG1862 - ELEVATION GTX U

CORE

**VIBRAM MULAZ**  
DYNEEMA & NYLON HIGH  
RESISTANCE UPPER  
GORE-TEX MEMBRANE EPE

SIZES: 4-12.5  
WEIGHT: 640 g



N0335  
RED

### MIG1781 - SUPER TRIDENT GTX M

CORE

**VIBRAM MULAZ**  
HIGH QUALITY SUEDE LEATHER  
GORE-TEX MEMBRANE EPE

SIZES: 6-12.5  
WEIGHT: 575 g



N4003  
TARMAC

### MIG10011 - FRICTION LT M

NEW CORE

**VIBRAM MEGALITH 2/  
MEGAGRIP**  
LEATHER SUEDE 1.4-1.6MM

SIZES: 6-12.5  
WEIGHT: 420 g



N4235  
DEEP SHARK

### MIG10012 - FRICTION LT W

NEW CORE

**VIBRAM MEGALITH 2/  
MEGAGRIP**  
LEATHER SUEDE 1.4-1.6MM

SIZES: 3.5-8.5  
WEIGHT: 350 g



N3172  
ROPE

### MIG10013 - FRICTION LT GTX M

NEW CORE

**VIBRAM MEGALITH 2/  
MEGAGRIP**  
LEATHER SUEDE 1.4-1.6MM  
GORE-TEX MEMBRANE EPE

SIZES: 5-14.5  
WEIGHT: 450 g



N0247  
BLACK

N0189  
BISON

### MIG10014 - FRICTION LT GTX W

NEW CORE

**VIBRAM MEGALITH 2/  
MEGAGRIP**  
LEATHER SUEDE 1.4-1.6MM  
GORE-TEX MEMBRANE EPE

SIZES: 2.5-12  
WEIGHT: 450 g



N0190  
TOADSTOOL

**MIG1971 - FRICTION EU U**

CORE 

**VIBRAM MULAZ**  
ITALIAN PERWANGER SUEDE  
LEATHER 1.4MM-1.6MM

SIZES: 4-12.5  
WEIGHT: 460 g



N9904  
DORITE

**MIG10005 - FRICTION EU GTX U**

CORE 

**VIBRAM MULAZ**  
ITALIAN PERWANGER SUEDE  
LEATHER 1.4MM-1.6MM  
GORE-TEX MEMBRANE EPE

SIZES: 4-12.5  
WEIGHT: 480 g



N3536  
TRUFFLE



N3172  
ROPE

**CLIMBING SHOES**

**MIG1955 - EASY UP M**

BASIC

**4POINTS GRIP DURABLE**  
4.5MM  
POLYESTER COTTON UPPER

SIZES: 37-46  
WEIGHT: 245 g



N8408  
PAPRIKA



N3172  
ROPE

**MIG1956 - EASY UP W**

BASIC

**4POINTS GRIP DURABLE**  
4.5MM  
POLYESTER COTTON UPPER

SIZES: 36-41  
WEIGHT: 215 g



N0065  
STARLINK

**TREKKING / HIKING**

**MIG10039 - SENECA 2 M**

NEW CORE

**MILLET M-TRAC**  
AIRMESH

SIZES: 6-12.5  
WEIGHT: 310 g



N0247  
BLACK



N0102  
HEMP

**MIG10040 - SENECA 2 W**

NEW CORE

**MILLET M-TRAC**  
AIRMESH

SIZES: 3.5-8.5  
WEIGHT: 280 g



N0130  
CANTEEN

**MIG10041 - SENECA 2 GTX M**

NEW CORE

**MILLET M-TRAC**  
RIPSTOP MESH  
GORE-TEX MEMBRANE EPE

SIZES: 6-12.5  
WEIGHT: 330 g



N4003  
TARMAC



N7094  
GRAPE LEAF

**MIG10042 - SENECA 2 GTX W**

NEW CORE

**MILLET M-TRAC**  
RIPSTOP MESH  
GORE-TEX MEMBRANE EPE

SIZES: 3.5-8.5  
WEIGHT: 300 g



N4003  
TARMAC

**MIG10043 - SENECA 2 MID GTX M**

NEW CORE

**MILLET M-TRAC**  
RIPSTOP MESH  
GORE-TEX MEMBRANE EPE

SIZES: 6-12.5  
WEIGHT: 380 g



N7094  
GRAPE LEAF



N2987  
GRANITE

**MIG10044 - SENECA 2 MID GTX W**

NEW CORE

**MILLET M-TRAC**  
RIPSTOP MESH  
GORE-TEX MEMBRANE EPE

SIZES: 3.5-8.5  
WEIGHT: 330 g



N0188  
DEEP GRANITE

**MIG1946 - UBIC MID GTX M**

CORE

**VIBRAM TRAILTREK/XSTREK**  
CERTIFIED SUEDE LEATHER  
GORE-TEX MEMBRANE EPE

SIZES: 6-12.5  
WEIGHT: 570 g



N2599  
DARK GREY

**MIG1947 - UBIC MID GTX W**

CORE

**VIBRAM TRAILTREK/XSTREK**  
CERTIFIED SUEDE LEATHER  
GORE-TEX MEMBRANE EPE

SIZES: 3.5-8.5  
WEIGHT: 495 g



N4003  
TARMAC

**MIG10033 - G TREK 4E GTX M**

NEW CORE

**VIBRAM NANGA LITEBASE**  
HIGH QUALITY SUEDE LEATHER  
GORE-TEX MEMBRANE EPE

SIZES: 6-12.5  
WEIGHT: 615 g



N9644  
IVY

**MIG10032 - G TREK 4E GTX W**

NEW CORE

**VIBRAM NANGA LITEBASE**  
HIGH QUALITY SUEDE LEATHER  
GORE-TEX MEMBRANE EPE

SIZES: 3.5-8.5  
WEIGHT: 525 g



N9904  
DORITE

**MIG10034 - G TREK 5E GTX M**

NEW CORE

**VIBRAM NANGA LITEBASE**  
HIGH QUALITY SUEDE LEATHER  
GORE-TEX MEMBRANE EPE

SIZES: 6-12.5  
WEIGHT: 685 g



N0247  
BLACK

**MIG1153 - BOUTHAN GTX**

BASIC

**VIBRAM FOURA**  
ITALIAN NUBUCK LEATHER  
GORE-TEX MEMBRANE EPE

SIZES: 6-11.5  
WEIGHT: 795 g



N2183  
ALMOND - VT AMANDE

TRAIL

**MIG10037 - INTENSE ENDURA M**

NEW CORE

**M-TRAC ENDURANCE**  
AIRMESH

SIZES: 6-11  
WEIGHT: 320 g



N4003  
TARMAC



N2987  
GRANITE

**MIG10038 - INTENSE ENDURA W**

NEW CORE

**M-TRAC ENDURANCE**  
AIRMESH

SIZES: 4.5-8.5  
WEIGHT: 260 g



N0129  
SASSAFRAS

**MIG10020 - INTENSE 4S GTX M**

NEW CORE

**M-TRAC ENDURANCE**  
ARMOR MESH  
GORE-TEX MEMBRANE EPE

SIZES: 5-14.5  
WEIGHT: 375 g



N4003  
TARMAC



N0102  
HEMP

**MIG10021 - INTENSE 4S GTX W**

NEW CORE

**M-TRAC ENDURANCE**  
ARMOR MESH  
GORE-TEX MEMBRANE EPE

SIZES: 2.5-12  
WEIGHT: 320 g



N0128  
DEEP FLOWER

**MIG1915 - INTENSE PRO BOA**

CORE

**MICHELIN ULTIMATE TRACTION**  
MATRYX MICRO

SIZES: 7.5-10  
WEIGHT: 260 g



N3174  
BLACK/ICON BLUE

**MIG1963 - INTENSE LIGHT U**

CORE

**MICHELIN ULTIMATE TRACTION**  
MATRYX MICRO

SIZES: 7.5-10  
WEIGHT: 225 g



N4528  
BLACK/WHITE



SIZE GUIDES

# ACCESSORIES

MOUNTAINEERING  
TREKKING/HIKING  
TRAIL  
EVERYDAY/TRAVEL



## MOUNTAINEERING

### MIS2362 - ALPINE GAITER GORE TEX

CORE

#### GAITERS

GORE-TEX PLAIN 70D EPE 3L PA  
RECYCLED

SIZES: M-L  
WEIGHT: 196 g



N0247  
BLACK

### MIS0524 - HELMET HOLDER

CORE

#### HELMET

WEIGHT: 74 g



N0247  
BLACK

### MIS10002 - LIGHT HELMET HOLDER

CORE

#### HELMET

RPA/SPAN - 2D MESH 180G  
DARLINGTON

WEIGHT: 30 g



N0247  
BLACK

### MIS2392 - CIMAÏ CHALK

CORE

#### CHALK BAG

P 600D OXFORD  
N 210D HONEYCOMB 3LINE

WEIGHT: 70 g



N3170  
ICON BLUE

N0247  
BLACK

### MIS10043 - SHOULDER BOTTLE HOLDER 500

EXT

#### POCKET

WEIGHT: 50 g



NEW N8014  
FOGGY DEW

## TREKKING / HIKING

### MIS10059 - RESERVOIR 2L

**NEW** **CORE**

#### RESERVOIR

WEIGHT: 77 g



N0400  
NEUTRE\*

### MIS10075 - RESERVOIR 1,5L

**NEW** **CORE**

#### RESERVOIR

WEIGHT: 66 g



N0400  
NEUTRE\*

### MIS2501 - UBIC CARBON PAIR

**BASIC**

#### POLES

CARBON FIBER

WEIGHT: 190 g



N5076  
BLUE ASTER

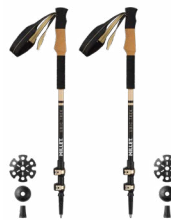
### MIS2497 - UBIC TREK PAIR

**BASIC**

#### POLES

ALUMINIUM 7075

WEIGHT: 250 g



N6322  
SESAME

### MIS2498 - UBIC HIKE PAIR

**BASIC**

#### POLES

ALUMINIUM 6061

WEIGHT: 270 g



N4634  
RED ORANGE

### MIS2109 - ALPINE GAITER DRY EDGE

**CORE**

#### GAITERS

N 420D OXFORD HD SD

SIZES: M-L

WEIGHT: 120 g



N2924  
BLACK/RED

### MIS2105 - HIGH ROUTE GAITERS

**BASIC**

#### GAITERS

N 420D OXFORD HD SD

SIZES: S-L

WEIGHT: 150 g



N2924  
BLACK/RED

### MIS2190 - ELEVATION GAITERS DRYEDGE

**EXT**

#### GAITERS

2 WAYS SPANDEX TWILL TPU

SIZES: M-L

WEIGHT: 100 g



N0247  
BLACK

### MIS2437 - UBIC BELT POCKET

**CORE**

#### POCKET

WEIGHT: 85 g



**NEW** N0247  
BLACK



**NEW** N0102  
HEMP



**NEW** N7317  
SAPHIR

### MIS2438 - UBIC SHOULDER POCKET

**CORE**

#### POCKET

WEIGHT: 65 g



**NEW** N0247  
BLACK



**NEW** N0102  
HEMP



**NEW** N7317  
SAPHIR

### MIS2454 - UBIC LINERS X3

**CORE**

#### POCKET

P250D OXFORD LINING 100%  
RECYCLED

CAPACITY: 7-5-3 L

WEIGHT: 210 g



N3170  
ICON BLUE

### MIS2453 - UBIC WP LINER

**EXT**

#### POCKET

CAPACITY: 8 L

WEIGHT: 80 g



N3170  
ICON BLUE

**MIS2247 - RAINCOVER «XL»****BASIC****RAINCOVER**P 75D RECYCLED 2000MM  
CAPACITY: 50-75 L

WEIGHT: 98 g

N5436  
SULFUR**MIS2246 - RAINCOVER «L»****BASIC****RAINCOVER**P 75D RECYCLED 2000MM  
CAPACITY: 30-50 L

WEIGHT: 74 g

N5436  
SULFUR**MIS2245 - RAINCOVER «M»****BASIC****RAINCOVER**P 75D RECYCLED 2000MM  
CAPACITY: 20-30 L

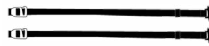
WEIGHT: 50 g

N5436  
SULFUR**MIS2244 - RAINCOVER S****BASIC****RAINCOVER**P 75D RECYCLED 2000MM  
CAPACITY: 10-15 L

WEIGHT: 40 g

N5436  
SULFUR**MIS2397 - UBIC STRAPS****BASIC****BUCKLE**

WEIGHT: 35 g

N0247  
BLACK**MIS2452 - UBIC STRAPS X2****CORE****BUCKLE**

WEIGHT: 26 g

N0247  
BLACK**MIS1910 - CHEST STRAP****BASIC****BUCKLE**

WEIGHT: 22 g

N0247  
BLACK**MIS1717 - ACCESSORY STRAP****BASIC****BUCKLE**

WEIGHT: 13 g

N0247  
BLACK**MIS1909 - BELT BUCKLE 40 MM****BASIC****BUCKLE**

WEIGHT: 48 g

N0247  
BLACK**MIS1908 - QUICK BUCKLE 25 MM****BASIC****BUCKLE**

WEIGHT: 10 g

N0247  
BLACK**MIS1907 - QUICK BUCKLE 20 MM****BASIC****BUCKLE**

WEIGHT: 5 g

N0247  
BLACK**TRAIL****MIS2361 - FLASK 500****CORE****FLASK**

CAPACITY: 0.5 L

WEIGHT: 35 g

N0400  
NEUTRE\***MIS2430 - FLASK 250****CORE****FLASK**

CAPACITY: 0,250 L

WEIGHT: 28 g

N0400  
NEUTRE\***MIS2431 - FLASK 150****CORE****FLASK**

CAPACITY: 0,150 L

WEIGHT: 22 g

N0400  
NEUTRE\***EVERYDAY / TRAVEL****MIS2486 - CHAMONIX FANNY PACK****CORE****TRAVEL ACCESSORY**

RPA 420D - ETHER TPU - WR

WEIGHT: 140 g

N0247  
BLACK**MIS10025 - CHAMONIX CASE 2L****CORE****TRAVEL ACCESSORY**RPA 420D - ETHER TPU - WR  
CAPACITY: 2 L

WEIGHT: 130 g

N0247  
BLACK**MIS10023 - CHAMONIX FLAT POUCH****CORE****TRAVEL ACCESSORY**

RPA 420D - ETHER TPU - WR

WEIGHT: 150 g

N0247  
BLACK

# LETTING<sup>®</sup>

## COMPOSITIONS LEGENDS / LÉGENDES COMPOSITIONS

COTTON	COTON	MEW	MERINO WOOL	LAINÉ MÉRINOS
CORDURA	CORDURA	PA	POLYAMIDE	POLYAMIDE
DYNEEMA	DYNEEMA	PE	POLYETHYLENE	POLYÉTHYLÈNE
ELASTANE	ÉLASTHANNE	PES	POLYESTER	POLYESTER
ETHYLENE VYNIL ACETATE	ÉTHYLÈNE ACÉTATE DE VINYLE	PU	POLYURETHANE	POLYURÉTHANE
EXPANDED POLYETHYLENE	POLYÉTHYLÈNE EXPANSÉ	RB	RUBBER	CAOUTCHOUC
THERMOPOLYURETHANE EXPANSÉ	THERMOPOLYURÉTHANE EXPANSÉ	TPU	THERMOPLASTIC POLYURETHANE	POLYURÉTHANE THERMOPLASTIQUE
LEATHER	CUIR	VI	VISCOSE	VISCOSE
LYOCELL, TENCEL	LYOCELL, TENCEL	WO	WOOL	LAINÉ

## PRODUCTS LEGENDS / LÉGENDES PRODUITS

 HEROS PRODUCTS / PRODUITS HÉROS	 NEW PRODUCTS / NOUVEAUX PRODUITS	 EVOLUTION PRODUCTS / ÉVOLUTION PRODUITS
 MADE IN FRANCE / FABRIQUÉ EN FRANCE	 MADE IN EUROPE / FABRIQUÉ EN EUROPE	 MADE IN OUR OWN FACTORIES / FABRIQUÉ DANS NOS PROPRES USINES
 CORE PRODUCTS / PRODUITS CORE	 BASIC PRODUCTS / PRODUITS BASIQUE	 EXTENSION PRODUCTS / PRODUITS EXTENSION



**MILLET®**

**Millet Mountain Group International Headquarter**  
21, rue du Pré Faucon, PAE Les Glaisins - 74943 ANNECY LE VIEUX cedex FRANCE - Tel : +33 (4) 50 69 59 59  
[www.millet.com](http://www.millet.com)