



Rafiki

SPRING/SUMMER
2027



FOR THE LOVE OF CLIMBING

Rafiki was born while we were getting pumped on long rock lines, projecting moves on difficult boulders, walking a wobbly slackline, and enjoying evenings spent sitting by the fire with friends. These are the experiences that inspired our first t-shirts and pants and continue to inspire our entire collection today. We are climbers and nothing will ever change that.

#RAFIKICLIMBING



GO SUSTAINABLE



REDUCE



RECYCLE



REUSE



RETHINK

When producing apparel and gear for the sport that is so tightly connected to nature as climbing is, sustainability naturally comes to the process. We design and manufacture every single piece to be as durable as possible and in timeless design. The longer it serves each buyer the better for nature. We work hard to find eco friendly materials that can replace plastic and non-natural fabrics while maintaining the same quality and performance. We are not at the finish line yet, but we push further with every collection. To reduce the amount of used plastics, we also reduce the packaging size, and all Rafiki products are packed into recycled plastic bags.

MATERIAL AND FEATURES LEGEND

MATERIALS



DUCK DOWN

All-natural fill comprised of goose or duck plumage. The lofty nature of the plumage allows it to trap air between its filaments, which is then heated by the body's warmth.



DUPONT SORONA

Eco-efficient performance insulation fiber that is 37% plant based, using 30% less energy and emitting 50% less greenhouse gas as compared to the production of insulation fiber from non-renewable resources.



SORONA AGILE

Superior substitute for spandex, it is an eco-friendly performance fiber made in part from annually renewable plant-based ingredients (37%). Compared to Nylon 6 it uses 30% less energy and releases 63% fewer greenhouse gas emissions.



POLAR STRETCH GRID

Thin fleece that is lighter and more breathable than ever thanks to the grid construction and the channels between the touch points.



POLAR STRETCH LOFT

Brushed fleece with a high loft that has great thermo-insulating properties and at the same time feels soft and warm against the skin.



ORGANIC COTTON

More sustainable and environmentally friendly alternative to conventional cotton, grown without the use of toxic and persistent pesticides.



COTTON

Natural, soft, breathable, and hypoallergenic fabric that is highly absorbent and durable.



TENCEL

TENCEL® is a branded lyocell fiber made from sustainably sourced wood pulp, known for its softness, breathability, moisture-wicking performance, durability, and eco-friendly profile.



LYOCELL

Sustainable fibre made from wood pulp that is soft, breathable and gentle on the skin. Known for excellent moisture management and long-lasting durability.



MODAL

Fibres made from beech pulp that are certified as biodegradable and compostable and at the same time feel soft against the skin.



COCARBER®

Coffee carbon fiber features a porous structure that absorbs odors, retains warmth, and offers natural antibacterial properties. Made from recycled coffee grounds, it's an eco-friendly solution for functional textiles.



LINEN

Natural flax-based textile that dries up quickly, which helps reduce heat retention in very warm conditions.



COOLMAX®

COOLMAX® fiber is a specially engineered fiber that wicks sweat away from the body, keeping you cool and dry.



POLYGIENE

Embedded antibacterial technology to reduce odour and keep garments fresh longer.



RECYCLED POLYESTER

Also known as rPET, is obtained by melting down existing plastic and re-spinning it into new polyester fiber.



RECYCLED POLYAMIDE

Material that has been recycled from waste. The raw material source for recycled polyamide can be old fishing nets and carpets, and also waste from manufacturing industry.



POLYESTER/COTTON

Polyester/cotton, also known as TC fabric, is a blend that brings together two difference fibers - polyester and cotton - in a way that balances their qualities.



YKK ZIPPERS

High-quality zippers made by YKK, a global leader in fastening solutions. Known for smooth operation, exceptional durability and long-lasting reliability.



CERTIFICATES

GOTS

The strictest certification for textiles made of organic textile fibers.



RDS

Independent, global standard for down feathers that places great emphasis on animal welfare.

FEATURES



THERMOREGULATORY

Fabric naturally regulates temperature, keeping you cool in summer and warm in winter.



ANTIBACTERIAL

Fabric naturally resists bacteria growth, promoting a fresh and hygienic feel.



CLIMBING DENIM

Crafted with durability in mind, it combines the classic look of denim with performance features like surprisingly big stretch and reinforced stitching.



WATER REPELLENT

DWR treated fabric resists water, causing it to bead and roll off. It keeps you dry without sacrificing breathability.



WIND RESISTANT

Wind-resistant fabric blocks cold gusts, keeping you warm and comfortable in blustery conditions.



STRETCHY

Models that provide an especially flexible and comfortable fit, allowing freedom of movement without compromising durability.



QUICK DRY

Quick-dry garments that swiftly wick away moisture, keeping you dry and comfortable during all activities.



WICKING

Wicking fabric draws moisture away from the skin to the surface, where it evaporates quickly. This keeps you dry and comfortable during activity.



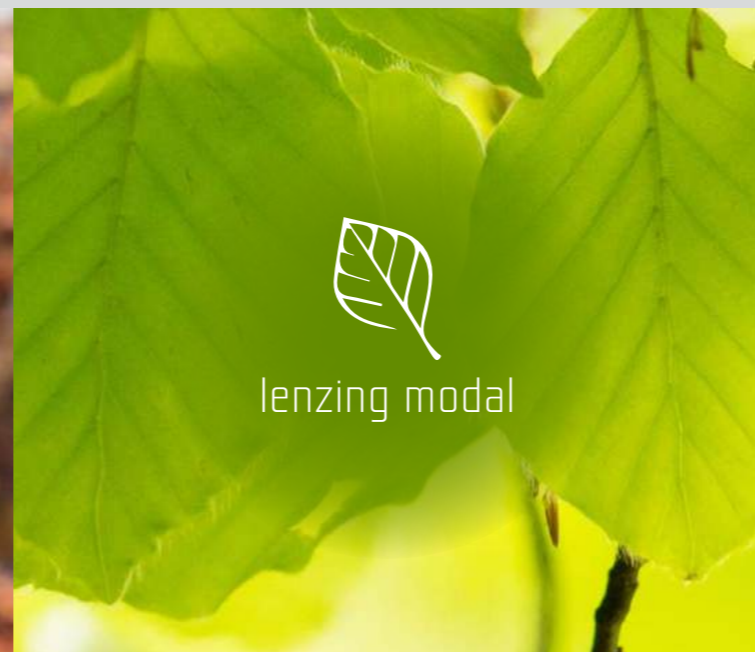
LIGHTWEIGHT

Models that are made from light materials and therefore great for active movement.

REDUCE



organic cotton



lenzing modal



linen



DUPONT SORONA



cocarber®



recycled material

RETHINK



THE GLOBAL ORGANIC TEXTILE STANDARD (GOTS)

... is recognised as the world's leading processing standard for textiles made from organic fibres. It defines high-level environmental criteria along the entire organic textiles supply chain and requires compliance with social criteria as well. Only textile products that contain a minimum of 70% organic fibres can become GOTS certified. All chemical inputs such as dyestuffs and auxiliaries used must meet certain environmental and toxicological criteria. The choice of accessories is limited in accordance with ecological aspects as well. A functional waste water treatment plant is mandatory for any wet-processing unit involved and all processors must comply with social criteria.



RESPONSIBLE DOWN STANDARD

... is promoted internationally by the Textile Exchange, provides for the release of an environmental declaration verified by a third party which ensures that down and feathers used for padding elements are obtained from aquatic birds (goose and duck) or terrestrial (e.g. chicken and turkey) that have not been subjected to treatments that cause pain, suffering or stress and that an identification and traceability system that applies to the origin of the material is applied and maintained.

NEW PRODUCTS AND COLORS ARE HIGHLIGHTED IN RED.

WOMEN'S COLLECTION

AIRA	24
CAMALOT	29
CERRO	61
CHAIN	60
CHAIN CAPRI	59
CHULILLA	22
DARCY	42
ESTRELLA	37
FALAISES	58
FEMIO	49
FINALE	23
JAY	26-27
JUNO LT	54
KIMI	62
LILLY	30
MANDREA	46
MARGA LT	51
MASSONE	53
MISTY LT	50
MOJARRA	41
MOVY	17
MURIEL	52
NAILA	34
NATIE	28
NIMIA	19
NIMIA CHALK	20
NOIA	45
NOKO	31
NOMA	25
PROJECT W	43
ROYA	63
SHIVA LT	55
TALIA	35
TARRAGONA	47
VEGA W	38
VELLA	44
VENI	18
VIVE	16
YURI	21

MEN'S COLLECTION

ZANAYA CORD	57
ZENITH W	36
ZION	33
ZULU CROP	39

ARCOS	70-71
BETA	100
CLIFFBASE	90
CRAG	93
CRIMP	101
CRUX	89
CRUX CORD	98
DANTE	80
DRIVE LT	84
GNAR LT	96
GRAB LT	74
GRANITE	73
GRIP LT	97
LAMAR	95
LAMAR CORD	99
LEAD II	82
MARGALEF	67
MATTO LT	86
MEGOS	88
MOOD	69
MOONSTONE LT	83
ORCO LT	87
PROJECT M	81
RIDGE LT	85
ROCCA	103
RUNOUT	91
SLAB LT	72
TORRE II	102
TRAVERSE	76
VEGA M	77
VENGA	94
VIRAGE	79
ZENITH M	75
ZONE	66
ZULU UNI	78

KID'S COLLECTION

KAILAS JR	107
PEDRO JR	108
RUMNEY JR	109

ACCESSORIES

BISHOP	127
CAMP	121
CAMPO	125
CHALK	129
GRADE	112
GRIT 28	115
GRIT 40	114
GUIDE BOOK COVER	120
HAULER 50	116
MARAY	122
MARAY PRINT	123
ROCKY	124
ROPER	117
SCOOP	126
SCRUB 26	118

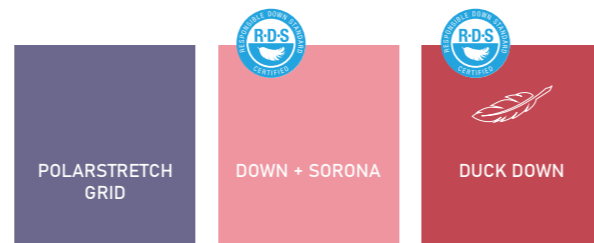
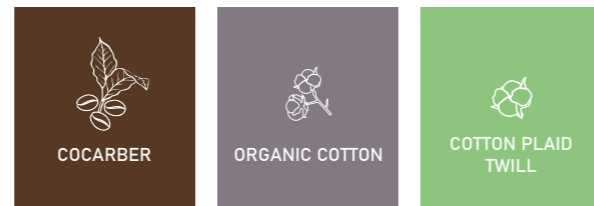
SHOES COLLECTION

ASSOS	138
ASSOS W	139
SLASH	143
SWITCHBACK SLIP-ON	136
SWITCHBACK SLIP-ON W	137
SWITCHBACK TRAIL	134
SWITCHBACK TRAIL W	135
SWITCHBACK TRAVERSE	132
SWITCHBACK TRAVERSE W	133
TERRA	140
TERRA W	141

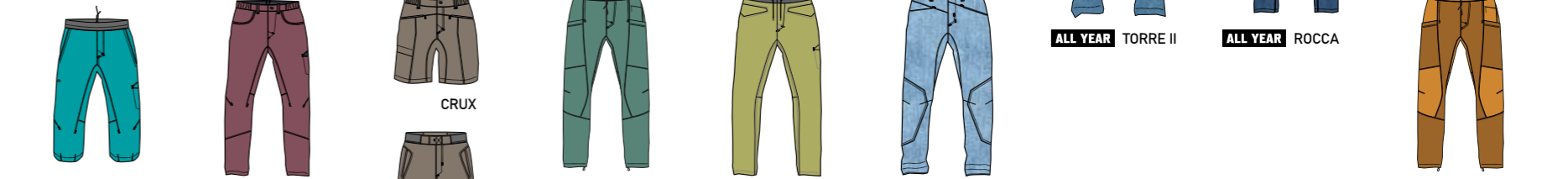
PROMOTION

BANNER	144
BOW FLAG	144
CRASHPAD BENCH	144
CUBE	145
HANGERS	146
LOGO STAND	145
NALGENE BOTTLE	146
SEATING CUBE	145
STICKERS	146

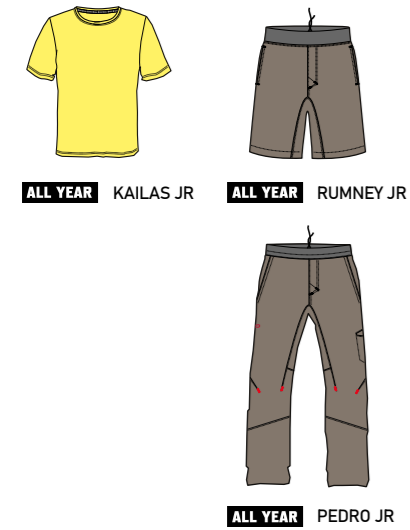
MEN map



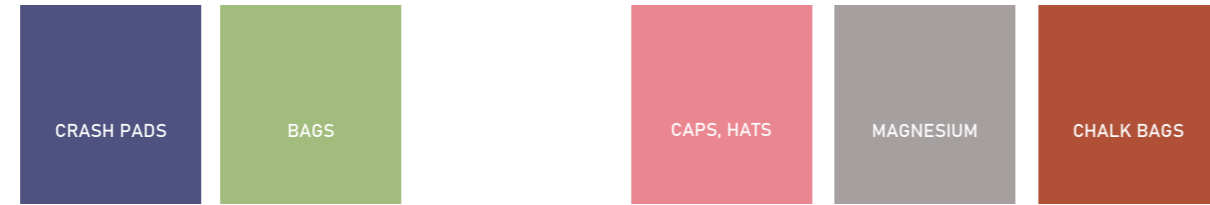
MEN map



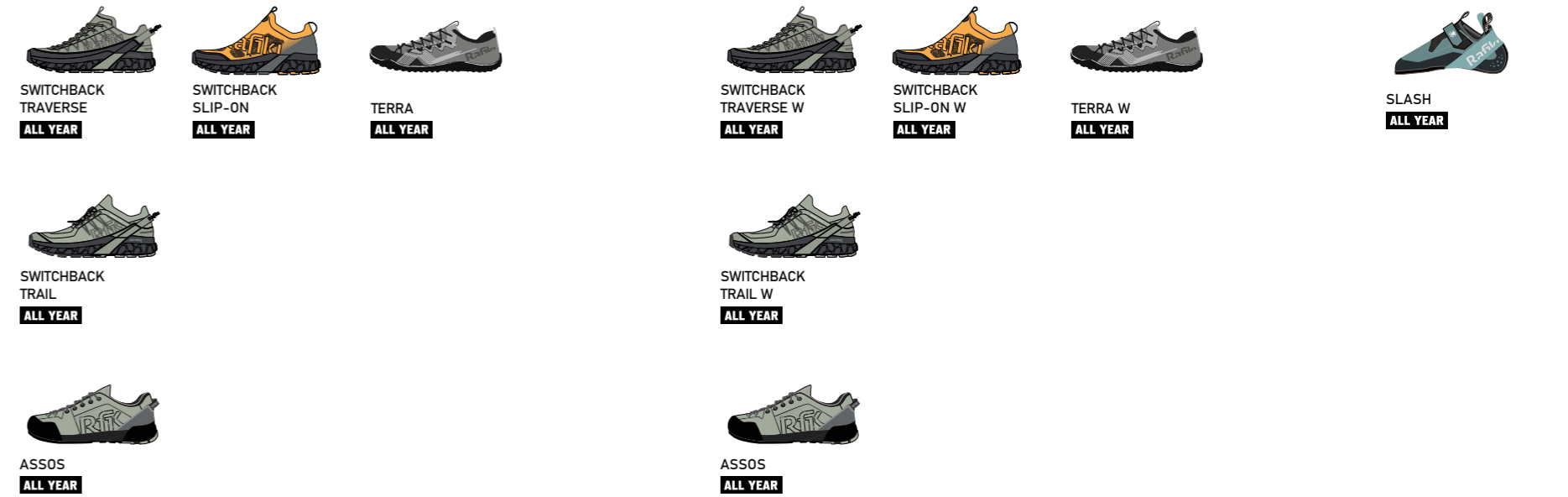
KIDS map



ACCESSORIES map



SHOES map





RAFIKI WOMEN



VIVE

NEW **ALL YEAR**

WOMEN'S PERFORMANCE STRETCH BRA



DESCRIPTION

MAIN: 82% polyester 18% elastane
SECONDARY: 92% polyester 8% elastane
(inner bra)

INFO

fit: slim
size: 34-40

SIZE 36:
weight: 98 g
back length: 31 cm

FEATURES

- dual strap design
- perforated zones
- removable pads

PRODUCT DESCRIPTION

Stretchy, lightweight, comfortable. That's the Rafiki Vive bra. If you're about to generate power and push your limits, it definitely deserves a spot in your pack. Thanks to the integrated inner bra with removable cups, it provides the support you need for both climbing and training – exactly the way you want it. Perforations on the back and sides aren't just a design detail, but a functional feature for better ventilation. And if you manage to sweat it out during a session or a sunny day on the rock, the polyester-elastane blend ensures it dries faster than you can finish your snack. The two-tone straps just highlight the overall look.



india ink/cedar
10077094RFX

dusty cedar/ink
10077093RFX

color: dusty cedar/ink
The model is 175 cm tall and wears size 36.

MOVY

NEW **ALL YEAR**

WOMEN'S PERFORMANCE STRETCH TANK TOP



DESCRIPTION

MAIN: 82% polyester 18% elastane
SECONDARY: 92% polyester 8% elastane
(inner bra)

INFO

fit: slim
size: 34-40

SIZE 36:
weight: 124 g
back length: 46 cm

FEATURES

- built in bra with removable pads
- dual strap design
- perforated zones

PRODUCT DESCRIPTION

Stretchy, lightweight, comfortable. That's the Rafiki Movy tank. If you're about to generate power and push your limits, it definitely deserves a spot in your pack. Thanks to the integrated inner bra with removable cups, it provides the support you need for both climbing and training – exactly the way you want it. Perforations on the back and sides aren't just a design detail, but a functional feature for better ventilation. And if you manage to sweat it out during a session or a sunny day on the rock, the polyester-elastane blend ensures it dries faster than you can finish your snack. The two-tone straps just highlight the overall look.



india ink/cedar
10077024RFX

dusty cedar/ink
10077023RFX

color: dusty cedar/ink
The model is 175 cm tall and wears size 36.





VENI

NEW **ALL YEAR**

WOMEN'S PERFORMANCE STRETCH SHORTS

DESCRIPTION

MAIN: 82% polyester 18% elastane

INFO

fit: slim
size: 34-40

SIZE 36:
weight: 130 g
back length: 11 cm

FEATURES

- wide elastic waistband
- side pocket
- flatlock construction
- seamless front panel
- small secret waistband pocket



PRODUCT DESCRIPTION

Looking for shorts that stay exactly where they should? Rafiki Veni delivers just that. They're stretchy, comfortable, and move with you every step of the way. Flat seams and a smooth, seam-free front panel ensure nothing holds you back - whether you're working your project or flowing through a yoga session. A practical pocket on the right thigh keeps your phone close, while a hidden pocket in the waistband stores small essentials like a gym access chip.



color: india ink
10077092RFX



color: india ink
The model is 175 cm tall and wears size 36.

NIMIA

NEW **ALL YEAR**

WOMEN'S PERFORMANCE STRETCH LEGGINGS

DESCRIPTION

MAIN: 82% polyester 18% elastane

INFO

fit: slim
size: 34-40

SIZE 36:
weight: 210 g
back length: 67 cm

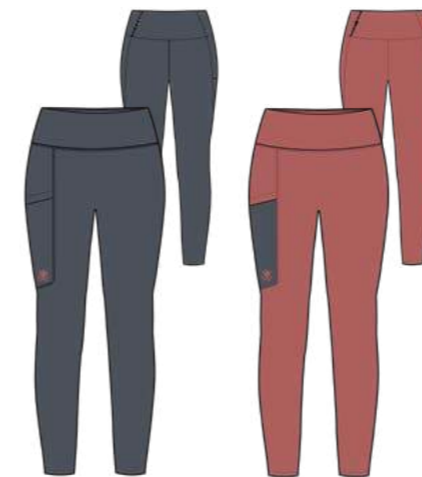
FEATURES

- wide elastic waistband
- side pocket
- flatlock construction
- seamless front panel
- small secret waistband pocket



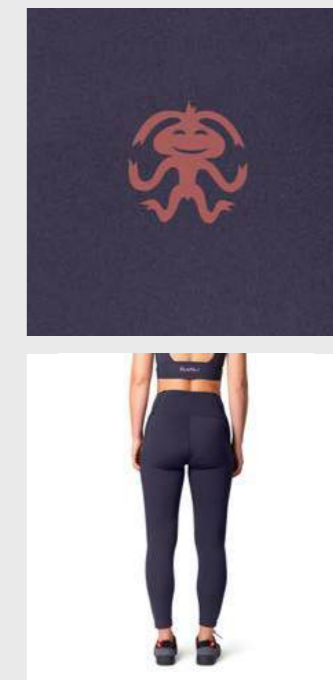
PRODUCT DESCRIPTION

Looking for leggings that feel like a second skin? Rafiki Nimia delivers exactly that. They're stretchy, comfortable, and move with you every step of the way. Flat seams and a smooth, seam-free front panel ensure nothing holds you back - whether you're working your project or flowing through a yoga session. A practical pocket on the right thigh keeps your phone close, while a hidden pocket in the waistband stores small essentials like a gym access chip.



color: india ink
10077035RFX

color: dusty cedar/ink
10077036RFX



color: india ink
The model is 175 cm tall and wears size 36.





NIMIA CHALK

NEW **ALL YEAR**

WOMEN'S PERFORMANCE STRETCH LEGGINGS



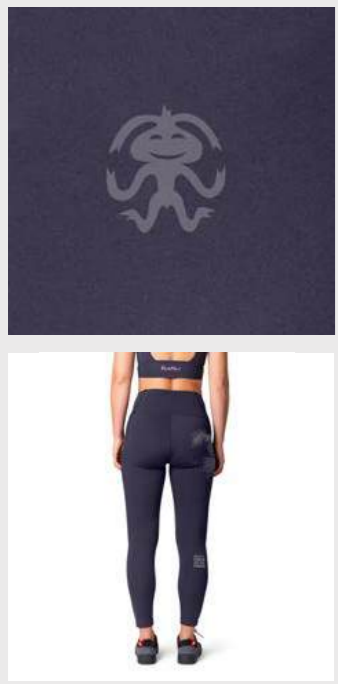
DESCRIPTION	INFO	FEATURES
MAIN: 82% polyester 18% elastane	fit: slim size: 34-40 SIZE 36: weight: 198 g back length: 67 cm	<ul style="list-style-type: none"> • wide elastic waistband • flatlock construction • seamless front panel • small secret waistband pocket • chalk-dust-effect print

PRODUCT DESCRIPTION

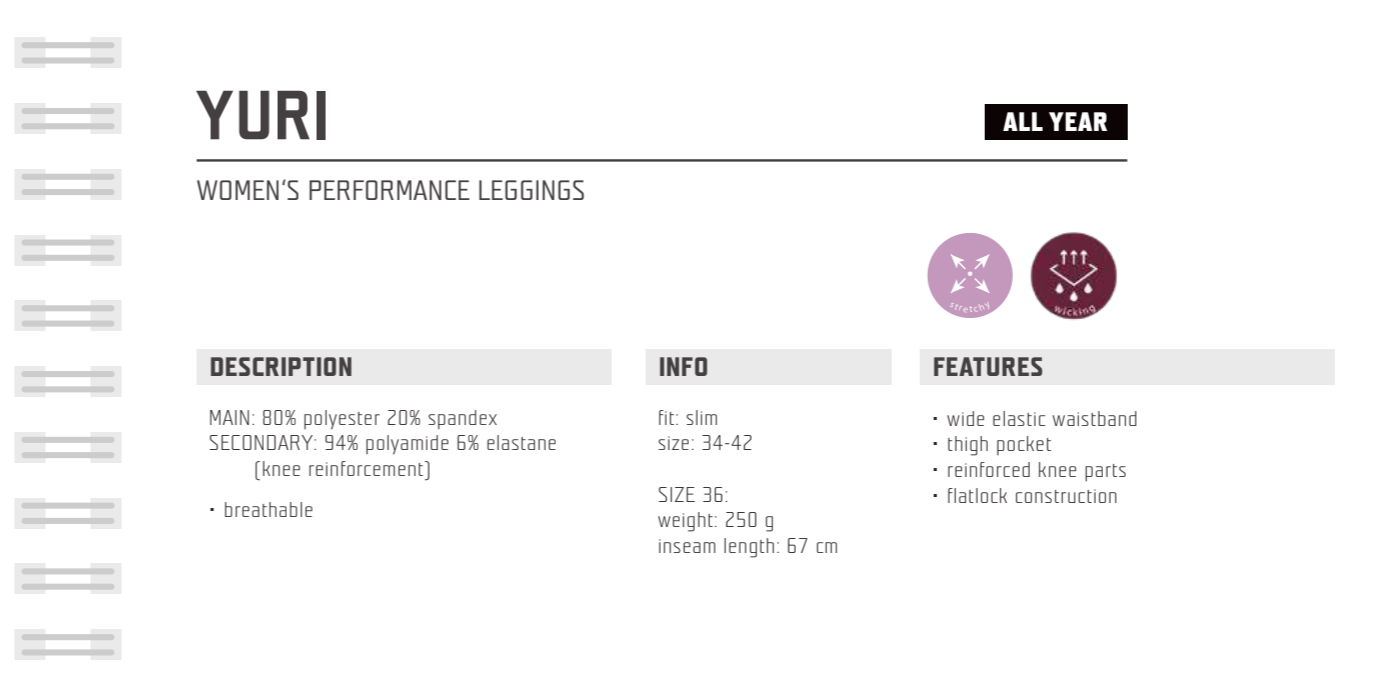
Looking for leggings that feel like a second skin? Rafiki Nimia Chalk delivers exactly that. They're stretchy, comfortable, and move with you every step of the way. Flat seams and a smooth, seam-free front panel ensure nothing holds you back - whether you're working your project or flowing through a yoga session. A practical pocket on the right thigh keeps your phone close, while a hidden pocket in the waistband stores small essentials like a gym access chip. And because chalk is simply part of climbing, the Nimia Chalk leggings feature a unique design detail - they look like they've already seen some routes. Just like you.



india ink (chalk)
10077037RFX



color: india ink (chalk)
The model is 175 cm tall and wears size 36.



YURI

ALL YEAR

WOMEN'S PERFORMANCE LEGGINGS



DESCRIPTION	INFO	FEATURES
MAIN: 80% polyester 20% spandex SECONDARY: 94% polyamide 6% elastane (knee reinforcement)	fit: slim size: 34-42 SIZE 36: weight: 250 g inseam length: 67 cm	<ul style="list-style-type: none"> • wide elastic waistband • thigh pocket • reinforced knee parts • flatlock construction

PRODUCT DESCRIPTION

The women's winter leggings Yuri will keep you comfortable even in the coldest weather. Your knees are your best friends, always - that's why we reinforced them, so you can count on them no matter what. There's also a practical thigh pocket for your phone. The high waistband guarantees comfort and keeps your back covered. A seamless front panel ensures maximum comfort and full range of motion during even the toughest sequences.



anthracite
10070567RFX



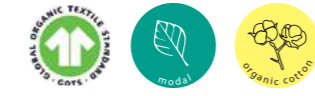
color: anthracite
The model is 175 cm tall and wears size 36.



CHULILLA

ALL YEAR

WOMEN'S PERFORMANCE LIGHTWEIGHT SHORT SLEEVE TEE



DESCRIPTION	INFO	FEATURES
<p>MAIN: 50% modal 50% organic cotton</p> <ul style="list-style-type: none"> breathable soft 	<p>fit: straight size: 34-42</p> <p>SIZE 36 weight: 85 g back length: 61 cm</p>	<ul style="list-style-type: none"> eco fabric natural touch

PRODUCT DESCRIPTION

If you care about the environment and style then the women's Chulilla will make you happy twice. The combo of bio cotton and visionary fabric Lenzing Modal® is light and airy. Lenzing Modal is made from beech pulp in nearby Austria and it is certified as compostable and biodegradable both industrially and at home and can be completely lost in nature again without any residue. By this, we don't want you to throw your T-shirt under a rock, but we want to give you a more nature-friendly choice. Chulilla is pleasant both to touch and to look at. And you will definitely stand out among other climbers thanks to its colorful asymmetric parts.



rosette/raven 10076971RFX
 raven/taupe/sagebrush 10076969RFX
 dusty cedar/rosette/raven 10076970RFX
 raven/sagebrush 10076968RFX

color: rosette/raven
 The model is 175 cm tall and wears size 36.

FINALE

ALL YEAR

WOMEN'S PERFORMANCE LIGHTWEIGHT LONG SLEEVE TEE



DESCRIPTION	INFO	FEATURES
<p>MAIN: 50% modal 50% organic cotton</p> <ul style="list-style-type: none"> breathable soft 	<p>fit: straight size: 34-42</p> <p>SIZE 36 weight: 110 g back length: 61 cm</p>	<ul style="list-style-type: none"> eco fabric natural touch

PRODUCT DESCRIPTION

The next time you set off for an outdoor bouldering, put on the women's long-sleeved Finale T-shirt! It's made of a technical material that is light and moisture-wicking. We've chosen the combination of organic cotton plus and Lenzing Modal® material, whose fiber comes from beech wood. Eco-friendly fabric with a very pleasant and natural touch. The long sleeves protect you from abrasions and cold temperatures even when you are climbing in the shade and on boulders under the trees like in Fontainebleau or Ticino woods. Try their bold color combinations, be attractive, and mainly above all: still truly yourself!



raven/taupe/rosette 10076951RFX
 raven/taupe/sagebrush 10076950RFX
 dusty cedar/rosette/raven 10076952RFX
 raven/sagebrush 10076949RFX

color: raven/sagebrush
 The model is 175 cm tall and wears size 36.





AIRA

NEW ALL YEAR

WOMEN'S PERFORMANCE LIGHTWEIGHT TANK TOP



DESCRIPTION

MAIN: 80% recycled polyester 20% elastane
 • breathable

INFO

fit: regular
 size: 34-42

 SIZE 36:
 weight: 52 g
 back length: 60 cm

FEATURES

- flat taped seams
- perforated zones
- wide shoulder straps

PRODUCT DESCRIPTION

The new Rafiki Aira climbing tank is made for every project and training session. The lightweight fabric, a blend of recycled polyester and spandex, feels great on the body, offers stretch, and dries quickly-so when you really push yourself on the wall or out on the rocks, it practically dries as you go. The flowing cut fits well and doesn't restrict your movement. The minimalist design is complemented by decorative perforation on the back, while the sides feature purely functional perforation that keeps the air flowing, so you stay cool and can focus on your next move.



india ink
10076920RFX

puritan gray
10076919RFX

amber green
10076921RFX

color: puritan gray
The model is 175 cm tall and wears size 36.



NOMA

NEW ALL YEAR

WOMEN'S ULTRALIGHT T-SHIRT FOR ACTIVE MOVEMENT



DESCRIPTION

MAIN: 80% recycled polyester 20% elastane
 • breathable

INFO

fit: regular
 size: 34-44

 SIZE 36:
 weight: 74 g
 back length: 58 cm

FEATURES

- extended-shoulder design
- flat taped seams
- perforated zones
- round neckline

PRODUCT DESCRIPTION

The new Rafiki Noma climbing shirt is made for every project and training session. The lightweight fabric, a blend of recycled polyester and spandex, feels great on the body, offers stretch, and dries quickly-so when you really push yourself on the wall or out on the rocks, it practically dries as you go. The looser sleeveless cut gives you maximum freedom of movement without holding you back. The minimalist design is complemented by subtle decorative perforation on the back, while the sides feature functional perforation that improves airflow, so you can stay focused on your next move.



india ink
10077043RFX

puritan gray
10077042RFX

amber green
10077044RFX

color: amber green
The model is 175 cm tall and wears size 36.





JAY

ALL YEAR

WOMEN'S ORGANIC SHORT SLEEVE TEE



DESCRIPTION

MAIN: 100% organic cotton

- breathable
- soft

INFO

fit: regular
size: 32-42

SIZE 36
weight: 95 g
back length: 60 cm

FEATURES

- eco fabric
- prints variation
- wide neck opening
- raw edge neck and sleeve hems

PRODUCT DESCRIPTION

Comfortable t-shirt made of 100% organic cotton, which is suitable not only for climbing but for any other activity you choose to pursue in your free time. Attractive colors with unique prints reflect the action-packed personality of any woman or girl. With all these prints and colors you just pick the right one for you. Casual wear, traveling, hiking, and of course where we like it most- the crags!



rainy day
10076974RFX

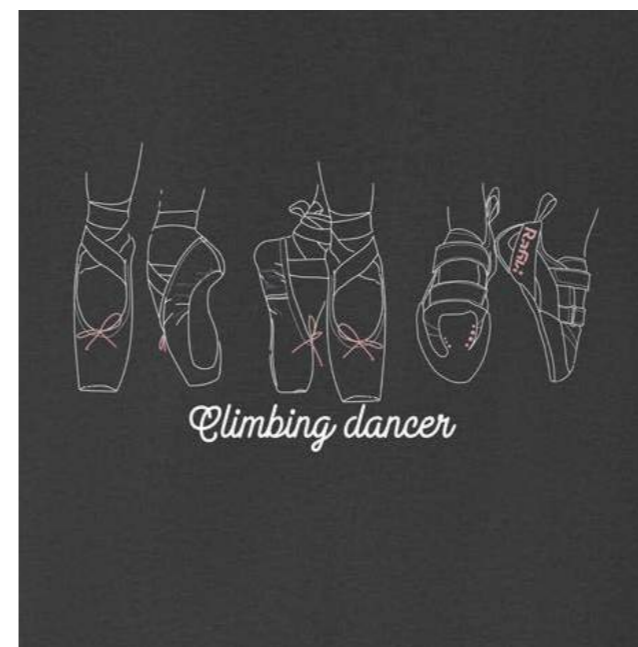
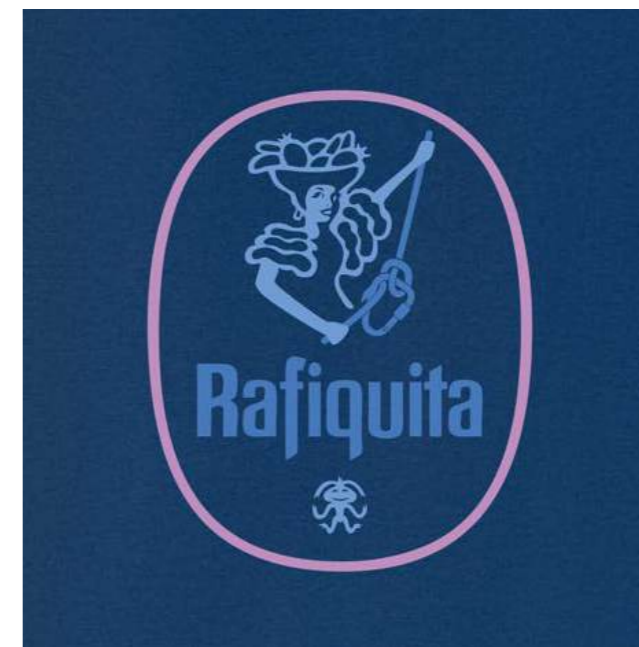
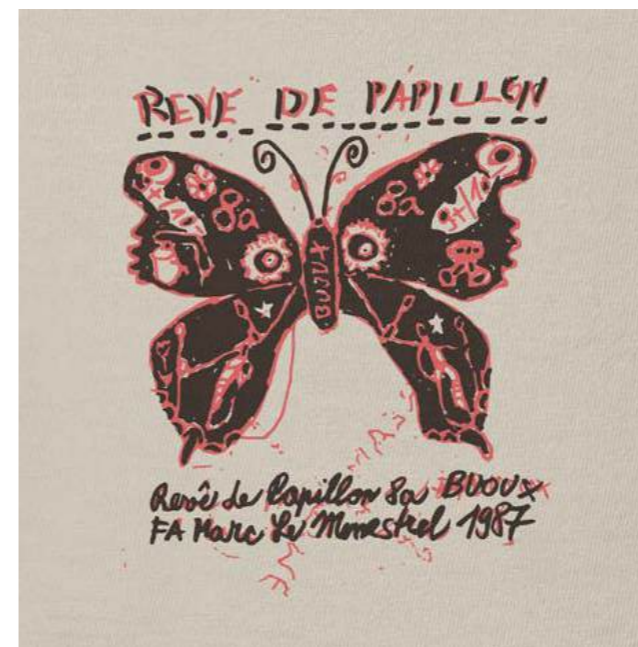
ensign blue II
10052558RFX

basil
10076973RFX

raven
10076972RFX

rosette
10063753RFX

white
10029693RFX



color: rosette
The model is 162 cm tall and wears size 36.



NATIE

NEW

WOMEN'S OVERSIZE T-SHIRT



DESCRIPTION

MAIN: 100% organic cotton

- breathable
- durable

INFO

fit: oversize
size: 34-44

SIZE 36:
weight: 130 g
back length: 48 cm

FEATURES

- eco fabric
- dropped shoulders
- round neckline
- wide sleeves

PRODUCT DESCRIPTION

Comfort and style – that's exactly what defines the Natie T-shirt. It's the perfect piece to complete your rest day outfit, but you can just as easily take it out for a boulder session. The dropped shoulders visually narrow the upper body, so if you've built that climber's triangle from hours and hours on the wall, this is exactly the kind of piece you'll want in your wardrobe. In the black version, we've taken the look even further with a bold washed effect.



raven
10077032RFX

rainy day
10077034RFX

basil
10077033RFX

color: basil
The model is 175 cm tall and wears size 36.

CAMALOT

NEW

WOMEN'S AFTERCLIMBING OVERSIZE DRESS



DESCRIPTION

MAIN: 100% organic cotton

- breathable
- durable

INFO

fit: oversize
size: 34-44

SIZE 36:
weight: 210 g
back length: 89 cm

FEATURES

- eco fabric
- dropped shoulders
- round neckline
- 2 large side pockets
- wide sleeves

PRODUCT DESCRIPTION

Comfort and style – that's exactly what defines the Camalot dress, a perfect piece for your rest day outfit, city wear, or slow mornings by the van under the crags. The oversized fit with dropped shoulders creates a relaxed look, making it exactly the kind of piece you'll want to have on hand. In the black version, we've elevated the overall look with a bold washed effect. A subtle climbing-inspired print quietly hints that you're a climber at heart – even if it's not obvious at first sight. Hidden pockets in the side seams then highlight its practical side.



raven
10076928RFX

dusty cedar
10076929RFX





LILLY

NEW

WOMEN'S LIGHTWEIGHT RACERBACK TANK TOP



DESCRIPTION

MAIN: 82% recycled polyester 14% tencel
4% elastane

- breathable
- antimicrobial

INFO

fit: slim
size: 34-42

SIZE 36:
weight: 82 g
back length: 59 cm

FEATURES

- wide neck opening
- full area print
- functional racerback design
- shaped low-hem

PRODUCT DESCRIPTION

The women's Lilly tank is a new lightweight piece made from a sustainable fabric that combines recycled polyester, natural Tencel fiber, and elastane. This blend feels comfortable on the body, offers great stretch, and ensures ease of movement. The fabric is enhanced with Polygiene treatment, which keeps the tank fresh even during active wear. The all-over print gives the tank a distinctive character and sets it apart from other pieces in the collection. The model is designed without an inner bra, so you can wear exactly what suits you underneath. Lilly is perfect for training sessions or hard attempts on warm summer days at the crag.



verdant veil
10076993RFX

vintage garden
10076994RFX

color: vintage garden
The model is 175 cm tall and wears size 36.

NOKO

NEW

WOMEN'S T-SHIRT FOR ALL DAY COMFORT



DESCRIPTION

MAIN: 82% recycled polyester 14% tencel
4% elastane

- breathable
- antimicrobial

INFO

fit: straight
size: 34-44

SIZE 36:
weight: 98 g
back length: 58 cm

FEATURES

- extended-shoulder design
- round neckline
- full area print

PRODUCT DESCRIPTION

The women's Noko T-shirt is a lightweight piece made from a sustainable fabric that combines recycled polyester, natural Tencel fiber, and elastane. This blend feels comfortable on the body, offers great stretch, and ensures ease of movement. The fabric is enhanced with Polygiene treatment, which keeps the T-shirt fresh even during active wear. The T-shirt features a comfortable cut without classic armholes, providing greater freedom of movement while giving it a modern, airy look. The all-over print gives the tank a distinctive character and sets it apart from other pieces in the collection. Noko is just ideal for warm days at the crag.



verdant veil
10077040RFX

vintage garden
10077041RFX

color: verdant veil
The model is 175 cm tall and wears size 36.





ZION

NEW

WOMEN'S DRESS FOR SUMMER DAYS



DESCRIPTION

MAIN: 82% recycled polyester 14% tencel
4% elastane

- breathable
- antimicrobial

INFO

fit: regular
size: 34-42

SIZE 36:
weight: 220 g
back length: 96 cm

FEATURES

- high neckline
- wide crossed back straps
- built in bra with removable pads
- 2 front hand pockets

PRODUCT DESCRIPTION

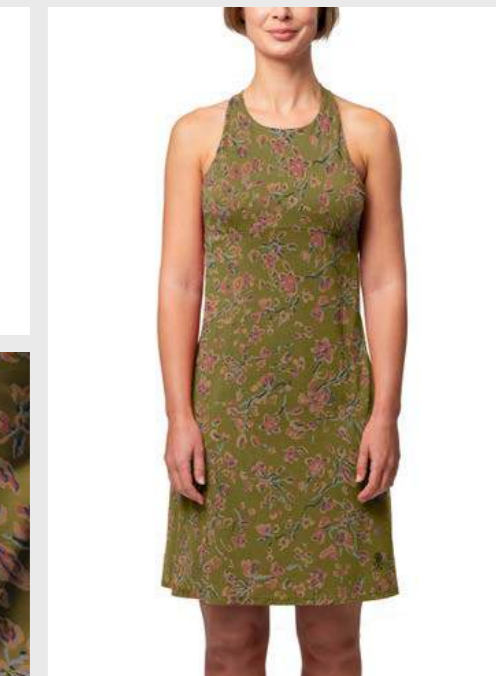
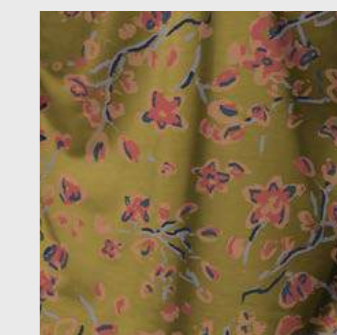
Comfort and style – that's exactly what defines the Zion dress. A perfect piece for your rest day outfit or slow mornings under the crags. The sustainable fabric made from recycled polyester combined with Tencel and elastane feels great on the body, is lightweight and stretchy and keeps you comfortable all day long. Thanks to the Polygiene treatment, it stays fresh for longer even during more active wear. The cut with a distinctive crossed back adds a unique look, while the inner bra with removable cups and hidden pockets in the side seams bring extra practicality. The all-over print then attracts and completes its laid-back, outdoor vibe.



verdant veil
10077098RFX



vintage garden
10077099RFX



color: vintage garden
The model is 175 cm tall and wears size 36.



NAILA

NEW

WOMEN'S ORGANIC TANK TOP FOR ALL DAY COMFORT



DESCRIPTION

MAIN: 100% organic cotton
 SECONDARY: 100% organic cotton (cuffs)
 • breathable

INFO

fit: regular
 size: 34-42
 SIZE 36:
 weight: 85 g
 back length: 56cm

FEATURES

- sleeve less design
- back pleat
- curved low hem
- pointelle construction

PRODUCT DESCRIPTION

The new Naila tank top is made from a unique material that wins you over at first touch. The patterned organic cotton in a pointelle construction is lightweight and breathable, and thanks to its delicate structure with small openings, it almost resembles lace. The fabric feels soft on the body, offers stretch, and is ideal for warmer days. The tank features a relaxed fit with a distinctive slit at the back, adding both airflow and an interesting design detail. The shaped hem sits nicely and enhances the overall silhouette. A lightweight piece you'll appreciate on rest days or whenever you want to slow down after a day spent on the rock.



raven
10077029RFX

rainy day
10077031RFX

mesa rose
10077030RFX

color: mesa rose
The model is 175 cm tall and wears size 36.

TALIA

NEW

WOMEN'S ORGANIC TEE FOR ALL DAY COMFORT



DESCRIPTION

MAIN: 100% organic cotton
 SECONDARY: 100% organic cotton (cuffs)
 • breathable

INFO

fit: regular
 size: 34-44
 SIZE 36:
 weight: 130 g
 back length: 60cm

FEATURES

- dropped shoulders
- round neckline
- sleeve cuffs
- pointelle construction

PRODUCT DESCRIPTION

The new Talia t-shirt is made from a unique material that impress you at first touch. The patterned organic cotton in a pointelle construction is lightweight and breathable, and thanks to its delicate structure with small openings, it almost resembles lace. The fabric feels soft on the body and is ideal for both warmer days and cooler mornings. Relaxed fit with dropped shoulders and a wider neckline, giving it a laid-back look and all-day comfort. The long sleeves are finished with cuffs, emphasizing its clean, simple silhouette. A lightweight piece you'll appreciate on rest days or whenever you want to slow down.



raven
10077079RFX

rainy day
10077081RFX

mesa rose
10077080RFX

color: rainy day
The model is 175 cm tall and wears size 36.





ZENITH W

ALL YEAR

WOMEN'S PERFORMANCE LONG SLEEVE TEE



DESCRIPTION

MAIN: 62% viscose 33% viscose (Cocarber®) 5% elastane

- breathable
- warm

INFO

fit: slim
size: 34-42

SIZE 36:
weight: 160 g
back length: 61 cm

FEATURES

- eco fabric
- round neckline
- thumb hole

PRODUCT DESCRIPTION

Did someone say coffee? That's right — coffee won't just warm your soul anymore, now it can warm your body too. The new women's Zenith W functional shirt is made from Cocarber®, a viscose fiber enriched with carbonized coffee grounds. The result? Excellent thermal insulation and antibacterial properties, odor absorption and neutralization, UV protection, and a production process that's kind to the environment. A stylish sleeve detail completes the look. Now you really can't start your day without coffee!



raven
10070573RFX

raven/tarmac
10070574RFX

color: raven/tarmac
The model is 175 cm tall and wears size 36.

ESTRELLA

ALL YEAR

WOMEN'S LIGHTWEIGHT WARMUP ORGANIC HOODY



DESCRIPTION

MAIN: 92% organic cotton 8% elastane

- breathable
- soft

INFO

fit: regular
size: 34-42

SIZE 36:
weight: 265 g
back length: 66 cm

FEATURES

- eco fabric
- adjustable hood
- full area printing

PRODUCT DESCRIPTION

Estrella is a light and breathable sweatshirt made from organic cotton that is easy to climb in. It's one of the crowd's favorite products, thanks to the material that is pleasant to touch and wear. The use of elastane keeps it sufficiently stretchy. It's a good choice for both warm-ups and warming up right after a climb. Wear it when you are going to the rocks, boulders or a yoga lesson. Its contrasting hood and drawstrings make sure you will catch the eyes of passersby.



north atlantic/cedar
10076946RFX

dusty cedar/atlantic
10076945RFX

sea foam
10076944RFX



color: dusty cedar/atlantic
The model is 175 cm tall and wears size 36.



VEGA W

ALL YEAR

WOMEN'S TECHNICAL FULL-ZIP HOODY



DESCRIPTION	INFO	FEATURES
<p>MAIN: 91% polyester 9% spandex, single grid polar fleece</p> <ul style="list-style-type: none"> breathable warm 	<p>fit: straight size: 34-42</p> <p>SIZE 38: weight: 300 g back length: 61 cm</p>	<ul style="list-style-type: none"> 2-way main zipper 2 front hand pockets chest zip pocket hood with elastic binding partly elasticized cuffs flatlock construction

PRODUCT DESCRIPTION

New women's grid fleece in a clean, minimalist design. A relaxed fit that won't hold you back — not even on those long reaches or tricky moves. Your phone or insurance card can stay safely tucked in the zippered chest pocket, so you won't lose anything important mid-route. The two lower open pockets are zip-free, so nothing digs in under your harness. The hood is made to fit comfortably under a climbing helmet, giving you warmth and freedom in one sleek layer.



dark navy
10070554RFX

plum wine
10070553RFX

burnt olive
10070555RFX

color: burnt olive
The model is 175 cm tall and wears size 36.

ZULU CROP

WOMEN'S CROP ORGANIC COTTON HOODY



DESCRIPTION	INFO	FEATURES
<p>MAIN: 85% organic cotton 15% polyester SECONDARY: 95% cotton 5% elastane (cuffs)</p> <ul style="list-style-type: none"> breathable soft 	<p>fit: regular size: 34-42</p> <p>SIZE 36 weight: 390 g back length: 49 cm</p>	<ul style="list-style-type: none"> eco fabric ribbed sleeve cuffs ribbed bottom hem adjustable hood

PRODUCT DESCRIPTION

We took our unisex Zulu hoodie made from organic cotton and gave it a fresh cut — now it's a women's cropped sweatshirt, built for the crag and the city. Whether you're chalking up for your next route or grabbing coffee post-session, you'll stay comfy and looking sharp. No pockets means nothing's in your way — no bulging phones, no distractions, just clean lines and full freedom of movement. We went with sustainable materials to keep things breathable and light, while making sure your impact on the planet stays as low as your next dyno is high.



raven
10077104RFX

sea foam
10077105RFX

rainy day
10077106RFX

color: raven
The model is 175 cm tall and wears size 36.





MOJARRA

ALL YEAR

WOMEN'S MIDWEIGHT FLANNEL SHIRT



DESCRIPTION

MAIN: 100% cotton
(yarn-dyed plaid twill)
• breathable

INFO

fit: regular
size: 34-42

SIZE 36:
weight: 365 g
back length: 72 cm

FEATURES

- 2 front hand pockets
- chest pockets with single button flap closure
- adjustable button cuffs

PRODUCT DESCRIPTION

Trust us, it's not just sandstone climbers who wear shirts for climbing. This flannel shirt will serve you great as a second layer instead of a sweatshirt. For this purpose, it has two side pockets and, as usually shirts do, two chest pockets with a flap. Small gussets are inserted in the armpit areas for better range of motion and maximum freedom of movement. The sleeve cuffs can be set in two positions.



pink robin plaid
10070526RFX



vari plaid
10070527RFX



color: pink robin plaid
The model is 175 cm tall and wears size 36.



DARCY

ALL YEAR

WOMEN'S LIGHTWEIGHT HYBRID-INSULATED JACKET



DESCRIPTION

MAIN: 100% polyamide, mini ripstop 200, DWR
 SECONDARY: 95% polyester 5% elastane, single grid polar fleece (under arm parts)
 INSULATION: 50% RDS duck down 50% Dupont™ Sorona®
 • insulated

INFO

fit: regular
 size: 34-42
 SIZE 36:
 weight: 480 g
 back length: 66 cm

FEATURES

- 2-way main zipper with internal full length windproof flap
- underarm gussets
- 2 front hand zip pockets
- chest zip pocket
- inner mesh pockets
- adjustable hood
- elasticized cuffs
- ergonomic shaped sleeves
- inner mesh pockets
- compression bag
- climbing grades chart inside

PRODUCT DESCRIPTION

Darcy insulated jacket is based on a model that has been proven over the last years. You will appreciate climber-friendly features like a two-way YKK zipper, a climbing grade chart, two side pockets and one chest pocket, and mesh pockets inside for warming your climbing shoes. The outer material is windproof with a water-resistant finish. Down inside keeps you warm, while Sorona on the outside handles wet conditions and has a low ecological footprint. If you're spending a cozy evening in a bivy or in your climber van, you can pack it into a compression sack and use it as a pillow. Darcy won't let you down!



color: castlerock
 10014918RFX



color: castlerock
 The model is 175 cm tall and wears size 36.

PROJECT W

ALL YEAR

WOMEN'S LIGHTWEIGHT DOWN JACKET



DESCRIPTION

MAIN: 100% recycled polyamide, FD ripstop 200, DWR - CO (PFC free)
 SECONDARY: 100% polyester (inner pockets)
 INSULATION: RDS duck down, fill power 750 cuin, feather ration 90/10
 • insulated

INFO

fit: regular
 size: 34-42
 SIZE 36:
 weight: 317 g
 back length: 67 cm

FEATURES

- 2-way main zipper with internal full length windproof flap
- 2 front hand zip pockets
- chest zip pocket
- inner mesh pockets
- adjustable hood
- elasticized cuffs
- inner microfleece neck panel
- low hem with internal drawcord for adjustment
- compression bag
- climbing grades chart inside

PRODUCT DESCRIPTION

Our all-season down jacket will become your spotter and won't let you down even when others want to stay by the fire. The certified duck down fill and recycled polyamide outer material with a PFC-free DWR treatment are the perfect match for a brisk autumn or cool summer night. Pack the jacket into a compression sack and use it as a pillow as well. Two main zippered pockets and a chest pocket provide enough space for your essentials. A hemmed hood, two-way YKK main zipper and stretch knit cuffs only add to the versatility. The Project W also has Rafiki features like a climbing grade chart or internal pockets for climbing shoes.



color: raven
 10056539RFX

color: lichen
 10056542RFX



color: lichen
 The model is 162 cm tall and wears size 36.



VELLA

ALL YEAR

WOMEN'S SUPER LIGHTWEIGHT MULTISPORT SHORTS



DESCRIPTION	INFO	FEATURES
<p>MAIN: 94% polyamide 6% elastane SECONDARY: 88% polyester 12% elastane (waistband)</p> <ul style="list-style-type: none"> breathable 	<p>fit: straight size: 34-40</p> <p>SIZE 36 weight: 100 g inseam length: 10 cm</p>	<ul style="list-style-type: none"> wide elastic waistband waist drawstring adjustment rear pocket split detail at side seam

PRODUCT DESCRIPTION

These women's lightweight shorts are designed especially for modern bouldering where you need maximum freedom of movement. Whether you're jumping a dyno, running over a fun line, or tuning up technical balancing. Thanks to the stretchy material and wide waistband, you'll have absolute comfort as well. You can definitely pack them in your backpack on your way to warmer climbing destinations when you want to catch some bronze. Plus, they look great so test it out for yourself, give it a try, and if you still don't believe us, just ask a few of your climbing buddies who will surely agree with us, that these shorts fit you great!



brittany blue/magnet 10077087RFX
ash rose/magnet 10077086RFX
india ink 10041639RFX
stargazer/wasabi 10063832RFX

color: stargazer/wasabi
The model is 162 cm tall and wears size 36.

NOIA

ALL YEAR

WOMEN'S SUPER LIGHTWEIGHT MULTISPORT BOYFIT SHORTS



DESCRIPTION	INFO	FEATURES
<p>MAIN: 94% polyamide 6% elastane SECONDARY: 88% polyester 12% elastane (waistband)</p> <ul style="list-style-type: none"> breathable 	<p>fit: boyfriend size: 34-42</p> <p>SIZE 36 weight: 120 g inseam length: 20 cm</p>	<ul style="list-style-type: none"> wide elastic waistband waist drawstring adjustment rear pocket inseam gusset for freedom of movement brush holder

PRODUCT DESCRIPTION

Noia climbing shorts are for all girls who don't want to buy classic men's models anymore but still prefer a wider and longer „boy fit“ cut. Designed for sporty women who are looking for comfort, and convenience, but also a modern and clean design. They are made of an ultra-light, quick-drying material that is also incredibly durable. Climbers from the Czech national sport climbing team have chosen them as their competition shorts and have been wearing them all season to compete for medals at international competitions. You can be sure that if the professionals are happy with them, they won't restrict your climbing movements either.



brittany blue/magnet 10077039RFX
ash rose/magnet 10077038RFX
india ink 10041607RFX
stargazer/wasabi 10063797RFX

color: stargazer/wasabi
The model is 162 cm tall and wears size 36.





MANDREA

WOMEN'S SUPER LIGHTWEIGHT MULTISPORT SKORT



DESCRIPTION

MAIN: 94% polyamide 6% elastane
SECONDARY: 88% polyester 12% elastane (waistband)

- breathable

INFO

fit: straight
size: 34-42

SIZE 36
weight: 180 g
skirt side seam: 35 cm
shorts inseam: 13 cm

FEATURES

- wide elastic waistband
- integrated shorts
- secret thigh pocket

PRODUCT DESCRIPTION

This is a practical climbing skirt with shorts inside for every woman who loves bouldering. Breathable, quick-drying, light and flexible – everything you want for a climbing apparel. The wide waist cuff holds this skirt in place so a climber can do everything she loves with maximum freedom of motion. An interior thigh pocket provides a place for the essentials like keys and a phone. This great-looking climbing skirt should be there in every backpack.



brittany blue/magnet
10076995RFX

india ink
10041568RFX

stargazer/wasabi
10063765RFX

color: stargazer/wasabi
The model is 175 cm tall and wears size 36.

TARRAGONA

WOMEN'S SUPER LIGHTWEIGHT MULTISPORT 3/4 PANTS

ALL YEAR



DESCRIPTION

MAIN: 94% polyamide 6% elastane
SECONDARY: 88% polyester 12% elastane (waistband)

- breathable

INFO

fit: straight
size: 34-42

SIZE 36
weight: 170 g
inseam length: 49 cm

FEATURES

- wide elastic waistband
- waist drawstring adjustment
- 2 front hand pockets
- rear pocket
- inseam gusset for freedom of movement
- ergonomic shaped knee
- partly elasticized cuffs

PRODUCT DESCRIPTION

The women's 3/4 Tarragona trousers will catch your attention at first sight. We've used an ultra-light material which is breathable and quick-drying. Whether you prefer climbing, bouldering or yoga or any other kind of dynamic activity, you'll grow fond of their comfortable fit with multiple functional details like a diamond crotch, shaped knees and legs with elastic cuff in the back to hold them fast above the ankle. And we didn't forget the wide elastic waist that keeps the trousers at place even when you eat more tapas than you should. In three words: multisport capri trousers. So "hola en las rocas, chical"



brittany blue/magnet
10077083RFX

ash rose/magnet
10077082RFX

india ink
10041632RFX

stargazer/wasabi
10063826RFX



color: stargazer/wasabi
The model is 175 cm tall and wears size 36.



FEMIO

WOMEN'S SUPER LIGHTWEIGHT MULTISPORT PANTS

ALL YEAR



DESCRIPTION

MAIN: 94% polyamide 6% elastane
SECONDARY: 88% polyester 12% elastane (waistband)

- breathable

INFO

fit: straight
size: 34-42

SIZE 36
weight: 220 g
inseam length: 80 cm

FEATURES

- wide elastic waistband
- waist drawstring adjustment
- 2 front hand pockets
- rear pocket
- inseam gusset for freedom of movement
- ergonomic shaped knee
- partly elasticized cuffs

PRODUCT DESCRIPTION

Rafiki Femio are ultra-light climbing trousers from new durable and quick-drying material. Thanks to the elastic waist and leg endings they fit all types of body shapes. They are designed for all kinds of climbing both indoor and outdoor or you can pack them up with you whether you go for a slackline in the park or a yoga lesson.



brittany blue/magnet
10076948RFX

ash rose/magnet
10076947RFX

india ink
10041525RFX

stargazer/wasabi
10063729RFX



color: india ink
The model is 175 cm tall and wears size 36.



MISTY LT

WOMEN'S LIGHTWEIGHT COTTON CLIMBING SHORTS



DESCRIPTION

MAIN: 96% cotton 4% elastane
SECONDARY: 88% polyester 12% elastane (waistband)

- breathable

INFO

fit: straight
size: 34-42

SIZE 36:
weight: 170 g
inseam length: 23 cm

FEATURES

- elastic waistband
- 2 front pockets
- 2 rear patch pockets
- inseam gusset for freedom of movement

PRODUCT DESCRIPTION

Misty LT are lightweight women's cotton shorts that we designed specifically for climbing in the hot summer months. The combination of materials, cotton, and elastane, combines light weight, flexibility, and comfort. In short, it'll be hard to find lighter cotton shorts. Thanks to their civilian look, you don't have to worry about what you're going to wear after a day in the crag and you can go straight to town for dinner. Experience the transition in the lightness of cotton climbing clothing for yourself and be indulged by the natural material while you focus your attention on conquering vertical challenges.



india ink
10063784RFX

thai curry
10077016RFX

withered rose
10077014RFX

sagebrush green
10077015RFX

falcon
10077017RFX

color: india ink
The model is 175 cm tall and wears size 36.

MARGA LT

WOMEN'S LIGHTWEIGHT COTTON CLIMBING PANTS



DESCRIPTION

MAIN: 96% cotton 4% elastane
SECONDARY: 88% polyester 12% elastane (waistband)

- breathable

INFO

fit: straight
size: 34-42

SIZE 36:
weight: 230 g
inseam length: 77 cm

FEATURES

- elastic waistband
- 2 front pockets
- 2 rear patch pockets
- gusset for freedom of movement
- ergonomic pre-shaped knees
- elastic back low leg

PRODUCT DESCRIPTION

Rafiki Marga LT, the lightweight women's cotton pants that we have designed for climbing in the hottest months. The combination of materials, elastane, and cotton, combines light weight, flexibility, and comfort. In addition to the chosen materials, the climbing articulated knees, rubber waist cuffs, and elasticated waistband guarantee absolute freedom of movement. The cut of the trousers is designed so that the legs taper downwards, so they won't get in the way even in harder step sequences in a slab. With a civilian look, you don't have to worry about what to wear after a day in the crag and can head straight into town for dinner.



india ink
10063767RFX

thai curry
10076998RFX

withered rose
10076996RFX

sagebrush green
10076997RFX

falcon
10076999RFX

color: india ink
The model is 175 cm tall and wears size 36.





MURIEL

ALL YEAR

WOMEN'S PERFORMANCE CLIMBING SHORTS



DESCRIPTION

MAIN: 97% cotton 3% elastane
SECONDARY: 88% polyester 12% elastane (waistband)

- breathable
- durable

INFO

fit: straight
size: 32-42

SIZE 36
weight: 215 g
inseam length: 24 cm

FEATURES

- wide elastic waistband with internal drawcord
- 2 front hand pockets
- rear pockets
- inseam gusset for freedom of movement
- brush holder

PRODUCT DESCRIPTION

Women's climbing shorts. Comfortable and breathable 97% cotton material with just a bit of elastane, a wide and high waist cuff, and a built-in gusset for maximum range of motion simply guarantee that you will feel great in these shorts during training and sharp attempts. You'll find two front pockets, two back pockets, and a double zig-zag cleaning toothbrush loop. They're the perfect choice for climbing missions, a good workout, a relaxing day in the rocks, a nature walk, a hike around the neighborhood, or any other activity.



hydro
10077027RFX

puritan gray
10077025RFX

india ink
10041601RFX

ash rose
10077026RFX

yam
10077028RFX

color: puritan gray
The model is 162 cm tall and wears size 36.

MASSONE

ALL YEAR

WOMEN'S PERFORMANCE CLIMBING PANTS



DESCRIPTION

MAIN: 97% cotton 3% elastane
SECONDARY: 88% polyester 12% elastane (waistband)

- breathable
- durable

INFO

fit: straight
size: 34-42

SIZE 36
weight: 315 g
inseam length: 77 cm

FEATURES

- wide elastic waistband with internal drawcord
- 2 front hand pockets
- rear pockets
- inseam gusset for freedom of movement
- ergonomic shaped knee
- partly elasticized cuffs
- brush holder

PRODUCT DESCRIPTION

Women's climbing trousers that are stylish, breathable, and resilient. Their narrowed fit is very comfortable, in part due to the flexible material used. They're made for climbing. Naturally, they include features like a wide and comfortable waist cuff, a diamond crotch, shaped knees and legs with elastic cuffs in the back to hold them fast above the ankle. What more could you wish for out on the rocks? You'll also appreciate the double zig-zag toothbrush loop. And if you're climbing without one, think of the loops as decoration.



hydro
10077006RFX

puritan gray
10077004RFX

india ink
10041579RFX

ash rose
10077005RFX

yam
10077007RFX

color: ash rose
The model is 175 cm tall and wears size 36.





JUNO LT

WOMEN'S LIGHTWEIGHT LINEN SHORTS FOR SUMMER CLIMBING



DESCRIPTION

MAIN: 53% linen 45% cotton
2% spandex
SECONDARY: 95% cotton 5% spandex
(waistband)

- breathable

INFO

fit: straight
size: 34-42

SIZE 36
weight: 188 g
inseam length: 20 cm

FEATURES

- adjustable elastic waistband
- 2 front hand pockets
- 2 rear pockets
- inseam gusset for freedom of movement

PRODUCT DESCRIPTION

Meet the ultimate woman summer climbing shorts - Juno LT. Made from a combination of linen, cotton, and spandex, these shorts are perfect for hot weather. The breathable linen fabric will keep you cool and comfortable, while the elastic waistbelt ensures a perfect fit. With their naturally worn look and airy feel, you'll want to wear them all summer long. Plus, the convenient back pockets mean you can bring along your essentials on your climb. Upgrade your summer climbing gear with Juno LT shorts right now.



andesite
10076975RFX

stargazer
10076977RFX

ash rose
10076976RFX

thai curry
10076978RFX

color: andesite
The model is 175 cm tall and wears size 36.

SHIVA LT

WOMEN'S LIGHTWEIGHT LINEN PANTS FOR SUMMER CLIMBING



DESCRIPTION

MAIN: 53% linen 45% cotton
2% spandex
SECONDARY: 95% cotton 5% spandex
(waistband)

- breathable

INFO

fit: straight
size: 34-42

SIZE 36
weight: 300 g
inseam length: 78 cm

FEATURES

- adjustable elastic waistband
- 2 front hand pockets
- 2 rear pockets
- inseam gusset for freedom of movement
- ergonomic shaped knee
- bottom leg with with internal drawcord for adjustment

PRODUCT DESCRIPTION

Our women's climbing pants Shiva LT are the perfect choice for hot summer days. We've made them from a lightweight combination of linen, cotton and spandex, so they're both comfortable and breathable. The linen material gives the pants a naturally worn-in design and you can count on them to keep you comfortable even in hot weather. Thanks to the elasticated waistband, they adapt to every woman's figure. You will also find two classic front pockets, pre-shaped knees, and an internal drawstring on the hem of the legs. Whether you are bouldering or leading, you'll feel comfortable and look just great on the rock.



andesite
10077061RFX

stargazer
10077063RFX

ash rose
10077062RFX

thai curry
10077064RFX

color: andesite
The model is 175 cm tall and wears size 36.





ZANAYA CORD

NEW

WOMEN'S HYBRID CORD PANTS FOR ALL DAY COMFORT



DESCRIPTION

MAIN: 97% cotton 3% spandex
SECONDARY: 97% cotton 3% elastane (part 2)
• breathable
• durable



FEATURES

- 2 front hand pockets
- fly opening
- partly elastic waistband
- waistbelt loops
- inseam gusset for freedom of movement
- ergonomic shaped knee
- low hem with internal drawcord for adjustment

INFO

fit: regular
size: 34-42

SIZE 36:
weight: 366 g
inseam length: 74cm

PRODUCT DESCRIPTION

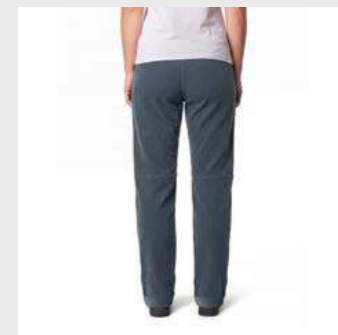
The women's Zanaya Cord pants bring the long-awaited women's version of the popular Ledge model. The stylish combination of corduroy and classic canvas creates a bold contrast and makes them a standout piece. An elastic insert at the back of the waistband ensures a great fit, while the belt loops serve more as a design detail. Distinctive front pockets, partially extending into the side seam, highlight the character of the entire model. You'll also find a zip fly with snap closure, articulated knees, and an inner gusset for maximum freedom of movement, along with adjustable leg hems. Simply put, a stylish piece for everyday climbing and wear.



tarmac
10077095RFX

aluminum
10077096RFX

orion blue
10077097RFX



color: orion blue
The model is 175 cm tall and wears size 36.



WOMEN

FALAISES

ALL YEAR

WOMEN'S LIGHTWEIGHT DENIM SHORTS FOR ALL DAY COMFORT



DESCRIPTION

MAIN: 64% cotton 29,5% polyester 3,5% rayon 2,5% elastane
 SECONDARY: 88% polyester 12% elastane (waistband)

- breathable

INFO

fit: straight
 size: 34-42

SIZE 36
 weight: 160 g
 inseam length: 8 cm

FEATURES

- wide elastic waistband
- 2 front hand pockets
- rear pocket

PRODUCT DESCRIPTION

Women's denim shorts in Rafiki style, which at first glance impress with the unique Rafiki design and decoration. They're great for going out, hitting the wall or going to work or school. They're designed to make you feel comfortable for casual wear, climbing, or even slacklining in the park. So get out there!



denim
 10029673RFX

color: denim
 The model is 175 cm tall and wears size 36.

CHAIN CAPRI

ALL YEAR

WOMEN'S LIGHTWEIGHT CLIMBING DENIM CAPRI PANTS FOR ALL DAY COMFORT



DESCRIPTION

MAIN: 64% cotton 29,5% polyester 3,5% rayon 2,5% elastane
 SECONDARY: 88% polyester 12% elastane (waistband)

- breathable

INFO

fit: straight
 size: 34-42

SIZE 36
 weight: 275 g
 inseam length: 48 cm

FEATURES

- wide elastic waistband with internal drawcord
- 2 front hand pockets
- 2 rear pockets
- inseam gusset for freedom of movement
- doubled knee parts
- brush holder
- partly elasticized cuffs

PRODUCT DESCRIPTION

The Chain Capri women's climbing trousers have a look that blends in and lets you wear them equally well out to the rock walls and boulders or into the city. They're made from ultra-light denim that's flexible, breathable and quick-drying. The wide waist cuff on these trousers makes them a good fit, and their diamond crotch lets you move freely. With their doubled-contoured shaped knees, you can lean onto a rough rock face problem-free. Their leg cuffs are elastic in the back. There's also a fancy toothbrush loop on the side of the thigh. So, are you ready to go?



denim
 10020010RFX



WOMEN



color: denim
 The model is 175 cm tall and wears size 36.



CHAIN

ALL YEAR

WOMEN'S LIGHTWEIGHT CLIMBING DENIM CAPRI PANTS FOR ALL DAY COMFORT



DESCRIPTION

MAIN: 64% cotton 29,5% polyester 3,5% rayon
2,5% elastane
SECONDARY: 88% polyester 12% elastane
(waistband)

- breathable

INFO

fit: straight
size: 34-42

SIZE 36
weight: 335 g
inseam length: 80 cm

FEATURES

- wide elastic waistband with internal drawcord
- 2 front hand pockets
- 2 rear pockets
- inseam gusset for freedom of movement
- doubled knee parts
- brush holder
- partly elasticized cuffs

PRODUCT DESCRIPTION

Climbing pants Chain look just like any other street jeans, yet are the perfect partner for rock climbing. The ultralight denim is stretchy, breathable, and dries up quickly. A wider cuff makes sure the trousers fit well. The inset gusset gives you maximum freedom of movement, which climbers will appreciate. The raised, shaped knees can withstand the rougher treatment on the rock. The lower cuff is elasticated at the back to keep the trousers well above the ankle. However, the elastic is only in the back, so from the front the pants look like normal flared jeans. There's also a fancy toothbrush loop on the side of the thigh. So, are you ready to go?



CARRY OVER
denim
10020011RFX

color: denim
The model is 175 cm tall and wears size 36.

CERRO

ALL YEAR

WOMEN'S CLIMBING DENIM PANTS



DESCRIPTION

MAIN: 52% rayon 28% cotton 19% polyester
1% spandex
SECONDARY: 88% polyester 12% elastane
(waistband)

- comfortable
- durable

INFO

fit: straight
size: 34-42

SIZE 36:
weight: 480 g
inseam length: 79 cm

FEATURES

- wide elastic waistband with internal drawcord
- 2 front hand pockets
- rear pocket
- Inseam gusset for freedom of movement
- ergonomic shaped knee
- brush holder
- partly elasticized cuffs

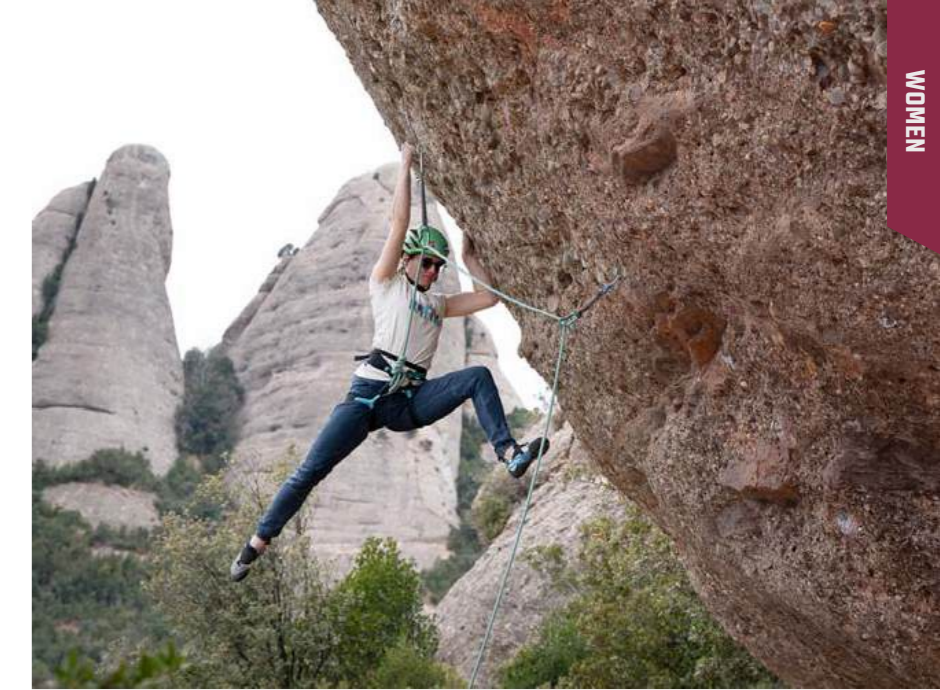
PRODUCT DESCRIPTION

You'll love these women's climbing jeans overtrousers with an elastic waist. They're great for climbing in cold weather, but you'll also look great in them when going to the climbing gym, at work, or wandering around town. We've gone to great lengths to make sure the denim is perfect. The Cerro jeans also feature distinctive pockets, and the bottom hem of the leg is elastic, making it easy to put the jeans on, even when you're wearing climbing shoes. So, are you ready to climb?



CARRY OVER
dark blue denim
10025555RFX

color: dark blue denim
The model is 175 cm tall and wears size 36.





KIMI

ALL YEAR

WOMEN'S LIFESTYLE BARREL JEANS



DESCRIPTION

MAIN: 69% cotton 29% polyester 2 %elastane
 • breathable

INFO

fit: relaxed
 size: 34-42
 SIZE 36:
 weight: 470 g
 inseam length: 73 cm

FEATURES

- cotton stretch fabric
- 2 front hand pockets
- 2 rear pockets
- fly opening
- waistbelt loops

PRODUCT DESCRIPTION

The new women's Kimi jeans in a trendy barrel fit are perfect for city strolls, whether it's a rest day or running errands. They strike the ideal balance between comfort, style, and freedom of movement. Made as lifestyle jeans, but if a challenge comes your way, they've got your back.



light blue denim
 10070521RFX



color: light blue denim
 The model is 175 cm tall and wears size 36.

ROYA

ALL YEAR

WOMEN'S JEGGINGS



DESCRIPTION

MAIN: 69% cotton 29% polyester 2% elastane
 • breathable

INFO

fit: slim
 size: 34-42
 SIZE 36:
 weight: 345 cm
 inseam length: 76 cm

FEATURES

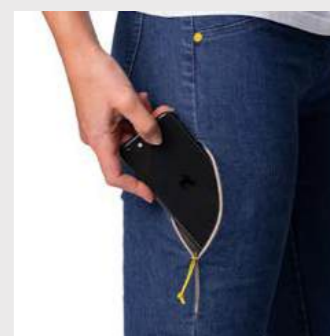
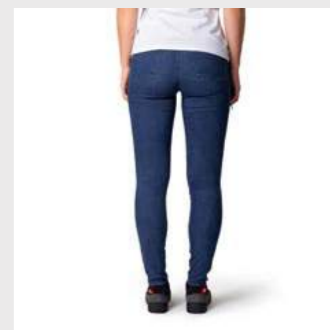
- cotton stretch fabric
- 2 rear pockets
- elastic waistband
- secret thigh pocket

PRODUCT DESCRIPTION

You can never have too many jeans, so we decided to add another pair! The new women's Roya climbing jeggings catch the eye with a sporty design and a signature elastic waistband. What sets them apart? Besides a perfectly tuned fit, they finally come with a zippered thigh pocket. Want a quick anchor selfie? No problem — your phone stays safe and goes up with you wherever you want it!



blue denim
 10070545RFX



color: blue denim
 The model is 175 cm tall and wears size 36.



RAFIKI MEN



ZONE

ALL YEAR

MEN'S PERFORMANCE LIGHTWEIGHT SHORT SLEEVE TEE



DESCRIPTION

MAIN: 50% modal 50% organic cotton

- breathable
- soft

INFO

fit: straight
size: S-XXL

SIZE M:
weight: 113 g
back length: 69 cm

FEATURES

- eco fabric
- natural touch

PRODUCT DESCRIPTION

Lightweight and breathable mono-chromatic Zone T-shirt is here for all of you. The environmentally sustainable Lenzing Modal® material is incredibly light, breathable, and comfortable, but it is also a material of the future that is as environmentally friendly as possible. It is made from beech pulp in nearby Austria. It is certified as compostable and biodegradable both industrially and at home and can be completely lost in nature again without any residue. A piece you'll love for training or outdoor climbing. It's up to you what route you will choose. So choose sustainability in our Zone natural t-shirt.



raven/sagebrush
10077100RFX

dusty cedar/raven
10077101RFX

sagebrush green/raven
10077102RFX

desert taupe/raven
10077103RFX

color: sagebrush green/raven
The model is 185 cm tall and wears size M.

MARGALEF

NEW ALL YEAR

MEN'S PERFORMANCE LIGHTWEIGHT LONG SLEEVE TEE



DESCRIPTION

MAIN: 50% modal 50% organic cotton

- breathable
- soft

INFO

fit: straight
size: XS-XXL

SIZE M:
weight: 150 g
back length: 69 cm

FEATURES

- functional fabric
- natural touch

PRODUCT DESCRIPTION

The Margalef long-sleeve doesn't just take its name from a climbing area — it lives up to it. Light, breathable, and built to keep you comfortable, without a single compromise. Clean design, standout colors, and a premium blend of Lenzing Modal® and organic cotton deliver next-level softness, breathability, and all-day comfort. From training sessions to long days on the rock (or anywhere in between), Margalef is ready when you are. All that's left is to pick your route.



raven/sagebrush
10077000RFX

dusty cedar/raven
10077001RFX

sagebrush green/raven
10077002RFX

desert taupe/raven
10077003RFX

color: raven/sagebrush
The model is 185 cm tall and wears size M.





MOOD

NEW **ALL YEAR**

MEN'S PERFORMANCE ULTRALIGHT TOP



DESCRIPTION

MAIN: 80% recycled polyester 20% elastane
 • breathable

INFO

fit: regular
 size: XS-XXL

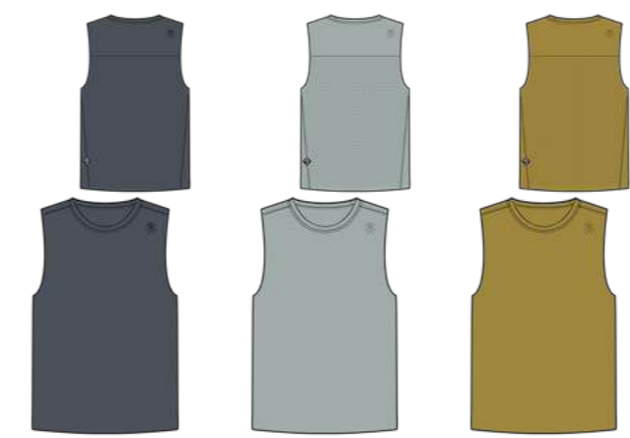
 SIZE M:
 weight: 65 g
 back length: 65 cm

FEATURES

- flat taped seams
- round neckline
- wide arm opening

PRODUCT DESCRIPTION

The new Rafiki Mood climbing tank is made for every project and training session. The lightweight fabric, a blend of recycled polyester and spandex, feels great on the body, offers stretch, and dries quickly-so when you really push yourself on the wall or out on the rocks, it practically dries as you go. The flowing cut fits well and doesn't restrict your movement. The minimalist design is complemented by a fully perforated back panel for maximum breathability, while bonded armholes highlight the technical nature of the piece and contribute to its clean, functional finish. Stay cool, stay in the Mood.



india ink
10077019RFX

puritan gray
10077018RFX

amber green
10077020RFX



color: puritan gray
 The model is 185 cm tall and wears size M.



ARCOS

ALL YEAR

MEN'S ORGANIC SHORT SLEEVE TEE



DESCRIPTION

MAIN: 100% organic cotton, single jersey

- breathable
- soft

INFO

fit: regular
size: XS-XXL

SIZE M
weight: 135 g
back length: 68 cm

FEATURES

- eco fabric
- prints variation

PRODUCT DESCRIPTION

Classic and comfortable, the Rafiki Arcos men's t-shirt made from 100% organic cotton. The Arcos T-shirts are the new successors to the previously popular model Slack and come with a wide range of colours to choose from. Arcos are inspired by climbing patterns and themes. Are you on the way to „send“ your project? Climb a difficult roof or overhang? Do you love the „climbing lifestyle“ and all that goes with it? Check out the new prints and impress both yourself and your climbing fellas. And not only in Arco!



raven
10076922RFX

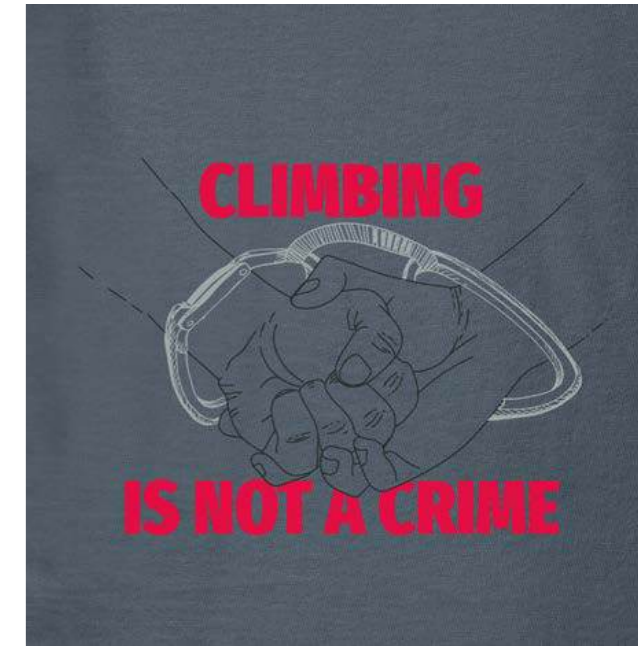
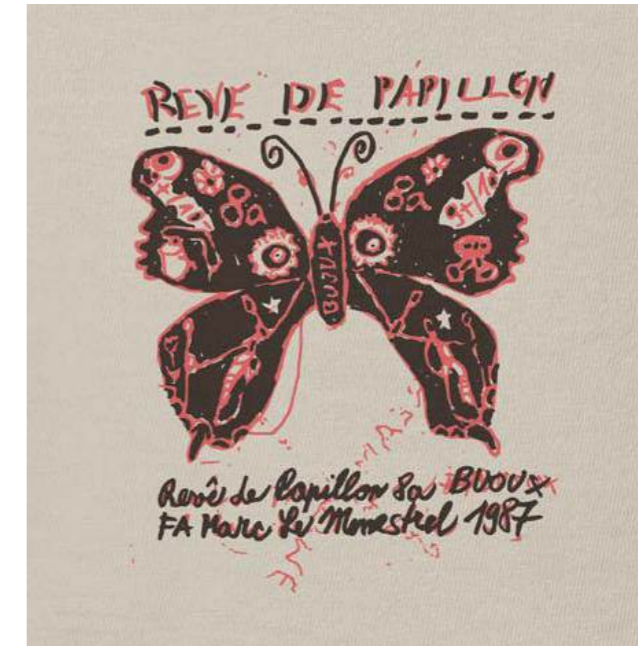
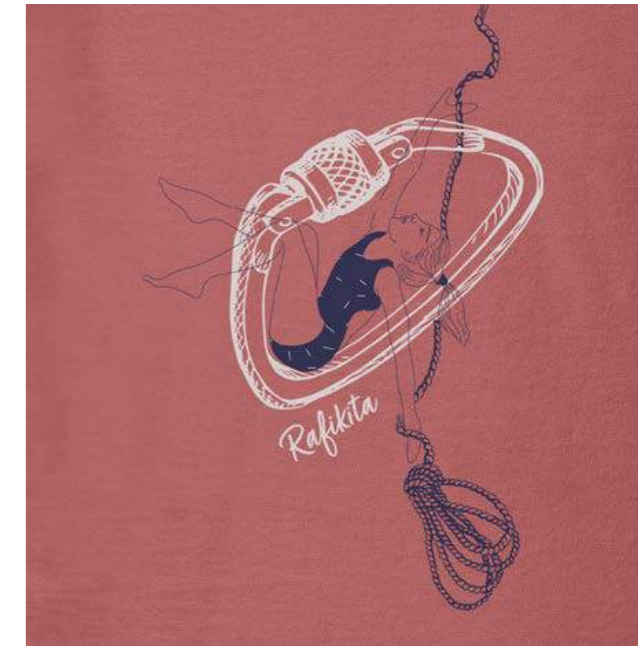
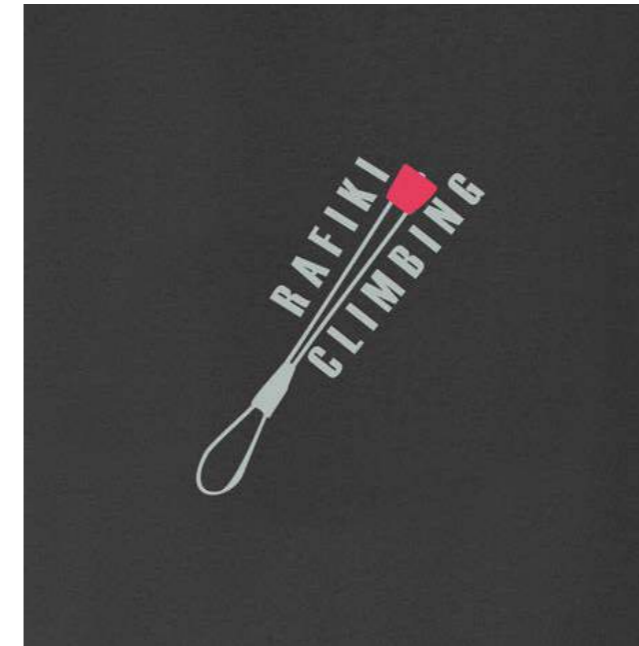
puritan gray
10076924RFX

dusty cedar
10076925RFX

caramel
10076926RFX

rainy day
10076927RFX

stormy weather
10076923RFX



color: puritan gray
The model is 185 cm tall and wears size M.



SLAB LT

ALL YEAR

MEN'S LIGHTWEIGHT ORGANIC TANK TOP



DESCRIPTION

MAIN: 100% organic cotton
• breathable

INFO

fit: straight
size: S-XL

SIZE M
weight: 94 g
back length: 65 cm

FEATURES

- eco fabric
- chest pocket

PRODUCT DESCRIPTION

Slab LT is a lightweight men's tank top made of 100% organic cotton that will cover your back even on the hottest summer days. The material and cut are designed to give you the least restriction of movement and provide you with perfect flexibility for climbing. The material used in the Rafiki Slab LT is soft and extremely comfortable. The contrasting colour of the chest pocket, the tiny „Rafiki-doll“ on the front side near the shoulder, along the large Rafiki climbing print on the back – all of this adds to its attractiveness. If you're looking for a tank top for your projects on the hottest days, the Slab LT is must have!



raven
10077065RFX

stargazer
10077067RFX

thai curry
10077068RFX

puritan gray
10077066RFX

color: thai curry
The model is 185 cm tall and wears size M.

GRANITE

ALL YEAR

MEN'S LIGHTWEIGHT ORGANIC SHORT SLEEVE TEE



DESCRIPTION

MAIN: 100% organic cotton
• breathable

INFO

fit: regular
size: XS-XXL

SIZE M
weight: 116 g
back length: 68 cm

FEATURES

- eco fabric

PRODUCT DESCRIPTION

The Granite T-shirt is breathable and pleasant to the touch, plus it's very comfortable, so you'll love it for casual days and climbing trips as well. Thanks to the sustainable material, you can also feel good that you have put as little burden on nature as possible by buying it. The original color combinations on the sleeves and the distinctive Rafiki logo on the back make it a shirt for anyone who wants to stand out among climbers. Whether you're having a „rest-day“ or pushing your vertical limits, the Granite will quickly become your first choice. Throw it on and go fight gravity!



puritan gray/curry/stargazer
10076961RFX

stargazer/gray/curry
10076962RFX

raven/stargazer
10076960RFX

thai curry/stargazer/raven
10076963RFX

color: puritan gray/curry/stargazer
The model is 185 cm tall and wears size M.





GRAB LT

MEN'S LIGHTWEIGHT ORGANIC SHORT SLEEVE TEE FOR CLIMBING AND LEISURE



DESCRIPTION

MAIN: 100% organic cotton
• breathable

INFO

fit: regular
size: XS-XXL

SIZE M
weight: 115 g
back length: 68 cm

FEATURES

- eco fabric
- chest pocket

PRODUCT DESCRIPTION

Men's Rafiki Grab LT is a comfortable t-shirt made from 100% organic cotton in a classic fit with a chest pocket and a very soft and elegant design. The low weight and breathable natural material make it a great choice for hot summer days. The Rafiki Grab LT will simply keep you comfortable all day long, wherever your adventures take you. The Grab LT gives you a more civilian look that you can grab and go not only to the boulder gym or to the crag but also for a business meeting or an afternoon walk around town. So don't wait for anything and „GRAB IT“, right now!



puritan gray/stargazer/raven
10076958RFX

raven/gray/curry
10076957RFX

stargazer/raven/curry
10076959RFX

ZENITH M

MEN'S PERFORMANCE LONG SLEEVE TEE

ALL YEAR



DESCRIPTION

MAIN: 62% viscose 33% viscose (Cocarber®)
5% elastane
• warm
• breathable

INFO

fit: slim
size: S-XXL

SIZE M:
weight: 185 g
back length: 66 cm

FEATURES

- eco fabric
- round neckline
- thumb hole

PRODUCT DESCRIPTION

Did someone say coffee? That's right — coffee won't just warm your soul anymore, it can warm your body too. The new men's Zenith functional shirt is made from Cocarber®, a viscose fiber enriched with carbonized coffee grounds. The result? Excellent thermal insulation and antibacterial properties, odor absorption and neutralization, UV protection, and a production process that's gentle on the environment. Now you really can't start your day without coffee!



raven
10070571RFX

raven/tarmac
10070572RFX



color: raven
The model is 185 cm tall and wears size M.

color: puritan gray/stargazer/raven
The model is 185 cm tall and wears size M.



TRAVERSE

ALL YEAR

MEN'S LIGHTWEIGHT WARMUP ORGANIC HOODY



DESCRIPTION

MAIN: 92% organic cotton 8% elastane

- breathable
- soft

INFO

fit: regular
size: XS-XXL

SIZE M:
weight: 320 g
back length: 78 cm

FEATURES

- adjustable hood
- distinct Rafiki logo
- eco fabric

PRODUCT DESCRIPTION

A lightweight and breathable organic cotton sweatshirt that you'll appreciate especially during your warm-up or when you finish your climbing session and need to get warmer. But you can climb in it too, thanks to the elastane it's stretchy enough. The material is incredibly comfortable to the touch and will ensure that you won't want to take this sweatshirt off. The contrasting hood and drawstrings tell everyone you're part of the Rafiki gang. So whether you're traversing a meter off the ground or halfway up the wall on El Cap, our lightweight cotton sweatshirt will keep you comfortable.



stargazer/ink
10077084RFX

north atlantic/ink
10077085RFX

india ink (tobacco)
10052623RFX

dried tobacco/ink
10052625RFX

color: india ink (tobacco)
The model is 185 cm tall and wears size M.

VEGA M

ALL YEAR

MEN'S TECHNICAL FULL-ZIP HOODY



DESCRIPTION

MAIN: 91% polyester 9% spandex,
single grid polar fleece

- breathable
- warm

INFO

fit: straight
size: S-XXL

SIZE L:
weight: 350 g
back length: 69 cm

FEATURES

- 2-way main zipper
- 2 front hand pockets
- chest zip pocket
- hood with elastic binding
- partly elasticized cuffs
- flatlock construction

PRODUCT DESCRIPTION

New men's grid fleece in a clean, minimalist design. A relaxed fit that won't hold you back — not even on those long reaches or tricky moves. Your phone or insurance card can stay safely tucked in the zippered chest pocket, so you won't lose anything important mid-route. The two lower open pockets are zip-free, so nothing digs in under your harness. The hood is made to fit comfortably under a climbing helmet, giving you warmth and freedom in one sleek layer.



dark navy
10070550RFX

ginger bread
10070552RFX

burnt olive
10070551RFX

color: ginger bread
The model is 185 cm tall and wears size M.





ZULU UNI

UNISEX PULLOVER ORGANIC HOODIE



DESCRIPTION

MAIN: 85% organic cotton 15% polyester
 SECONDARY: 95% cotton 5% elastane (cuffs)

- breathable
- soft

INFO

fit: regular
 size: XS-XXL

SIZE M
 weight: 551 g
 back length: 70 cm

FEATURES

- eco fabric
- kangaroo pocket
- ribbed sleeve cuffs
- ribbed bottom hem
- adjustable hood

PRODUCT DESCRIPTION

Meet our unisex organic hoodie, Zulu. Made from a blend of organic cotton and polyester, this hoodie is both comfortable and durable. With muted colors and decent patterns, it's perfect for casual wear or climbing trips. Zulu is perfect for layering and will keep you warm on cold days in the crags. Its versatile design makes it a great choice for both men and women. The Zulu has an adjustable hood, kangaroo-style main pocket, ribbed hem, and sleeve cuffs. We've used eco-friendly material to ensure the best possible breathability while giving you peace of mind that you're not putting more strain on nature than necessary with your purchase.



color: raven
 10077107RFX

color: rainy day
 10077108RFX

color: raven
 The model is 185 cm tall and wears size M.

VIRAGE

ALL YEAR

MEN'S MIDWEIGHT FLANNEL SHIRT



DESCRIPTION

MAIN: 100% cotton (yarn-dyed plaid twill)

- breathable

INFO

fit: regular
 size: S-XXL

SIZE M:
 weight: 485 g
 back length: 74 cm

FEATURES

- 2 front hand pockets
- chest pockets with single button flap closure
- underarm gussets
- adjustable button cuffs

PRODUCT DESCRIPTION

Virage is perfect for all climbers who like to add a touch of casual elegance to their outfit. This medium-weight flannel shirt will serve you great as a second layer instead of a sweatshirt. For this purpose, it has two side pockets and, as usually shirts do, two chest pockets with a flap. Small gussets are inserted in the armpit areas for better range of motion and maximum freedom of movement. The sleeve cuffs can be set in two positions.



color: tiger plaid
 10070561RFX

color: vari plaid
 10070560RFX



color: tiger plaid
 The model is 185 cm tall and wears size M.



DANTE

ALL YEAR

MEN'S LIGHTWEIGHT HYBRID-INSULATED JACKET



DESCRIPTION

MAIN: 100% polyamide, mini ripstop 20D, DWR
 SECONDARY: 95% polyester 5% elastane, single grid polar fleece (under arm parts)
 INSULATION: 50% RDS duck down 50% Dupont™ Sorona®
 • insulated

INFO

fit: regular
 size: S-XXL
 SIZE M:
 weight: 545 g
 back length: 70 cm

FEATURES

- 2-way main zipper with internal full length windproof flap
- underarm gussets
- 2 front hand zip pockets
- chest zip pocket
- inner mesh pockets
- adjustable hood
- elasticized cuffs
- ergonomic shaped sleeves
- compression bag
- climbing grades chart inside

PRODUCT DESCRIPTION

Dante insulated jacket is based on a model that has been proven over the last years. You will appreciate climber-friendly features like two-way YKK zipper, a climbing grade chart, two side pockets and one chest pocket, and mesh pockets inside for warming your climbing shoes. The outer material is windproof with a water-resistant finish. Down inside keeps you warm, while Sorona on the outside handles wet conditions and has a low ecological footprint. If you're spending a cozy evening in a bivvy or in your climber van, you can pack it into a compression sack and use it as a pillow. Dante won't let you down!



color: cress green/castlerock
 10047548RFX

color: cress green/castlerock
 The model is 185 cm tall and wears size M.

PROJECT M

ALL YEAR

MEN'S LIGHTWEIGHT DOWN JACKET



DESCRIPTION

MAIN: 100% recycled polyamide, FD ripstop 20D, DWR - CO (PFC free)
 SECONDARY: 100% polyester (inner pockets)
 INSULATION: RDS duck down, fill power 750 cuin, feather ration 90/10
 • insulated

INFO

fit: regular
 size: S-XXL
 SIZE M:
 weight: 412 g
 back length: 74 cm

FEATURES

- 2-way main zipper with internal full length windproof flap
- 2 front hand zip pockets
- chest zip pocket
- inner mesh pockets
- adjustable hood
- elasticized cuffs
- inner microfleece neck panel
- low hem with internal drawcord for adjustment
- compression bag
- climbing grades chart inside

PRODUCT DESCRIPTION

Our all-season down jacket will become your spotter and won't let you down even when others want to stay by the fire. The certified duck down fill and recycled polyamide outer material with a PFC-free DWR treatment are the perfect match for a brisk autumn or cool summer night. Pack the jacket into a compression sack and use it as a pillow as well. Two main zippered pockets and a chest pocket provide enough space for your essentials. A hemmed hood, two-way YKK main zipper and stretch knit cuffs only add to the versatility. The Project also has Rafiki features like a climbing grade chart or internal pockets for climbing shoes.



raven
 10056535RFX

stargazer
 10056536RFX

autumn glaze
 10056537RFX



color: raven
 The model is 185 cm tall and wears size M.



MEN

LEAD II

MEN'S SUPER LIGHTWEIGHT MULTISPORT SHORTS

ALL YEAR



DESCRIPTION

MAIN: 94% polyamide 6% elastane
• breathable

INFO

fit: regular
size: XS-XL

SIZE M
weight: 180 g
inseam length: 31 cm

FEATURES

- wide elastic waistband
- waist drawstring adjustment
- side pocket
- rear pocket
- inseam gusset for freedom of movement
- back loop detail

PRODUCT DESCRIPTION

The Rafiki Lead II men's climbing shorts are made of ultra-light, quick-drying material that is also incredibly durable. So they're an obvious choice for hot summer days in the crags, crowded climbing gym, or poorly ventilated basement room where you're training hard for your dream climbing projects. Climbers from the Czech national sport climbing team have chosen them as their competition shorts and have been wearing them all season to compete for medals at international competitions. You can be sure that if the professionals are happy with them, they won't restrict your climbing movements either.



stargazer/ink
10063762RFX

thai curry/ink
10076992RFX

india ink
10041565RFX

chili oil/ink
10076991RFX

andesite/ink
10076990RFX

MOONSTONE LT

MEN'S SUPER LIGHTWEIGHT MULTISPORT 3/4 PANTS

ALL YEAR



DESCRIPTION

MAIN: 94% polyamide 6% elastane
• breathable

INFO

fit: straight
size: XS-XL

SIZE M
weight: 209 g
inseam length: 47 cm

FEATURES

- wide elastic waistband
- waist drawstring adjustment
- 2 front hand pockets
- rear pocket
- inseam gusset for freedom of movement
- ergonomic shaped knee
- brush pocket
- back loop detail

PRODUCT DESCRIPTION

Rafiki Moonstone LT are light and airy 3/4 climbing trousers with the elastic waist which are ideal for those who prefer mid length trousers for climbing. Now with slimmer legs so you can see your feet on sketchy edges, redesigned rear panel adds mobility where it counts. They keep your knees perfectly tucked in and prevent you from scraping on sharp lime or bruising on rough coarse granite. The trousers have a small pocket for a cleaning brush, a loop for a chalk bag, and a drawstring waist, as well as at the ends of the ergonomically shaped legs.



stargazer/ink
10063789RFX

chili oil/ink
10077022RFX

india ink
10063787RFX

andesite/ink
10077021RFX



MEN



color: india ink
The model is 185 cm tall and wears size M.

color: stargazer/ink
The model is 185 cm tall and wears size M.



DRIVE LT

ALL YEAR

MEN'S SUPER LIGHTWEIGHT MULTISPORT PANTS



DESCRIPTION

MAIN: 94% polyamide 6% elastane
 • breathable

INFO

fit: straight
 size: XS-XL
 SIZE M
 weight: 263 g
 inseam length: 82 cm

FEATURES

- wide elastic waistband
- waist drawstring adjustment
- 2 front hand pockets
- inseam gusset for freedom of movement
- ergonomic shaped knee
- brush pocket and holder
- bottom leg with with internal drawcord for adjustment
- back loop detail
- rear pocket

PRODUCT DESCRIPTION

Our popular Drive light weight trousers have been a stable piece for several years. That's why we decided to give them a little facelift. One of the inspirations for us were the comments of the Czech national team, who is wearing them. Same material, new fit. Now with slimmer legs so you can see your feet on sketchy edges. and the original back seat panel. The redesigned rear panel adds mobility where it counts, and we tweaked the pocket access too – because when the send turns into a whimper, your tissue should be close at hand.



stargazer/ink
10063723RFX

chili oil/ink
10076943RFX

india ink
10063721RFX

andesite/ink
10076942RFX

color: stargazer/ink
The model is 185 cm tall and wears size M.

RIDGE LT

NEW ALL YEAR

MEN'S PERFORMANCE LIGHTWEIGHT PANTS



DESCRIPTION

MAIN: 94% polyamide 6% elastane
 • breathable

INFO

fit: regular
 size: S-XXL
 SIZE M:
 weight: 267 g
 back length: 81 cm

FEATURES

- 2 front hand pockets
- thigh pocket
- fly opening
- adjustable partly elastic waistband
- inseam gusset for freedom of movement
- ergonomic shaped knee
- brush pocket
- low hem with internal drawcord for adjustment

PRODUCT DESCRIPTION

Ridge LT pants bring functional details that every climber will appreciate. Made from a lightweight, durable and stretchy blend of polyamide and elastane, they handle tough moves just as well as chill days at the crag. A technical cut, articulated knees and a generous gusset give you maximum freedom, even in the most awkward sequences. The elastic waistband with adjustable fit keeps everything exactly where it should be. You'll also find the details that matter – a brush pocket, a zipped thigh pocket (because an anchor selfie is necessary), and adjustable leg hems so you can spot even those damn micro footholds.



andesite
10077051RFX

thai curry
10077054RFX

stargazer
10077052RFX

india ink
10077053RFX

color: andesite
The model is 185 cm tall and wears size M.





MATTO LT

MEN'S LIGHTWEIGHT COTTON CLIMBING SHORTS



DESCRIPTION

MAIN: 96% cotton 4% elastane
• breathable

INFO

fit: straight
size: S-XXL

SIZE M:
weight: 214 g
inseam length: 33 cm

FEATURES

- 2 front pockets
- 2 rear pockets
- elastic waistband
- inseam gusset for freedom of movement
- fly opening
- waistbelt loops
- brush holder

PRODUCT DESCRIPTION

Cotton, lightweight, and shorter cut. Matto LT are lightweight men's cotton shorts designed specifically for climbing in the hot summer months. The combination of cotton and elastane, brings light weight, flexibility, and comfort without restrictions of movement. The Matto LT will additionally offer you a number of functional and design details, such as a tiny „Rafiki“ logo, designer but functional belt loops, or an elastic waistband with a drawstring. Thanks to their civil look, you don't have to worry about what to wear after a day in the crag and you can go straight to town for dinner.



india ink
10063774RFX

tapenade
10077011RFX

sagebrush green
10077008RFX

thai curry
10077009RFX

falcon
10077010RFX

color: india ink
The model is 185 cm tall and wears size M.

ORCO LT

MEN'S LIGHTWEIGHT COTTON CLIMBING TROUSERS WITH TIME-TESTED CUT



DESCRIPTION

MAIN: 96% cotton 4% elastane
• breathable

INFO

fit: straight
size: S-XXL

SIZE M:
weight: 283 g
inseam length: 82 cm

FEATURES

- 2 front hand pockets
- 2 rear pockets
- elastic waistband
- inseam gusset for freedom of movement
- fly opening
- waistbelt loops
- ergonomic shaped knee
- brush holder
- low hem with internal drawcord for adjustment

PRODUCT DESCRIPTION

If you are a climber who prefers to climb in long pants even on warm summer days, the Orco LT climbing pants are the ideal choice. The combination of elastane and cotton, combines light weight, flexibility and comfort. In addition to the chosen materials, the climbing articulated knees, rubber waist cuffs and elasticated waistband guarantee absolute freedom of movement. The cut of the trousers is designed so that the legs taper downwards, so they won't get in the way even in harder step sequences in a slab. With a civilian look, you don't have to worry about what to wear after a day in the rocks and can head straight into town for dinner.



india ink
10063800RFX

tapenade
10077048RFX

sagebrush green
10077045RFX

thai curry
10077046RFX

falcon
10077047RFX

color: india ink
The model is 185 cm tall and wears size M.





MEN

MEGOS

ALL YEAR

MEN'S COTTON PERFORMANCE CLIMBING SHORTS



DESCRIPTION

MAIN: 97% cotton 3% elastane

- breathable
- durable

INFO

fit: regular
size: XS-XL

SIZE M
weight: 225 g
inseam length: 31 cm

FEATURES

- adjustable elastic waistband
- 2 front hand pockets
- inseam gusset for freedom of movement
- brush pocket
- back loop detail

PRODUCT DESCRIPTION

Men's climbing shorts, that are a clear choice for all lead climbers or bouldering enthusiasts! The combination of cotton and elastane guarantees flexibility, breathability, comfort, and absolutely no restrictions during demanding climbing sequences. The Megos shorts are based on our tried-and-tested cut, and the elastic drawcord waist ensures your comfort. A pair of shorts you can rely on, and it doesn't matter whether you want to attempt „Perfecto Mundo“ or „Fight Club“ like Alex Megos, or just want to enjoy a nice relaxing day of climbing in the sun in the crag.



color: chili oil/graphite
1006377RFX

color: hydro/olive
10077012RFX

color: blue graphite/ink
10063776RFX

color: olive oil/graphite
10077013RFX

color: chili oil/graphite
The model is 185 cm tall and wears size M.

CRUX

MEN'S COTTON SHORTS FOR CLIMBING AND LEISURE



DESCRIPTION

MAIN: 97% cotton 3% elastane

- breathable
- durable

INFO

fit: regular
size: S-XXL

SIZE M
weight: 325 g
inseam length: 31 cm

FEATURES

- 2 front hand pockets
- 2 rear pockets
- side pocket
- partly elastic waistband
- inseam gusset for freedom of movement
- waistbelt loops
- brush holder

PRODUCT DESCRIPTION

Looking for a universal shorts you can wear anywhere anytime without looking like a stray climber? The men's Crux shorts in restrained colors have a classic fly and they are made of a combination of cotton and elastane. This tougher and durable material with great tensile strength can withstand even rough handling. An added gusset gives you more freedom of movement. The shorts have two spacious pockets in the front with prominently trimmed openings and raw edges, two smaller in the back, one on the thigh, and the sixth one specially designated for a toothbrush. It's cleverly hidden on a side, as a part of a main pocket. How cool is that?



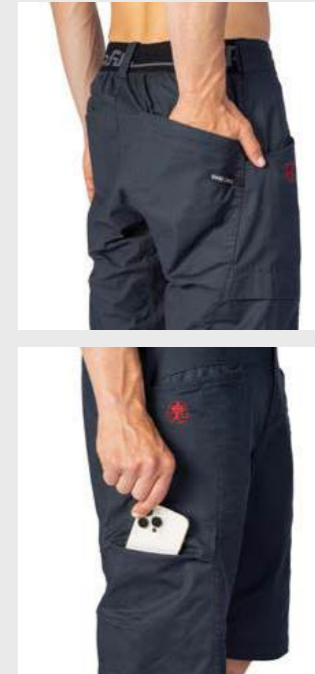
color: aluminum/graphite
10076937RFX

color: hydro/graphite
10076936RFX

color: blue graphite
10052645RFX



MEN



color: blue graphite
The model is 185 cm tall and wears size M.



CLIFFBASE

MEN'S COTTON PERFORMANCE CLIMBING CAPRI PANTS



DESCRIPTION

MAIN: 97% cotton 3% elastane

- breathable
- durable

INFO

fit: regular
size: XS-XL

SIZE M
weight: 280 g
inseam length: 47 cm

FEATURES

- adjustable partly elastic waistband
- 2 front hand pockets
- rear pocket
- inseam gusset for freedom of movement
- Velcro fly opening
- ergonomic shaped knee
- brush pocket and holder

PRODUCT DESCRIPTION

A tried and tested combination of 97% cotton with just a bit of elastane and 3/4 length of the legs. These are the Rafiki three-quarter Cliffbase trousers. They will please absolutely everyone who likes a shorter style of trousers. They'll be great to use on a spring climbing trip to Arco, Italy, or at the „Cliffbase“ climbing base in Hvar, Croatia, which was a big inspiration for us while creating, this piece that is perfectly suitable for all your vertical adventures on the sharp limestone, or any other rock type. You'll have to test them out for yourself on the rock of your choice.



olive oil/graphite
10076932RFX

tarmac/graphite
10076930RFX

orion blue/graphite
10076931RFX

color: tarmac/graphite
The model is 185 cm tall and wears size M.

RUNOUT

ALL YEAR

MEN'S COTTON CLIMBING PANTS WITH TIME-TESTED CUT



DESCRIPTION

MAIN: 97% cotton 3% elastane

- breathable
- durable

INFO

fit: regular
size: XS-XXL

SIZE M:
weight: 389 g
inseam length: 82 cm

FEATURES

- 2 front pockets
- rear pockets
- adjustable elastic waistband
- inseam gusset for freedom of movement
- low hem with internal drawcord for adjustment
- fly opening
- ergonomic shaped knee
- brush holder

PRODUCT DESCRIPTION

If you're looking for original pieces that stand out from our colorful collection, you've come to the right place. We bring you the „old school“ Runout cotton climbing pants. This piece has one goal and that is to return to the roots of climbing clothing. There are articulated knees based on sewn-in gussets, or a durable and stiffer bent rubber waistband that is tighter and more supportive. The trousers have leg drawstrings on the outside, a hidden small pocket for a brush, and deep pockets so you won't just lost something. Cotton with a touch of elastane makes the Runouts the obvious choice for a versatile climbing pant without compromise.



chili oil
10063811RFX

tarmac
10077058RFX

yam
10077059RFX

orion blue
10077060RFX

color: chili oil
The model is 185 cm tall and wears size M.





CRAG

ALL YEAR

MEN'S COTTON PERFORMANCE CLIMBING PANTS


DESCRIPTION

MAIN: 97% cotton 3% elastane

- breathable
- durable

INFO

 fit: regular
size: XS-XL

 SIZE M
weight: 415 g
inseam length: 83 cm

FEATURES

- 2 front hand pockets
- side zip pocket
- adjustable elastic waistband
- inseam gusset for freedom of movement
- doubled knee parts
- waistbelt loops
- low hem with internal drawcord for adjustment
- brush holder
- fly opening
- ergonomic shaped knee

PRODUCT DESCRIPTION

The men's climbing trousers took the best out of the Megos shorts and belong among Rafiki's top products. The combination of cotton and elastane is firm but stretchy and the trousers are ideal for climbing, with doubled pre-shaped knees enhancing durability. Thanks to the elaborated fit you have absolute freedom of movement. Spacious front pockets can hold all your essentials, a toothbrush pocket is a must-have and you can easily stow your phone into a little thigh-side zip pocket which you can easily access even when sitting in a harness. The trousers have a fly, elastic waist, and belt loops.


 aluminum/graphite
10076935RFX

 blue graphite
10052655RFX

 hydro/olive
10076933RFX

 chili oil/graphite
10063717RFX

 olive oil/graphite
10076934RFX

 color: blue graphite
The model is 185 cm tall and wears size M.



MEN

VENGA

NEW

MEN'S CLIMBING SHORTS FOR ALL DAY COMFORT



DESCRIPTION

MAIN: 62% lyocell 35% cotton 3% spandex

- breathable
- durable

INFO

fit: regular
size: S-XXL

SIZE M:
weight: 305 g
back length: 31 cm

FEATURES

- top-entry hand pockets
- 2 rear pockets
- thigh pocket
- fly opening
- partly elastic waistband
- inseam gusset for freedom of movement
- waistbelt loops

PRODUCT DESCRIPTION

jVenga, venga! These pants are made for you to send your projects. Comfortable, soft, and built to last – thanks to a blend of lyocell, cotton, and Spandex. An elastic insert at the back of the waistband ensures a perfect fit, while the gusseted crotch gives you the freedom you need for high steps and tricky moves. And if you decide to take them into the city, you'll appreciate the practical details – two front pockets, two back pockets, and an extra thigh pocket for your phone, keys, or credit card. The clean, casual look is finished with a zip fly and snap closure. So come on – send it.



tarmac
10077088RFX

ginger bread
10077090RFX

antique bronze
10077091RFX

sagebrush green
10077089RFX

color: ginger bread
The model is 185 cm tall and wears size M.

LAMAR

NEW

MEN'S PERFORMANCE CLIMBING PANTS



DESCRIPTION

MAIN: 62% lyocell 35% cotton 3% spandex

- breathable
- durable

INFO

fit: regular
size: S-XXL

SIZE M:
weight: 336 g
back length: 83 cm

FEATURES

- 2 large side pockets
- adjustable elastic waistband
- inseam gusset for freedom of movement
- low hem with internal drawcord for adjustment
- ergonomic shaped knee
- small secret zipper pocket
- back loop detail

PRODUCT DESCRIPTION

The men's Lamar pants are a brand-new pull-on model that combines lightness, stretch, and durability. The blend of lyocell, cotton, and spandex feels soft on the body, is pleasant to the touch, and dries faster than traditional cotton. The elastic waistband with a drawstring ensures a secure fit and adapts to your movement, while the fly is purely a design detail. Technical knees and an inner gusset provide maximum freedom of movement, and the adjustable leg openings let you fine-tune the fit. There are also two front pockets with top entry and a small zippered pocket for essentials you want to keep secure.



tarmac
10076983RFX

ginger bread
10076985RFX

antique bronze
10076986RFX

sagebrush green
10076984RFX

color: sagebrush green
The model is 185 cm tall and wears size M.



MEN





GNAR LT

MEN'S LIGHTWEIGHT LINEN SHORTS FOR SUMMER CLIMBING



DESCRIPTION

MAIN: 53% linen 45% cotton 2% spandex
SECONDARY: 95% cotton 5% spandex (waistband)

- breathable

INFO

fit: regular
size: S-XXL

SIZE M
weight: 230 g
inseam length: 30 cm

FEATURES

- adjustable elastic waistband
- 2 front hand pockets
- rear pocket
- inseam gusset for freedom of movement
- brush holder

PRODUCT DESCRIPTION

GNAR LT are made from a lightweight combination of linen, cotton, and spandex, this piece is designed to keep you cool during those scorching summer days on the rock or at the crag. We've stripped down the original design to make it even more breathable and functional for your climbs. The waistband now features a full elastic fit for freedom on every move, while we've ditched the fly for a sleek, minimal look. The drawstring is now on the outside for quick and easy adjustments when you're gearing up for your next send.



andesite
10076953RFX

thai curry
10076955RFX

stargazer
10076954RFX

avocado
10076956RFX

color: avocado
The model is 185 cm tall and wears size M.

GRIP LT

MEN'S LIGHTWEIGHT LINEN PANTS FOR SUMMER CLIMBING



DESCRIPTION

MAIN: 53% linen 45% cotton 2% spandex
SECONDARY: 95% cotton 5% spandex (waistband)

- breathable

INFO

fit: regular
size: S-XXL

SIZE M
weight: 340 g
inseam length: 80 cm

FEATURES

- adjustable elastic waistband
- 2 front hand pockets
- rear pocket
- inseam gusset for freedom of movement
- ergonomic shaped knee
- partly elasticized cuffs
- brush holder

PRODUCT DESCRIPTION

Rafiki Grip LT are a perfect climbing trousers for hot summer days. Combination of linen, cotton, and spandex guarantees lightness, comfort, and breathability. The linen material provides a naturally "worn-in" look while also keeping you cool. Thanks to the partially elasticated waistband the trousers fit every male figure without a question. The trousers include five pockets, YKK zippered fly brings extra comfort or pre-shaped knees. In short: whether you're bouldering or sport climbing, the Grips will keep you comfortable and stylish wherever you go. So grip the Grip and head out to seek your next vertical adventure.



andesite
10076964RFX

thai curry
10076966RFX

stargazer
10076965RFX

avocado
10076967RFX

color: andesite
The model is 185 cm tall and wears size M.





CRUX CORD

NEW

MEN'S HYBRID SHORTS



DESCRIPTION

MAIN: 97% cotton 3% spandex
SECONDARY: 97% cotton 3% elastane (part 2)

- breathable
- durable

INFO

fit: regular
size: S-XL

SIZE M:
weight: 317 g
back length: 27 cm

FEATURES

- 2 front hand pockets
- 2 rear pockets
- side pocket
- adjustable elastic waistband
- fabric hybrid design

PRODUCT DESCRIPTION

The popular Crux shorts in a hybrid design. The men's Rafiki Crux Cord shorts are based on the well-known Crux fit, now combining soft corduroy with durable canvas details for a distinctive look. The pull-on design with an elastic waistband and drawstring fits well and adapts to your movement. An inner gusset ensures maximum freedom of movement, and there are practical pockets for everything you need to keep close at hand. Crux Cord simply combine climbing functionality with a more distinctive style – it's up to you where you take them.



tarmac
10076938RFX

aluminum
10076939RFX

orion blue
10076940RFX

aluminum/orion
10076941RFX

LAMAR CORD

NEW

MEN'S CLIMBING HYBRID CORD PANTS



DESCRIPTION

MAIN: 97% cotton 3% spandex
SECONDARY: 97% cotton 3% elastane (part 2)

- breathable
- durable

INFO

fit: regular
size: S-XXL

SIZE M:
weight: 414 g
back length: 83 cm

FEATURES

- 2 large side pockets
- adjustable elastic waistband
- inseam gusset for freedom of movement
- low hem with internal drawcord for adjustment
- ergonomic shaped knee
- small secret zipper pocket
- back loop detail
- fabric hybrid design

PRODUCT DESCRIPTION

The men's Rafiki Lamar Cord pants combine soft corduroy with durable canvas, which we've placed in the most exposed and high-wear areas. The pull-on design with an elastic waistband and drawstring fits well and adapts to your movement, while the fly is purely a design detail. Technical knees and an inner gusset ensure maximum freedom of movement, and there are two front pockets along with a small zippered pocket for essentials. Lamar Cord combine climbing functionality with a more distinctive style – it's up to you where you take them.



tarmac
10076987RFX

aluminum/tarmac
10076989RFX

orion blue
10076988RFX



color: orion blue
The model is 185 cm tall and wears size M.

color: orion blue
The model is 185 cm tall and wears size M.



BETA

ALL YEAR

MEN'S LIGHTWEIGHT CLIMBING DENIM SHORTS FOR ALL DAY COMFORT



DESCRIPTION

MAIN: 64% cotton 29,5% polyester 3,5% rayon 2,5% elastane

- breathable

INFO

fit: regular
size: S-XXL

SIZE M
weight: 255 g
inseam length: 26 cm

FEATURES

- 2 front hand pockets
- rear pocket
- adjustable elastic waistband
- inseam gusset for freedom of movement
- back double loop
- brush holder

PRODUCT DESCRIPTION

Denim shorts with an elastic waistband that will make you feel good on the wall and dazzle everybody at work. No, really, these are shorts of a proven cut that even our best athletes use. We've added functional details like a brush pouch and drawstring waistband and sewed them for you in Rafiki denim. Remember, denim doesn't have to be just pants.



denim
10029652RFX



color: denim
The model is 185 cm tall and wears size M.

CRIMP

ALL YEAR

MEN'S LIGHTWEIGHT CLIMBING DENIM PANTS FOR ALL DAY COMFORT



DESCRIPTION

MAIN: 64% cotton 29,5% polyester 3,5% rayon 2,5% elastane

- breathable

INFO

fit: straight
size: S-XXL

SIZE M
weight: 405 g
inseam length: 87 cm

FEATURES

- 2 front hand pockets
- rear pockets
- adjustable elastic waistband
- inseam gusset for freedom of movement
- doubled knee parts
- waistbelt loops
- brush holder
- fly opening
- cuttable leg length

PRODUCT DESCRIPTION

Don't worry, you're right here in the climbing clothes. It doesn't look like, does it? The lightweight denim material makes them breathable and quick drying. The inset gusset and double-moulded knees promise unrestricted movement. Our ambassador Vojta Trojan sent in Crimp legendary Action Directe 9a. The elastic at the waist is hidden inside so as not to spoil the civil look, and we've also added belt loops. A smart pocket for a brush is a must. We've prepared two seamed lines on the bottom cuff of the trousers, where you can cut and therefore shorten the trousers without fear of the fabric fraying.



denim
10019997RFX



color: denim
The model is 185 cm tall and wears size M.



TORRE II

ALL YEAR

MEN'S CLIMBING DENIM PANTS



DESCRIPTION

MAIN: 52% rayon 28% cotton 19% polyester
1% spandex

- comfortable
- durable

INFO

fit: straight
size: S-XXL

SIZE M:
weight: 513 g
inseam length: 83 cm

FEATURES

- adjustable elastic waistband
- 2 front hand pockets
- rear pocket
- Inseam gusset for freedom of movement
- ergonomic shaped knee
- brush pocket
- bottom leg with internal drawcord for adjustment

PRODUCT DESCRIPTION

In Torre II men's climbing jeans you will handle any challenge. Whether it's bouldering at the edge your skill, balancing on a miniature crimp, or needing to put your knee under your chin, the Torre II won't let you down. The higher weight makes them the perfect choice for the chilly climbing condition. Rafiki elastic waist ensures a perfect fit, so you will feel nothing under the harness and nothing will distract you from the next step under the quickdraw.



CARRY OVER

dark blue denim
10056560RFX

ROCCA

ALL YEAR

MEN'S DENIM PANTS FOR CLIMBING AND EVERYDAY COMFORT



DESCRIPTION

MAIN: 59% cotton 38% coolmax
3% elastane

- breathable

INFO

fit: straight
size: S-XXL

SIZE M:
weight: 498 g
inseam length: 83 cm

FEATURES

- partly elastic waistband
- 2 front hand pockets
- 2 rear pockets
- thigh pocket
- fly opening
- Inseam gusset for freedom of movement
- ergonomic shaped knee
- waistbelt loops
- brush pocket

PRODUCT DESCRIPTION

Versatile men's climbing jeans Rocca. Besides front and back pockets, you'll find a zippered thigh pocket compatible with a harness. The durable canvas also protects more than just your knees when you're projecting new route. You can use the Rocca for all your climbing activities, but when you decide to go to straight for the diner just after packing your rack you won't have to feel guilty you look like a climbing bum. You can easily chalk off your pants, slip your toothbrush into the pouch and blend in with the crowd.



CARRY OVER

dark blue denim
10056543RFX



color: dark blue denim
The model is 185 cm tall and wears size M.

color: dark blue denim
The model is 185 cm tall and wears size M.



RAFIKI KIDS



KAILAS JR

ALL YEAR

UNIVERSAL KID'S COMFORTABLE ORGANIC SHORT SLEEVE TEE



DESCRIPTION	INFO	FEATURES
-------------	------	----------

MAIN: 100% organic cotton
 • breathable
 • soft

fit: regular
 size: 128, 134, 140, 146, 152

• eco fabric

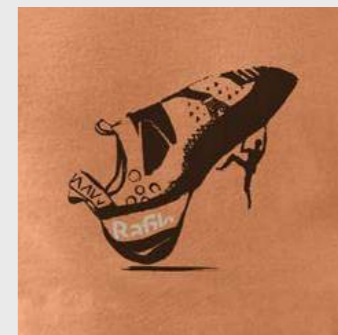
SIZE 152:
 weight: 95 g
 back length: 56 cm

PRODUCT DESCRIPTION

To fulfill their potential, boys and girls of the new climbing generation need a quality T-shirt with Rafiki Guy. This children's T-shirt is made of 100% bio cotton which is incredibly pleasant and light. A big print on the front will encourage your kids the next time you take them climbing.



puritan gray 10076980RFX	rosette 10076982RFX	caramel 10076981RFX	raven 10076979RFX
-----------------------------	------------------------	------------------------	----------------------



color: caramel



RUMNEY JR

ALL YEAR

UNIVERSAL KID'S COTTON SHORTS FOR CLIMBING AND ACTIVE MOVEMENT



DESCRIPTION

MAIN: 97% cotton 3% elastane

- breathable
- durable

INFO

fit: regular
size: 128, 134, 140, 146, 152

SIZE 152:
weight: 130 g
inseam length: 22 cm

FEATURES

- elastic waistband
- 2 front pockets
- rear pocket

PRODUCT DESCRIPTION

Universal shorts for every little (mountain) climber and adventurer. Cut and size will fit both boys and girls. They are made of a pleasant cotton material that is also incredibly durable. So kids can run around in them on the rocks, roll in the sand below the sandstone tower, or climb the pine trees in the nearby forest and you don't have to worry that they'll bring new holes in their shorts. Then we've added a wide elastic waistband for added comfort. We know kids love to wear colors, so we've come up with a variety of colorful designs that boys and girls are sure to choose from.



chili oil/graphite
10063809RFX

hydro/graphite
10077056RFX

olive oil/graphite
10077057RFX

blue graphite/chili
10077055RFX

color: chili oil/graphite

PEDRO JR

ALL YEAR

UNIVERSAL KID'S COTTON PANTS FOR CLIMBING AND ACTIVE MOVEMENT



DESCRIPTION

MAIN: 97% cotton 3% elastane

- breathable
- durable

INFO

fit: regular
size: 128, 134, 140, 146, 152

SIZE 152:
weight: 190 g
inseam length: 71 cm

FEATURES

- elastic waistband
- ergonomic shaped knees
- 2 front pockets
- rear pocket

PRODUCT DESCRIPTION

Universal pants for every little (mountain) climber and adventurer. Cut and size will fit both boys and girls. They are made of a pleasant cotton material that is also incredibly durable. So kids can run around in them on the rocks, roll in the sand below the sandstone tower, or climb the pine trees in the nearby forest and you don't have to worry that they'll bring new holes in their pants. Then we've added a wide elastic waistband for added comfort. We know kids love to wear colors, so we've come up with a variety of colorful designs that boys and girls are sure to choose from.



chili oil/graphite
10063803RFX

hydro/graphite
10077050RFX

olive oil/graphite
10052675RFX

blue graphite/chili
10077049RFX

color: hydro/graphite





RAFIKI ACCESSORIES



GRADE

ALL YEAR

TWO-PIECE STURDY CRASH PAD

DESCRIPTION

MAIN: 100% polyester 6000
 SECONDARY: 100% polyester 600 D/PVC
 (bottom part)
 FILLING: hard PE foam 30 mm
 + PU foam 70 mm

- durable
- water-resistant

INFO

size: O/S (one size)
 open: 140x100x10 cm
 weight: 6000 g

FEATURES

- massive coil zipper
- detachable padded shoulder straps
- detachable waist belt
- webbing loops for carrying
- 2 locking straps
- metal hook closure
- secret pocket with small carpet
- locking Velcros

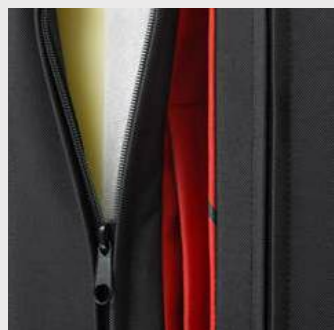
PRODUCT DESCRIPTION

Looking for a reliable and rugged crash pad that will protect you from hard falls? If so, look no further, our classic two-piece GRADE crash pad is a must-have for every bouldering enthusiast. Two layers of high-quality foam will take care of cushioning your falls. To be sure that we chose the right hardness of the foam we thoroughly tested it in cooperation with our ambassadors and bouldering hall builders.

The crash pad cover is made of durable materials and can withstand even the roughest treatment. The rubber-coated material on the outside is also non-slip and easy to wash if dirty. Comfortable (one-piece) shoulder straps and a simple hip strap allow you to easily carry the crash pad to all your unfinished projects. You can detach both of these straps if needed. There are durable metal buckles and handles for handling on the ground or carrying. A mat for cleaning the climbing shoes can be found in a separate hidden pocket on the top. You can trust the quality - the crash pad is made and filled in Europe and we have paid attention to every little detail. Don't settle for less - upgrade your gear with this Rafiki crash pad.



salsa II
 10047829RFX



color: salsa II
 The model is 185 cm tall.





GRIT 40

ALL YEAR

RUGGED CLIMBING BACKPACK FOR ALL CLIMBERS

DESCRIPTION	INFO	FEATURES
<p>MAIN: 100% polyester 600D TPU coating SECONDARY: 100% polyester 210D coated (tarp)</p> <ul style="list-style-type: none"> weather-proof durable YKK zippers 	<p>fit: UNI size: O/S (one size), 58x29x24 cm weight: 1200 g capacity: 40 l</p>	<ul style="list-style-type: none"> central full-length zipper 2 large side pockets padded shoulder straps padded comfortable hip belt metal hook closure integrated gear loops webbing loops for carrying chest strap retractable straps for rope attaching clip-stick straps climbing grades chart inside

PRODUCT DESCRIPTION

The GRIT climbing backpack with a capacity of 40 litres is ideal for carrying your climbing gear. Its sturdy construction, durable metal buckles and TPU finish give it durability. A full-length YKK zipper down the middle of the back then allows for quick and easy access to everything you stow in it. With this pack, there's no more chaotic rummaging and situations where „the thing“ you need is, as bad luck dictates, at the bottom of the pack are a thing of the past. Thanks to the padded and reinforced shoulder straps, chest strap and reinforced hip strap, you can be sure that even when you stuff the pack, it will carry comfortably. Plus, you'll find a handy little pocket on the waist strap, for example for your keys, and a loop for clipping on your climbing shoes. With two side pockets, carabiner loops, drawstring straps for attaching a rope, or elastic side straps for a clip stick, the GRIT is really practical. Two large loops at the top and bottom of the pack allow you to move the open pack under the rock without having to close the pack first. Every climber knows that if you want to taste climbing on hard "grit stone", you will have to visit famous Peak District in Great Britain...well, it's only a matter of time before our GRIT backpack becomes just as famous.



color: blue nights
The model is 185 cm tall.



blue nights
10041473RFX

GRIT 28

ALL YEAR

SMALL RUGGED CLIMBING BACKPACK FOR ALL CLIMBERS

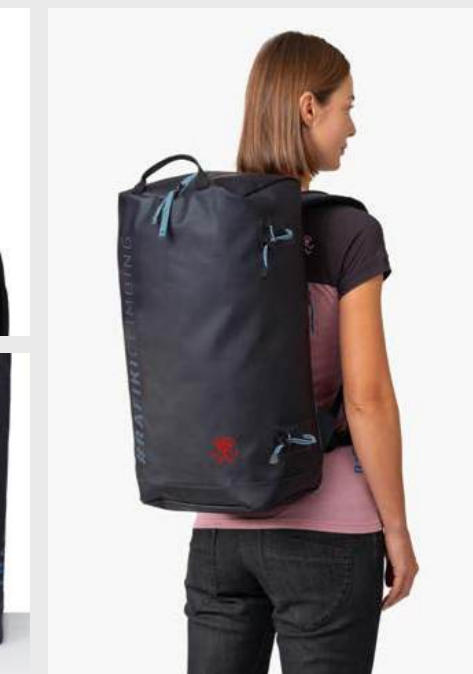
DESCRIPTION	INFO	FEATURES
<p>MAIN: 100% polyester 600D TPU coating SECONDARY: 100% polyester 210D coated (tarp)</p> <ul style="list-style-type: none"> weather-proof durable YKK zippers 	<p>fit: UNI size: O/S (one size), 58x28x20 cm weight: 890 g capacity: 28 l</p>	<ul style="list-style-type: none"> central full-length zipper 2 large side pockets padded shoulder straps simple detachable hip belt metal hook closure integrated gear loops webbing loops for carrying chest strap retractable straps for rope attaching clip-stick straps climbing grades chart inside

PRODUCT DESCRIPTION

The GRIT climbing backpack with a capacity of 28 litres is ideal for carrying your climbing gear. With a weight of only 890g, it's perfect for shorter climbing missions or for girl climbers who don't want to put too much on their backs. Its sturdy construction, durable metal buckles and TPU finish give it durability. A full-length YKK zipper down the middle of the back then allows for quick and easy access to everything you stow in it. With this pack, there's no more chaotic rummaging and situations where „the thing“ you need is, as bad luck dictates, at the bottom of the pack are a thing of the past. With padded and reinforced shoulder straps, a sternum strap, and a simple detachable hip strap, you can be sure that even when you stuff the pack, it will carry comfortably. With two side pockets, carabiner loops, drawstring straps for attaching a rope, or elastic side straps for a clip stick, the GRIT is really practical. Two large loops at the top and bottom of the pack allow you to move the open pack under the rock without having to close the pack first. Every climber knows that if you want to taste climbing on hard "grit stone", you will have to visit famous Peak District in Great Britain...well, it's only a matter of time before our GRIT backpack becomes just as famous.



blue nights
10041474RFX



color: blue nights
The model is 175 cm tall.



HAULER 50

ALL YEAR

ULTIMATE DUFFEL BAG WITH FULL-FEATURE SET FOR QUICK ADVENTURES

DESCRIPTION	INFO	FEATURES
<p>MAIN: 100% polyester 420 D two tone ripstop (two side coated)</p> <ul style="list-style-type: none"> weather-proof packable 	<p>fit: UNI size: O/S (one size), 55x33x25 cm weight: 650 g capacity: 50 l</p>	<ul style="list-style-type: none"> durable fabric wide zipper lid opening with mesh pocket removable shoulder straps with metal buckles side zip pocket front hand pocket with waterproof zipper 4 sturdy handles packable into its own pocket

PRODUCT DESCRIPTION

Multi-purpose durable transport bag that you can carry in your hand thanks to the sturdy handles or on your back thanks to the reinforced straps. The straps are also removable with duralumin buckles or you can hide them in the pocket on the lid of the main compartment. The Rafiki duffel offers 3 more pockets with YKK zipper. On the side with a water-repellent zipper, a mesh one all along the inside of the lid, or on the front pocket where you can simply roll the bag into a small pancake and use it as a pad for sitting on the cold ground, for example. Climbers will also love the daisy chain sewn around the side of the bag.



anthracite
10031669RFX

ROPER

ALL YEAR

PRACTICAL ROPE BAG WITH INTEGRATED ROPE TARP

DESCRIPTION	INFO	FEATURES
<p>MAIN: 100% polyester 600D SECONDARY: 100% polyester 210D coated (tarp)</p>	<p>fit: UNI size: O/S (one size) weight: 590 g capacity: 25 l tarp size: 135x125 cm</p>	<ul style="list-style-type: none"> 2 compression straps adjustable shoulder strap integrated rope tarp with colour loops hold ropes up to 80 m

PRODUCT DESCRIPTION

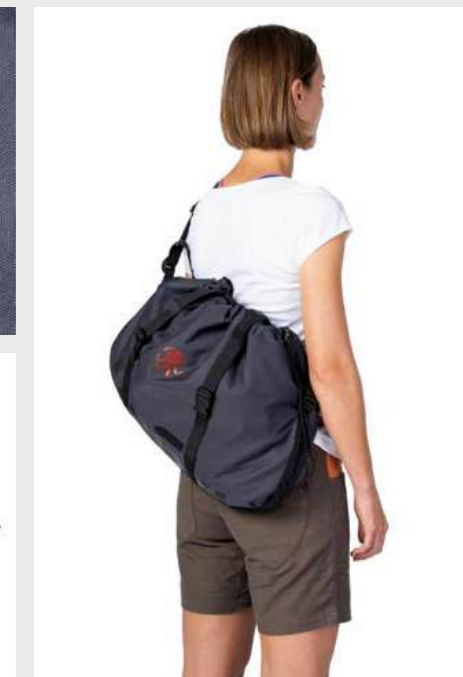
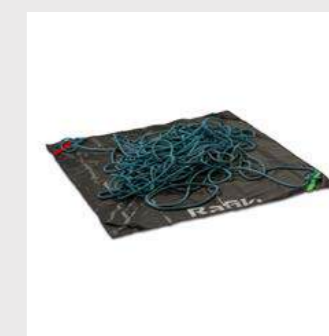
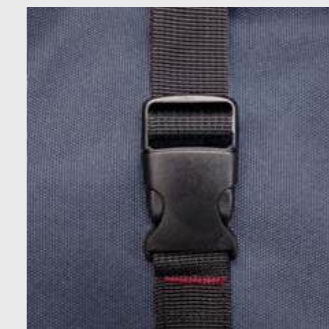
You don't want your rope rolling in wet sand, dirty mud, or even rain and water under a rock anymore? We know you don't! That's why we have prepared our new Rafiki ROPER for you. A practical and durable rope bag that protects the rope inside from the elements. Inside the rope bag, you will find a PU-coated tarpaulin that will protect your rope from getting wet and dirty from the ground. Of course, there are also colored loops for tying the ends of the rope, so you won't have to dig through its whole length just to find the right end to tie on. The ROPER rope bag also features two compression straps and one adjustable shoulder strap. With a 25-litre capacity, it can comfortably hold up to 80 metres of rope and you can throw in climbing shoes, a chalk bag, or other essentials.



charcoal gray
10066096RFX



color: anthracite
The model is 185 cm tall.



color: charcoal gray
The model is 175 cm tall.



SCRUB 26

ALL YEAR

TOP LOADING BACKPACK DESIGNED FOR EVERYDAY USE

DESCRIPTION

MAIN: 100% polyester 900 D coated
SECONDARY: 100% polyester 4000 coated (skirt closure)

- durable

INFO

fit: UNI
size: O/S (one size),
49x28x22 cm
weight: 650 g
capacity: 26 l

FEATURES

- top loading design
- drawcord skirt closure
- full-length side zipper
- internal zip pocket

PRODUCT DESCRIPTION

Our new Rafiki SCRUB backpack with a capacity of 26 liters will serve you well for everyday use. Its design was inspired by „big-wall“ haulers aka „hogs“, featuring a large opening on the top, a full-height vertical daisy chain strap, reinforced hems and edges, and a flat, sturdy bottom for better stability when you put it on the ground. A large side zippered opening gives you easy access to all the stuff in the bottom of the pack too. An internal back pocket protects your laptop or tablet, while a small zippered side pocket is perfect for storing your phone or wallet. Whether you're commuting to work, running errands, or heading to the climbing wall, the SCRUB backpack will be your ideal partner. There are two color designs to choose from, so just pick the one that suits your climbing and adventurous nature.



color: crest
The model is 162 cm tall.



dark navy
10041475RFX



crest
10041478RFX





GUIDE BOOK COVER

ALL YEAR

GUIDE BOOK PROTECTIVE COVER

DESCRIPTION	INFO	FEATURES
<p>MAIN: 100% polyester 900D coated SECONDARY: 100% polyester 210D coated (lining)</p>	<p>fit: UNI size: O/S (one size), 26x18x4 cm weight: 210 g</p>	<ul style="list-style-type: none"> • durable fabric • strong attachment loop • integrated pen holder • climbing grades chart inside

PRODUCT DESCRIPTION

Introducing a practical climbing guidebook cover that will fit and protect even the thickest guidebooks. This cover features a handy loop that can be used to clip it or hang it anywhere. Inside you will find an elastic loop for a pen or pencil. The design is simple, yet effective in protecting your guidebook from the elements and wear and tear. Now you can take your guidebook with you on all your climbing adventures without having to worry about it getting destroyed.



color: anthracite



anthracite
10041477RFX

CAMP

ALL YEAR

STYLISH LOGO SNAPBACK

DESCRIPTION	INFO	FEATURES
<p>MAIN: 100% cotton SECONDARY: 100% polyester (inner headband)</p>	<p>fit: UNI size: O/S (one size) weight: 98 g</p>	<ul style="list-style-type: none"> • adjustable size

PRODUCT DESCRIPTION

No matter what they say, flat brims are cool. Get the Camp cap and set off for climbing or city walks. Don't give up on your style wherever you go.



anthracite 10024458RFX
 hot chocolate/anthracite 10063690RFX
 golden olive 10024457RFX
 kelp/anthracite 10063691RFX



color: golden olive
The model is 185 cm tall and wears UNI size.



MARAY

ALL YEAR

TRENDY 5-PANNEL CAP

DESCRIPTION	INFO	FEATURES
<p>MAIN: 100% cotton SECONDARY: 100% polyester (inner headband)</p>	<p>fit: UNI size: O/S (one size) weight: 86 g</p>	<ul style="list-style-type: none"> adjustable size

PRODUCT DESCRIPTION

This lower-profile 5-panel cap is perfect for climbers who prefer a loose, comfortable fit—whether you're heading out for a boulder session or just chilling in the city. It gives you the sun protection you need without getting in your way while climbing—unless, you're stuck in the chimney. Available in four different color combinations, it complements our classic Camp cap and is ready for everything — approaching the crag, projecting, or relaxing by the fire. Minimalist design, maximum comfort. Nothing more needed.



color: shaded spruce/anthracite
The model is 185 cm tall and wears UNI size.



anthracite
10063696RFX

shaded spruce/anthracite
10063695RFX

kelp/chocolate
10063694RFX

MARAY PRINT

ALL YEAR

TRENDY 5-PANNEL PRINTED CAP

DESCRIPTION	INFO	FEATURES
<p>MAIN: 100% cotton + 65% cotton 35% Polyester (printed parts) SECONDARY: 100% polyester (inner headband)</p>	<p>fit: UNI size: O/S (one size) weight: 86 g</p>	<ul style="list-style-type: none"> adjustable size prints variation

PRODUCT DESCRIPTION

This lower-profile 5-panel cap, featuring prints on the sides, is perfect for climbers who prefer a loose, comfortable fit—whether you're heading out for a boulder session or just chilling in the city. Available in 2 different color combinations, it complements our classic Camp gear and is ready for anything — approaching the crag, working your project, or relaxing by the fire.



anthracite
10063693RFX

hot chocolate/stargazer
10063692RFX



color: anthracite
The model is 185 cm tall and wears UNI size.





ROCKY

ALL YEAR

ALL-PURPOS LOGO BEANIE

DESCRIPTION	INFO	FEATURES
MAIN: 50% acrylic 50% recycled polyester	fit: UNI size: O/S (one size) weight: 65 g	• distinct Rafiki logo

PRODUCT DESCRIPTION

Calm your head and thoughts could much harder than crimping, which is why we bring you a warm new beanie Rocky. This simple knitted beanie with Rafiki logo will keep your head warm, so you can just focus on every single move in your cool project.



color: stargazer
The model is 185 cm tall and wears UNI size.



raven 10056548RFX
dried tobacco 10056552RFX
stargazer 10056550RFX
autumn glaze 10056551RFX
pale blush 10056549RFX

CAMPO

ALL YEAR

EVERYDAY BEANIE

DESCRIPTION	INFO	FEATURES
MAIN: 42% acrylic 28% polyamide 30% elastane • warm • breathable	fit: UNI size: O/S (one size) weight: 97 g	• embroidered patch

PRODUCT DESCRIPTION

The Campo beanie will definitely keep your head warm. Perfect for working on tough boulders or for everyday wear.



raven 10070512RFX
burnt olive 10070515RFX
plum wine 10070513RFX
blue shadow 10070514RFX



color: raven
The model is 185 cm tall and wears UNI size.



SCOOP

ALL YEAR

CHALK BAG

DESCRIPTION

MAIN: 97% cotton 3% elastane
SECONDARY: 100% polyester (lining)

INFO

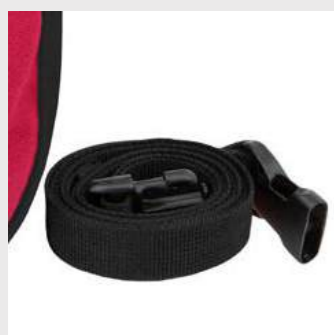
fit: UNI
size: O/S (one size)
weight: 100 g

FEATURES

- drawcord skirt closure
- 2 loops for belt fastening (belt included)
- brush holder
- microfleece lined interior

PRODUCT DESCRIPTION

Practical chalk bag in classic shape with drawstring fastening and distinctive Rafiki design. The bag also includes a belt with a buckle and you can choose from a wide range of colour combinations. The design is completed with the motivational slogan „Less talk, more chalk“. Of course, there is also a brush loop for cleaning your holds. So put on your climbing harness, put on your climbing shoes, buckle up your Rafiki chalk bag, and head for the next vertical adventure!



color: persian red



persian red
10001938RFX

dark navy
10029645RFX

poison tile
10053348RFX

pool orchid
10053350RFX

grenadine rock
10053351RFX

BISHOP

ALL YEAR

ALL IN ONE BOULDERING CHALK BAG

DESCRIPTION

MAIN: 100% cotton
SECONDARY: 100% polyester (lining)

INFO

size: O/S (one size)
weight: 175 g

FEATURES

- stable design
- Velcro roll-up closure with metal buckle
- side zip pocket
- brush holders
- microfleece lined interior

PRODUCT DESCRIPTION

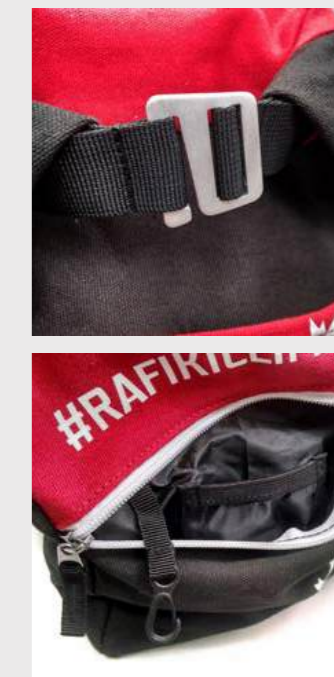
Introducing Bishop! This is not a scruffy climbing chalk bag, but a proper „boulder bag“ with a roll-up velcro closure complete with a metal buckle! Bishop will serve you long and well, even if you don't treat it like a fragile treasure. We've used a pleasant „micro-fleece“ for the inside of the bag and on the side, you'll find a handy zippered pocket, which you can also use as a key holder or to stash all your valuables and bouldering essentials like tape, sandpaper, scissors or band-aids if worst comes to worst! You can then tuck up to three different-sized toothbrushes into the outer pockets. So take the Rafiki Bishop to Bishop, California, or just anywhere else for some serious bouldering!



dark navy
10004689RFX

pool orchid
10053352RFX

poison tile
10053353RFX



color: dark navy



CHALK

ALL YEAR

MAGNESIUM

DESCRIPTION

MAIN: 100% chalk

INFO

„less talk more chalk..“

FEATURES

- eco cosmetics products
- no chemicals
- 100% healthy

PRODUCT DESCRIPTION

Get a grip with our high-quality magnesium products for climbing! Our magnesium is perfect for drying your skin and improving your grip during your climb. It's suitable for use on climbing walls, rocks, and even for gymnastics and fitness activities. We pride ourselves on offering the highest quality products, tested by the state health institute, and all made in the EU. Our range of products includes crushed magnesium, liquid magnesium, and magnesium balls, so you can choose the format that best suits your needs. Crushed magnesium is perfect for refilling your chalk bag or bucket, while liquid magnesium is ideal for quick and easy application. The magnesium balls are a convenient option for those who want to avoid the mess of powdered magnesium.



MG Ball 40 g
117RF0001AX



MG Dose 100 g
117RF0003AX



MG Sack 250 g
117RF0004AX



MG Liquid 100 ml
10005126RFX



MG Liquid 200 ml
117RF0002AX



RAFIKI SHOES



SWITCHBACK TRAVERSE

ALL YEAR

MEN'S MIXED TERRAIN LOW-CUT OUTDOOR SHOE

DESCRIPTION	INFO	FEATURES
<p>UPPER: 100% nylon ripstop, suede leather (1.4mm), TPU</p> <p>MIDSOLE: comfortable molded EVA</p> <p>OUTSOLE: sticky rubber</p> <p>FOOTBED: dual density</p> <ul style="list-style-type: none"> • lightweight • durable • DWR 	<p>fit: wide</p> <p>size: 41-47</p> <p>extended size range: 40,5/42,5/43,5/45,5/47,5</p> <p>SIZE 42:</p> <p>weight: 350 g (one shoe)</p> <p>insole length (MP): 28 cm</p> <p>drop: 8 mm</p>	<ul style="list-style-type: none"> • roomy toe box • close to toe lacing • paracord lace loops • suede mud guard • durable ripstop upper • webbing pull tabs • climbing zone • asymmetrical toe protection • shock-absorbing cushioned midsole • 4mm multidirectional aggressive lugs • maximum stability and reliable traction control

PRODUCT DESCRIPTION

Low-profile outdoor shoes designed for climbers who want reliable movement in any terrain, all year round. The EVA midsole cushions every step, so even a full day spent standing under the crag feels comfortable. The rubber outsole, inspired by trail running shoes, grips even when things start to get slippery, while the climbing zone in the toe helps in more technical sections. Durable suede on the toe protects the areas that take the most abuse, while ripstop fabric on the sides keeps the shoe lightweight yet tough. Thanks to the toe protection, you can ease the frustration when you don't send your project. The wider fit gives your toes space to relax after taking off teeny tiny climbing shoes. Extended lacing all the way to the toe allows for precise adjustment depending on your needs or the terrain. The breathable inner construction secures the tongue and enhances overall comfort. Whether you're heading to the crag or dealing with a project at the office, Switchbacks deliver confidence, stability, and functional performance.



india ink
10076167RFX

olivenite
10076168RFX

black
10076297RFX

SWITCHBACK TRAVERSE W

ALL YEAR

WOMEN'S MIXED TERRAIN LOW-CUT OUTDOOR SHOE

DESCRIPTION	INFO	FEATURES
<p>UPPER: 100% nylon ripstop, suede leather (1.4mm), TPU</p> <p>MIDSOLE: comfortable molded EVA</p> <p>OUTSOLE: sticky rubber</p> <p>FOOTBED: dual density</p> <ul style="list-style-type: none"> • lightweight • durable • DWR 	<p>fit: wide</p> <p>size: 37-42</p> <p>extended size range: 37,5/38,5/40,5/42,5</p> <p>SIZE 42:</p> <p>weight: 350 g (one shoe)</p> <p>insole length (MP): 28 cm</p> <p>drop: 8 mm</p>	<ul style="list-style-type: none"> • roomy toe box • close to toe lacing • paracord lace loops • suede mud guard • durable ripstop upper • webbing pull tabs • climbing zone • asymmetrical toe protection • shock-absorbing cushioned midsole • 4mm multidirectional aggressive lugs • maximum stability and reliable traction control

PRODUCT DESCRIPTION

Low-profile outdoor shoes designed for climbers who want reliable movement in any terrain, all year round. The EVA midsole cushions every step, so even a full day spent standing under the crag feels comfortable. The rubber outsole, inspired by trail running shoes, grips even when things start to get slippery, while the climbing zone in the toe helps in more technical sections. Durable suede on the toe protects the areas that take the most abuse, while ripstop fabric on the sides keeps the shoe lightweight yet tough. Thanks to the toe protection, you can ease the frustration when you don't send your project. The wider fit gives your toes space to relax after taking off teeny tiny climbing shoes. Extended lacing all the way to the toe allows for precise adjustment depending on your needs or the terrain. The breathable inner construction secures the tongue and enhances overall comfort. Whether you're heading to the crag or dealing with a project at the office, Switchbacks deliver confidence, stability, and functional performance.



spellbound
10076165RFX

black
10076296RFX





SWITCHBACK TRAIL

ALL YEAR

MEN'S LIGHTWEIGHT TRAIL SNEAKERS

DESCRIPTION

UPPER: 80% high elasticity polyester 10% nylon 10% Spandex, 100% nylon ripstop, synthetic leather, TPU
 MIDSOLE: comfortable molded EVA
 OUTSOLE: sticky rubber
 FOOTBED: dual density

- lightweight
- durable
- breathable

INFO

fit: wide
 size: 41-47
 extended size range:
 40,5/42,5/43,5/45,5/47,5

SIZE 42:

weight: 350 g (one shoe)
 insole length (MP): 28 cm
 drop: 8 mm

FEATURES

- roomy toe box
- quick lacing system
- paracord lace loops
- TPU mud guard
- durable ripstop upper
- climbing zone
- asymmetrical toe protection
- shock-absorbing cushioned midsole
- 4mm multidirectional aggressive lugs
- maximum stability and reliable traction control

PRODUCT DESCRIPTION

Low-profile trail shoes designed for fast and confident movement in any terrain. The EVA midsole softens every step, so even during a long search for the perfect line, you won't be able to blame tired feet for not sending your project. The rubber outsole with grip inspired by trail running shoes holds even where it starts to get slippery, and thanks to the climbing zone in the toe, you'll feel secure in more technical terrain. There's also toe protection to save your toes from painful knocks. The lightweight upper combines ripstop fabric, a TPU layer, and an elastic knit construction, making the shoe both durable and breathable. The integrated collar keeps dirt out, so you won't bring any souvenirs home. The wider toe box gives you space after taking off climbing shoes. The quick-lacing system allows precise adjustment based on your needs or terrain. A dual-density insole helps keep your heel stable. Whether you're facing a demanding approach or a full day of belaying, these shoes are exactly what you need!



seagrass
10077075RFX



india ink
10077074RFX



black
10077073RFX

SWITCHBACK TRAIL W

ALL YEAR

WOMEN'S LIGHTWEIGHT TRAIL SNEAKERS

DESCRIPTION

UPPER: 80% high elasticity polyester 10% nylon 10% Spandex, 100% nylon ripstop, synthetic leather, TPU
 MIDSOLE: comfortable molded EVA
 OUTSOLE: sticky rubber
 FOOTBED: dual density

- lightweight
- durable
- breathable

INFO

fit: wide
 size: 37-42
 extended size range:
 37,5/38,5/40,5/42,5

SIZE 42:

weight: 350 g (one shoe)
 insole length (MP): 28 cm
 drop: 8 mm

FEATURES

- roomy toe box
- quick lacing system
- paracord lace loops
- TPU mud guard
- durable ripstop upper
- climbing zone
- asymmetrical toe protection
- shock-absorbing cushioned midsole
- 4mm multidirectional aggressive lugs
- maximum stability and reliable traction control

PRODUCT DESCRIPTION

Low-profile trail shoes designed for fast and confident movement in any terrain. The EVA midsole softens every step, so even during a long search for the perfect line, you won't be able to blame tired feet for not sending your project. The rubber outsole with grip inspired by trail running shoes holds even where it starts to get slippery, and thanks to the climbing zone in the toe, you'll feel secure in more technical terrain. There's also toe protection to save your toes from painful knocks. The lightweight upper combines ripstop fabric, a TPU layer, and an elastic knit construction, making the shoe both durable and breathable. The integrated collar keeps dirt out, so you won't bring any souvenirs home. The wider toe box gives you space after taking off climbing shoes. The quick-lacing system allows precise adjustment based on your needs or terrain. A dual-density insole helps keep your heel stable. Whether you're facing a demanding approach or a full day of belaying, these shoes are exactly what you need!



desert sage
10077078RFX



frosty green
10077077RFX



black
10077076RFX





SWITCHBACK SLIP-ON

ALL YEAR

MEN'S AFTER CLIMBING RECOVERY SLIP-ON SHOE

DESCRIPTION

UPPER: 80% high elasticity polyester 10% nylon 10% Spandex, TPU
MIDSOLE: comfortable molded EVA
OUTSOLE: sticky rubber
FOOTBED: dual density

- lightweight
- breathable
- easy to wear on and off

INFO

fit: wide
size: 41-47
extended size range:
40,5/42,5/43,5/45,5/47,5

SIZE 42:
weight: 350 g (one shoe)
insole length (MP): 28 cm
drop: 8 mm

FEATURES

- roomy toe box
- slip-on construction
- breathable stretchy knit sock
- TPU mud guard
- climbing zone
- collapsible heel
- webbing loop for clipping options
- asymmetrical toe protection
- shock-absorbing cushioned midsole
- 4mm multidirectional aggressive lugs
- maximum stability and reliable traction control

PRODUCT DESCRIPTION

Had a full day in climbing shoes and feel like cutting off your sore toes? Switchback Slip-ons are designed for recovery after a long day on the wall as well as for everyday activities. The EVA midsole provides a soft, cushioned step, while the rubber outsole with trail-inspired grip ensures optimal traction and stability. Like the other models in the Switchback range, the slip-on version features a climbing zone in the toe, so even more demanding terrain won't catch you off guard. The wider toe box is exactly what you want in a recovery shoe for your rest day. Thanks to the elastic knit sock construction, the shoes are highly breathable and also allow you to step on the heel—whatever comes your way, just slip them on and go. A practical detail worth mentioning is the heel loop, which lets you clip the shoes to your harness or backpack.



black
10077069RFX

mulled basil
10077070RFX

SWITCHBACK SLIP-ON W

ALL YEAR

WOMEN'S AFTER CLIMBING RECOVERY SLIP-ON SHOE

DESCRIPTION

UPPER: 80% high elasticity polyester 10% nylon 10% Spandex, TPU
MIDSOLE: comfortable molded EVA
OUTSOLE: sticky rubber
FOOTBED: dual density

- lightweight
- breathable
- easy to wear on and off

INFO

fit: wide
size: 37-42
extended size range:
37,5/38,5/40,5/42,5

SIZE 42:
weight: 350 g (one shoe)
insole length (MP): 28 cm
drop: 8 mm

FEATURES

- roomy toe box
- slip-on construction
- breathable stretchy knit sock
- TPU mud guard
- climbing zone
- collapsible heel
- webbing loop for clipping options
- asymmetrical toe protection
- shock-absorbing cushioned midsole
- 4mm multidirectional aggressive lugs
- maximum stability and reliable traction control

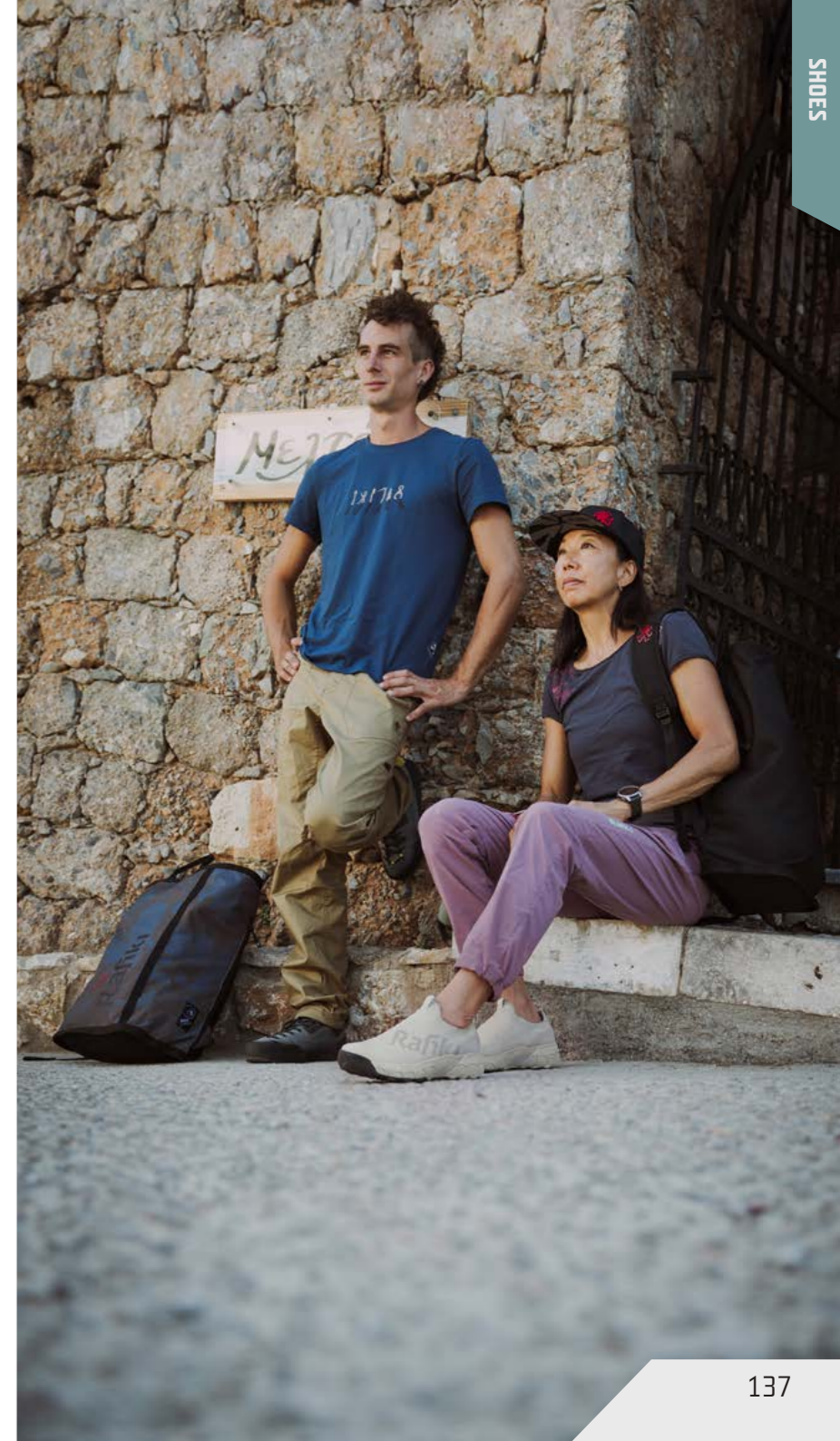
PRODUCT DESCRIPTION

Had a full day in climbing shoes and feel like cutting off your sore toes? Switchback Slip-ons are designed for recovery after a long day on the wall as well as for everyday activities. The EVA midsole provides a soft, cushioned step, while the rubber outsole with trail-inspired grip ensures optimal traction and stability. Like the other models in the Switchback range, the slip-on version features a climbing zone in the toe, so even more demanding terrain won't catch you off guard. The wider toe box is exactly what you want in a recovery shoe for your rest day. Thanks to the elastic knit sock construction, the shoes are highly breathable and also allow you to step on the heel—whatever comes your way, just slip them on and go. A practical detail worth mentioning is the heel loop, which lets you clip the shoes to your harness or backpack.



black
10077071RFX

moonstruck
10077072RFX





ASSOS

ALL YEAR

CLIMBER SPIRIT OUTDOOR SNEAKERS

DESCRIPTION

UPPER: 50% suede leather, 50% polyester
MIDSOLE: comfortable molded EVA
OUTSOLE: sticky rubber

- durable
- breathable
- weather resistant

INFO

fit: regular
size: 42-47

SIZE 42:
weight: 370 g (one shoe)
insole length (MP): 28 cm
drop: 8 mm

FEATURES

- durable leather upper
- custom designed RFK outsole for better traction
- lug height 3 mm
- rubber toe protection
- extended close to toe lacing
- heel protection for higher durability
- sticky rubber outsole
- climbing zone for better grip
- paracord lace loops
- webbing loop for clipping options
- contoured EVA insole

PRODUCT DESCRIPTION

An outdoor shoe that keeps a casual look but is built for more than just asphalt. The newly developed Rafiki outsole is inspired by climbing holds and, combined with sticky rubber, provides confident footing on rock, dirt, or in the city. With a 3 mm tread, it can handle even slightly broken terrain. The durable leather upper can take a beating—unlike the skin on your hands—and as a bonus, it holds its shape even with frequent use. Toe and heel protection extend the shoe's lifespan, while extended lacing all the way to the toe lets you fine-tune the fit—looser for approaches, tighter for more technical sections. A climbing zone in the toe ensures more precise foot placement and better support on smaller footholds, especially useful during approaches or light scrambling. An 8 mm drop keeps your foot in a comfortable position even during long wear, making the shoe work just as well for city walks as for quick escapes to the crag.



dark shadow/cress
10072862RFX



golden green/saxony
10072863RFX

ASSOS W

ALL YEAR

CLIMBER SPIRIT OUTDOOR SNEAKERS

DESCRIPTION

UPPER: 50% suede leather, 50% polyester
MIDSOLE: comfortable molded EVA
OUTSOLE: sticky rubber

- durable
- breathable
- weather resistant

INFO

fit: regular
size: 37-42

SIZE 42:
weight: 370 g (one shoe)
insole length (MP): 27,3 cm
drop: 8 mm

FEATURES

- durable leather upper
- custom designed RFK outsole for better traction
- lug height 3 mm
- rubber toe protection
- extended close to toe lacing
- heel protection for higher durability
- sticky rubber outsole
- climbing zone for better grip
- paracord lace loops
- webbing loop for clipping options
- contoured EVA insole

PRODUCT DESCRIPTION

An outdoor shoe that keeps a casual look but is built for more than just asphalt. The newly developed Rafiki outsole is inspired by climbing holds and, combined with sticky rubber, provides confident footing on rock, dirt, or in the city. With a 3 mm tread, it can handle even slightly broken terrain. The durable leather upper can take a beating—unlike the skin on your hands—and as a bonus, it holds its shape even with frequent use. Toe and heel protection extend the shoe's lifespan, while extended lacing all the way to the toe lets you fine-tune the fit—looser for approaches, tighter for more technical sections. A climbing zone in the toe ensures more precise foot placement and better support on smaller footholds, especially useful during approaches or light scrambling. An 8 mm drop keeps your foot in a comfortable position even during long wear, making the shoe work just as well for city walks as for quick escapes to the crag.



sea foam/holiday
10072864RFX





TERRA

ALL YEAR

NATURAL MOTION TRAIL SHOE

DESCRIPTION

UPPER: 90% high elasticity polyester 10% nylon
OUTSOLE: sticky rubber

- durable
- breathable

INFO

fit: wide
size: 42-47

SIZE 42:
weight: 245 g (one shoe)
insole length (MP): 27,3 cm
drop: 0 mm

FEATURES

- breathable engineered knit
- extended close to toe lacing
- paracord lace loops
- TPU mud guard
- padded heel support
- paracord loop for clipping options
- optimal traction
- PU insole

PRODUCT DESCRIPTION

A lightweight outdoor shoe designed for active movement in the terrain and everyday use around the crag. The wider last allows natural toe splay and better stability with every step. The shoe is built on a zero-drop platform, but with the added PU insole the resulting drop is 3 mm. This means a more natural foot position without overloading your calves—a functional compromise between a barefoot approach and all-day comfort. Suffering in climbing shoes is enough, you don't have to suffer in your everyday shoes too. The construction is soft, yet a TPU toe cap protects against contact with rock and rough terrain, while a reinforced heel and midfoot provide stability on uneven ground and when carrying weight. Suitable for light approaches, moving around the crag, or even multi-pitches—thanks to the heel loop, you can clip them to your harness.



black/volcanic
10072865RFX

color: black/volcanic

TERRA W

ALL YEAR

NATURAL MOTION TRAIL SHOE

DESCRIPTION

UPPER: 90% high elasticity polyester 10% nylon
OUTSOLE: sticky rubber

- durable
- breathable

INFO

fit: wide
size: 37-42

SIZE 42:
weight: 245 g (one shoe)
insole length (MP): 27,3 cm
drop: 0 mm

FEATURES

- breathable engineered knit
- extended close to toe lacing
- paracord lace loops
- TPU mud guard
- padded heel support
- paracord loop for clipping options
- optimal traction
- PU insole

PRODUCT DESCRIPTION

A lightweight outdoor shoe designed for active movement in the terrain and everyday use around the crag. The wider last allows natural toe splay and better stability with every step. The shoe is built on a zero-drop platform, but with the added PU insole the resulting drop is 3 mm. This means a more natural foot position without overloading your calves—a functional compromise between a barefoot approach and all-day comfort. Suffering in climbing shoes is enough, you don't have to suffer in your everyday shoes too. The construction is soft, yet a TPU toe cap protects against contact with rock and rough terrain, while a reinforced heel and midfoot provide stability on uneven ground and when carrying weight. Suitable for light approaches, moving around the crag, or even multi-pitches—thanks to the heel loop, you can clip them to your harness.



castlerock/grape
10072866RFX

color: castlerock/grape





SLASH

ALL YEAR

A VERSATILE CLIMBING SHOE DESIGNED FOR COMFORT AND PERFORMANCE IN THE GYM AND ON THE ROCK

DESCRIPTION

UPPER: synthetic leather, 100% polyester, rubber
 MIDSOLE: 1 mm medium – soft plastic
 OUTSOLE: Vibram XS 4mm
 PROFILE: curved
 ASYMETRY: high

INFO

fit: regular
 size: green envy [CW1]:
 41,5/ 42/ 42,5/ 43/
 43,5/ 44/ 44,5/ 45/
 45,5/ 46/ 46,5/ 47
 size: brown sugar [CW2]:
 37/ 37,5/ 38/38,5/ 39/
 39,5/ 40/ 40,5/ 41/
 41,5/ 42

FEATURES

- Velcro closure strap
- large toe patch
- split Vibram XS grip
- heel pull-on straps
- tongue pull strap
- hybrid sock construction
- tensioned heel rand
- medium-soft midsole
- breathable elastic mesh

SIZE 41:
 weight: 234 g (one shoe)
 insole length (MP): 28 cm

PRODUCT DESCRIPTION

Rafiki steps into the game with its own climbing shoe. And not just any shoe. This is a total banger built for bouldering and sport climbing both indoors and outdoors, where precision, sensitivity and confidence in every move matter. Made in the EU, Slash also reflects a high standard of craftsmanship and quality you can rely on. The asymmetrical shape with a moderate downturn gives you just the right amount of aggression for hard moves without sacrificing feel. Extended rubber coverage on the toe opens up new hooking possibilities and holds when things get interesting. The Vibram XS Grip outsole delivers optimal friction and reliable contact on both rock and plastic. The synthetic microfiber upper keeps its shape while staying comfortable even during longer sessions. The sock hybrid construction wraps your foot like a second skin, while the Velcro strap ensures quick and precise adjustment. A medium-soft midsole provides the perfect balance between support and sensitivity. Slash is built for climbers who want to push their limits and trust their shoes to keep up. Go for flash with Slash!



green envy
10074394RFX



brown sugar
10074395RFX



BOW FLAG

A CLASSIC ADVERTISING FLAG AVAILABLE IN SIZE "S" OR "L" IT INCLUDES PRINTED TEXTILE, FLAGPOLE AND STAND FOR INDOOR AND OUTDOOR USE.

INFO

size: "S": 55x200 cm
"L": 80x340 cm



BANNER

PVC BANNER WITH METAL MESH AROUND THE PERIMETER FOR MOUNTING.

INFO

size: 300x100 cm



CRASHPAD BENCH

WOODEN BENCH FOR CRASHPAD AND SMALLER CRASHPAD, MADE FOR LOUNGE AREAS, CLIMBING/BOULDERING WALLS AND AS A SEATING FOR THE SHOPS.

INFO

size bench: 100x100x85 cm
size crashpad: 100x140x10 cm



SEATING CUBE

CUBE MADE FROM HARD FOAM, WITH CANVAS OUTER LAYER, PRINTED WITH RAFIKI LOGO. PERFECT AS A SEAT FOR SHOPS OR CLIMBING WALLS.

INFO

size: 40x40x40 cm



LOGO STAND

POS-CARDBOARD DISPLAY STAND, TWO-SIDE PRINT, SUITABLE EVEN FOR SUSPENSIONS IN, E.G. SHOP WINDOWS.

INFO

size: 35 cm - circle diameter



CUBE

IMAGE PAPER CUBE, ALL SIDES WITH LOGO PRINT.

INFO

size: 35x35x35 cm



Price and minimum quantity of all promotional products are on request.

Price and minimum quantity of all promotional products are on request.

HANGERS

ORIGINAL SOLID WOODEN
RAFIKI HANGERS WITH NOTCHES.

INFO

size: 43 cm



STICKERS

TWO SETS OF RAFIKI STICKERS, 50 SHEETS PER
PACKAGE

INFO

size: 219x158 cm



NALGENE BOTTLE

THE ORIGINAL. THE TRAILBLAZER.
THE SIR EDMUND OF WATER BOTTLES.

INFO

size: 32 oz wide bottle
• durable
• screw top



NOTES



Price and minimum quantity of all promotional products are on request.

RAFIKI TEAM

Our ambassadors include experienced climbers as well as interesting personalities and promising young aces. Thanks to a long term cooperation with them and with the climbing community, we have a chance to get great insights, ideas for new products and most importantly valuable feedback for each of our new collections.

#RAFIKICLIMBING

The most prominent members of the team are: **Vojta Trojan**, a tireless rock climber with many 9a under his belt. **Stěpán Stráník**, who is constantly trying and inventing new difficult projects in the Moravian Karst. **Edita Vopatová**, a leading Czech rock climber. **Rob Denayer** one of the best Belgian boulderers, **Angelo Bonechi**, the pioneer of hard bouldering in Sardinia, **Klemen Bečan** a climbing legend from Slovenia or Spanish 8c climber **Núria Díaz** and many other excellent climbers.

#RAFIKITEAM

RAFIKI

SUPPORTS CZECH NATIONAL CLIMBING TEAM

We are proud supporters of Czech National Climbing team from the young talents to the famous names in the adult categories.

#RAFIKICLIMBING



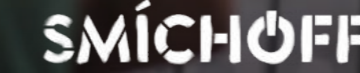
They compete in Rafiki apparel and give us valuable feedback and also confirmation that the clothes really work even on the highest level.



RAFIKI EVENTS

For a long time, we have been supporting exciting and often unique climbing events such as the Rafiki Water Boulder Games, the Rafiki Urban Boulder Race and other climbing competitions and festivals.

#RAFIKICLIMBING



HOW TO MEASURE

MEN

CHEST / Place the tape measure under the arms and around the fullest part of your chest with arms raised slightly.
WAIST / Measure all the way around your body, level with your belly button. Make sure it's not too tight and that it's straight, even at the back. Don't hold your breath while measuring.
HIPS / Put your feet together. Locate the correct area of your hips and measure the widest point around your buttocks. Hold the start of the tape measure on one hip, wrap it around your buttocks and around your other hip and then back to where you started.
INSEAM / Grab your favorite pair of pants. Measure the inseam starting at the crotch seam to the bottom of the pant leg.



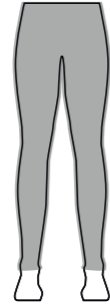
CHEST

WAIST

HIPS

INSEAM

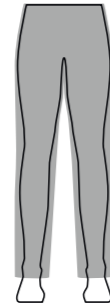
SLIM
Fits close to the body and form fitting.



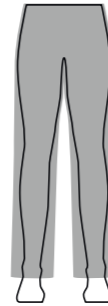
STRAIGHT
Straight cut through the body.



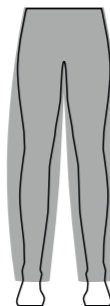
REGULAR
Traditional cut and fits looser around the body.



RELAXED
Roomy and comfortable. Drapes loosely on the body.



LOOSE
Relaxed, roomy cut for comfort and ease.



WOMEN

HOW TO MEASURE

CHEST / Place the tape measure under the arms and around the fullest part of your chest with arms raised slightly.
WAIST / Measure all the way around your body, level with your belly button. Make sure it's not too tight and that it's straight, even at the back. Don't hold your breath while measuring.
HIPS / Put your feet together. Locate the correct area of your hips and measure the widest point around your buttocks. Hold the start of the tape measure on one hip, wrap it around your buttocks and around your other hip and then back to where you started.
INSEAM / Grab your favorite pair of pants. Measure the inseam starting at the crotch seam to the bottom of the pant leg.



CHEST

WAIST

HIPS

INSEAM

MEN	XS 44	S 46	M 48	L 50	XL 52	XXL 54
CHEST	86-93	94-98	99-103	104-108	109-113	114-118
WAIST	73-77	78-82	83-87	88-92	93-97	98-102
HIPS	87-91	92-96	97-101	102-106	107-111	112-116
INSEAM	82-84	83-85	84-86	87-89	89-91	90-92

WOMEN	32 XXS	34 XS	36 S	38 M	40 L	42 XL	44 XXL
CHEST	77-80	81-84	85-88	89-92	93-96	97-100	100-103
WAIST	59-62	63-66	67-70	71-74	75-78	79-82	83-86
HIPS	85-88	89-92	93-96	97-101	102-105	106-109	110-113
INSEAM	76-79	78-81	80-83	82-85	84-87	86-89	88-90

KID	128 6-7 y	134 7-8 y	140 8-9 y	146 9-10 y	152 10-11 y
CHEST	64	66,5	69	71,5	74
WAIST	58	60,5	63	65,5	68
HIPS	70	72,5	75	77,5	80
INSEAM	56	60	64	67	71

The measurements are in centimetres.

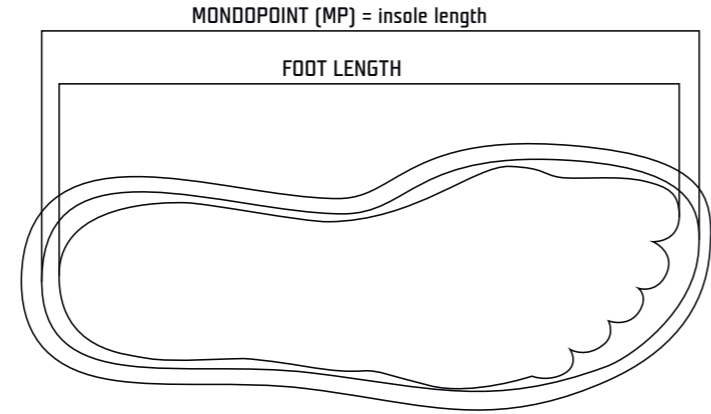
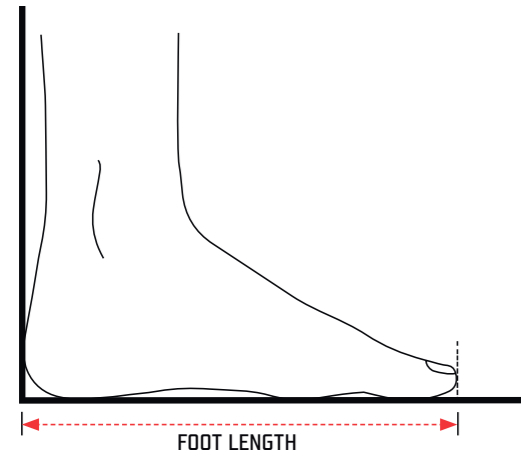
The measurements are only indicative, not dimensions of the garment (except for inseam, which is garment measurement) We recommend to try out our clothes personally.

HOW TO MEASURE

SHOE

Foot length / Stand flat-footed with your heel against a wall. Use a ruler or tape measure from the back of your heel to the tip of your longest toe. Expect that a shoe with an inner size that exactly matches the length of your foot will not be comfortable. You should add 7-12 mm to the length of your foot (depending on how tight you want the shoe to fit) and then choose the right size based on the resulting length.

Foot width / Measure the flat width across the ball of your foot (the widest point) by stepping on the ruler or tape measure.



MEN

EUR	41	42	43	44	45	46	47
UK	7	8	9	9,5	10,5	11	12
USA	8	9	10	10,5	11,5	12	13
MP	26,4 cm	27,1 cm	27,8 cm	28,4 cm	29,1 cm	29,8 cm	30,4 cm
foot width	9 cm	9,18 cm	9,36 cm	9,54 cm	9,72 cm	9,9 cm	10,08 cm

WOMEN

EUR	37	38	39	40	41	42
UK	4	5	5,5	6,5	7	8
USA	5	6	6,5	7,5	8	9
MP	23,8 cm	24,4 cm	25,1 cm	25,8 cm	26,4 cm	27,1 cm
foot width	8,28 cm	8,46 cm	8,64 cm	8,82 cm	9 cm	9,18 cm

Rafiki reserves the right to perform changes in the products presented in this workbook. Any part of this presentation cannot be reproduced without permission of Rafiki.

Photographers:

Jakub Cejpek, Klara Stein, Jan Novák, Lukáš Klingora, Pavel Nesvadba, Jakub Konečný, Petr Chodura, Lukáš Černý, Jan Haráč, Petr Andrla, Adam Mašík, David Hájek, Petra Šebestová, Kazushige Nakajima, Eduardo Ruano Lin, Jakub Zeman, Karolína Oliveriusová, Lukáš Bíba and Rafiki Urban Boulder Race photo archive, Outdoor Concept, a. s. archive.



#RAFIKICLIMBING

 www.rafikiclimbing.com

 Rafiki-climbing life

 rafikiclimbing

 Rafiki Climbing

Americká 54 | 301 00 Plzeň | Czech Republic | tel.: + 420 379 200 666 | office@rafiki.cz